

albert
Jagger

2023 - 2024

PRODUCT CATALOGUE



YOUR SAFETY DRIVES US



Tab Colour Code:	Page Number:	Section Contents:
	2	Contents Page
	3	About Us
	Parksafe On Demand	
	4 - 7	Why Choose Parksafe On Demand
	8 - 14	DVR's & Accessories
	15	Low Bridge Detection System (LBDS)
	16	Passenger Counter
	17 - 20	Ai Intelligent Pedestrian Detection & 360° Camera Systems
	21	Driver Monitoring System (DMS)
	22 - 23	WI-FI & 4G Routers
	24 - 29	Trackers & Accessories
	Commercial Vehicle Products	
	31 - 32	Sensor Detection Kits
	33 - 36	Audible Alarms & Warning Systems
	37 - 42	Compliant Systems (FORS, DVS & CLOCS)
	Cameras - Commercial, Brake Light & Universal Cameras	
	44 - 52	Cameras
	53 - 58	Brake Light Camera
	Dashboard & Mirror Monitors	
	60 - 63	Dashboard Monitors
	64 - 65	Mirror Monitors
	66 - 68	Adapters, Fixing Kits & Accessories
	69 - 73	Camera & Monitor Kits
	74 - 77	Camera Interfaces
	78 - 82	IROAD UK Dash Cameras - Kits & Accessories
	84 - 88	Parking Sensors & Accessories
	89 - 97	Power Inverters & Battery Chargers
	102	Warranties
	103	Back Page

YOUR SAFETY DRIVES US

ABOUT US



Working with some of the UK and Europe's largest fleets, Parksafe Group specialise in an extensive spectrum of vehicle and camera safety equipment. Supplying and manufacturing a comprehensive range of reliable, cost-effective and quality assured products for the whole of the automotive industry, for over 30 years.

Located in the heart of Derbyshire, our closely controlled design processes coupled with our in-house research and development expertise has allowed us to remain at the forefront of new product developments, and has helped us to establish ourselves as a leading automotive product supplier.

PARKSAFE ACCREDITATIONS



ALBERT JAGGER

Founded in 1887, Albert Jagger Limited are known for their innovation, excellent service and the highest quality products for vehicles of all types.

With over 130 years' experience in the transport hardware industry, they continue to grow a global network of distributors covering over 70 countries Worldwide. In order to manufacture and supply vehicle components to OEMs and aftermarkets, our global network of distributors is a vital extension of our UK based export division.



24/7
Technical Support



Extensive Range



Trusted Partner



Innovation



OEM Products



Value

YOUR SAFETY DRIVES US



ON DEMAND



The Parksafe On Demand LIVE Online portal provides INSTANT, ON DEMAND access to your entire fleet of vehicles 24/7.

The 'On Demand' web portal allows Fleet Managers to access information and reports instantly from virtually anywhere 24 hours a day, 7 days a week!

View **LIVE**, crystal clear HD footage, access remote video downloads, which allow you to track the vehicles location, and view historical footage for up to 60 days. You will be notified of real time events, our dedicated Parksafe On Demand platform will provide instant access to your fleets data 24/7 on virtually device.

COST EFFECTIVE TRACKING

From ONLY 29p per day, per vehicle our **PARKSAFE ON DEMAND** system can, on average, provide a return on investment in as little as 3 MONTHS!

KEY FEATURES:

- ✓ **LIVE** multi-camera views (1 to 12 cameras)
- ✓ **LIVE** location reports
- ✓ **BESPOKE** On Demand dashboard
- ✓ **QUICK & EASY** fleet reporting and analysis
- ✓ **VIEW** results and track your fleet LIVE from PC, Tablet or mobile phone
- ✓ **ADD** a telematics device - Monitor driver behaviour
- ✓ **250 LOCAL** engineers nationwide
- ✓ **FROM JUST 29p PER DAY!**



BOOK A FREE DEMO

CONTACT US today to take advantage of our **FREE DEMO OFFER** and see for yourself what **PARKSAFE ON DEMAND** can do for you.



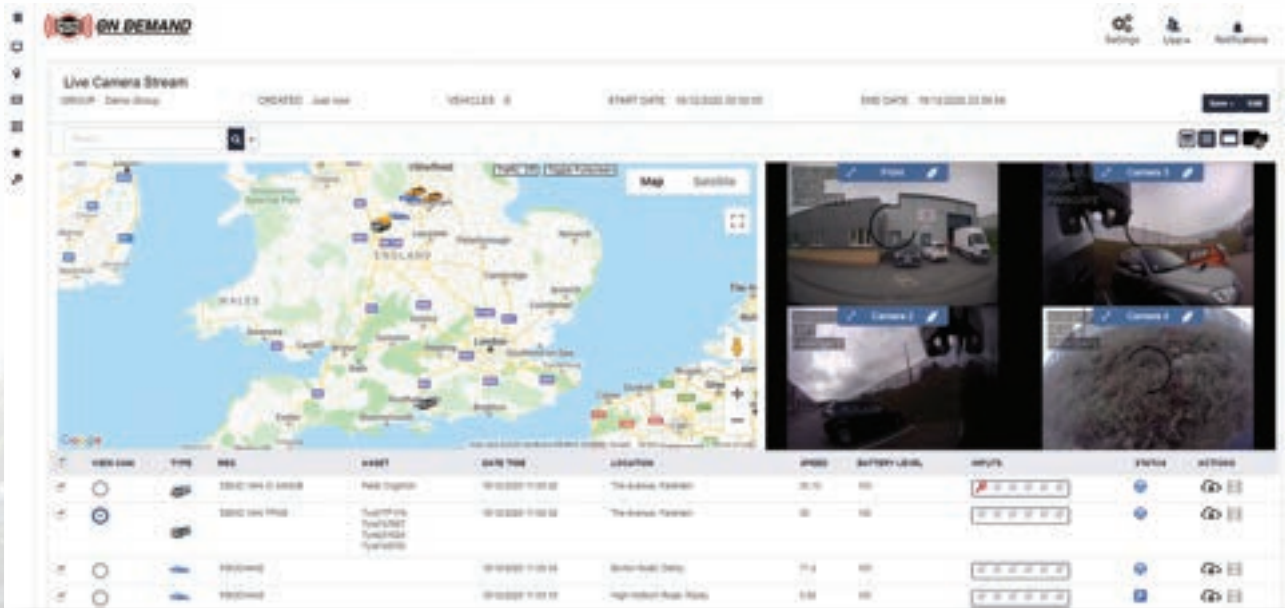
EASY DASHBOARD SET UP:

Users can bespoke set up their user dashboard view so only the reports needed are shown, making reviewing data quick and easy. The dashboard can show LIVE vehicle locations, Multi-camera views, Accident reports, Driver behaviour and much more...

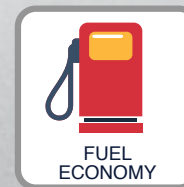


LIVE MULTI-CAMERA VIEWS & FLEET LOCATIONS:

View LIVE or recorded vehicle videos, locations and incident footage by date and time, footage can be stored for up to 60 days. View LIVE and recorded information on our superb web based platform, anytime.



SCAN THE QR CODE BELOW TO VIEW THE PARKSAFE ON DEMAND VIDEO



FEATURES & BENEFITS



FULL FLEET VISIBILITY:

View live and recorded video footage remotely 24/7. Monitor vehicle locations, fuel economy, speed, time driving and driver behaviour live from PC, tablet or mobile. Examine incident footage instantly and reviewed footage can be sent or used as evidence for insurance claims. LIVE ETA's can be given to customers who are expecting a delivery. Operators can run reports on driver risks, fuel economy, speed and journey statistics.



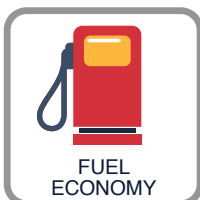
LIVE CAMERA VIEWS:

360° views around the vehicle and inside the cab footage available LIVE or as recorded data. Review journey, driver behaviour and manoeuvring footage to enable fault claims to be processed or to be given as examples for training purposes. Cameras are available in standard definition, AHD or Full HD options.



SAVE MONEY:

Parksafe On Demand offers fleet manager substantial cost savings on insurance premiums, vehicle damage, fuel economy, speeding fines, time off through driver injury and vehicle maintenance. Improving driver behaviour, monitoring driving styles and analysing risks taken ensures that the Parksafe On Demand data packages provide excellent cost saving, reliable data and in turn safer drivers.



IMPROVE FUEL ECONOMY:

Fleet fuel economy can be improved through reducing rapid acceleration, braking and the amount of time the vehicle is idling. The Parksafe On Demand platform can educate drivers by determining how much fuel has been wasted as a monetary value while idling based on the current price of fuel.

MANAGE YOUR FLEET REMOTELY FROM ANYWHERE!

FEATURES & BENEFITS



DRIVER BEHAVIOUR:

Efficient, safe driving saves money on insurance premiums, vehicle repair and maintenance. **Parksafe On Demand** allows fleet managers to monitor their fleet and the behaviour of drivers to identify where costs can be reduced through reducing accidents, insurance claims, maintenance costs, risks taken and improving fuel economy. Where issues occur training can be provided to ensure that the drivers are aware where improvements can be made.

View driver behaviour remotely such as speeding, harsh braking and incident notifications. Driver behaviour reports can be used as evidence to improve safety, efficiency and also be used for training purposes.



FASTER UPLOADS

Multi network SIMS means increased data coverage and faster download speeds across UK and Europe.



LIVE LOOK UP

Parksafe On Demand offers Live look up technology allows you to play back video footage on the SSD to find valuable footage quickly and efficiently. Using up to 99% less data and 10 x quicker than traditional download features.



VEHICLE CHECK APP:

The **Parksafe On Demand** platform supports the Vehicle Check App. Live vehicle checks ensure that responsibility is taken for the condition of the vehicle throughout the drivers shift. If an accident occurs a live alert is registered on the Parksafe On Demand platform, details of the incident can be easily logged via the app and assistance can be accessed 24/7.



REMOTE MONITORED SERVICE

By signing up for our fully monitored service our customer service agents and engineers will keep your vehicle in fully working order quickly and efficiently.

MANAGE YOUR FLEET REMOTELY FROM ANYWHERE!

MANAGE YOUR ENTIRE FLEET WITH...
PARKSAFE ON DEMAND *LIVE* DVR'S



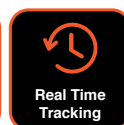
BENEFITS OF LIVE DVR KITS ON THE PARKSAFE ON DEMAND PLATFORM

- ✓ Remote, Real Time access to data 24/7 via the Parksafe On Demand portal.
- ✓ Playback of LIVE or Recorded video.
- ✓ Scheduled, Automatic & Manual Downloads via 4G Wi-Fi.
- ✓ Bespoke Reporting Dashboard.
- ✓ Stream up to 12 Cameras.
- ✓ View **ALL** Fleet Vehicle Locations on One Map.
- ✓ Remote Tachograph Tracking Reports.
- ✓ Alerts for Accidents, Driver Behaviour, Over-Speeding, Geo-Fencing & G-Force
- ✓ Driver behaviour: Fuel consumption, Speeding, Risk Taking & Excessive Braking
- ✓ Health check on: SSD Error, Video Loss

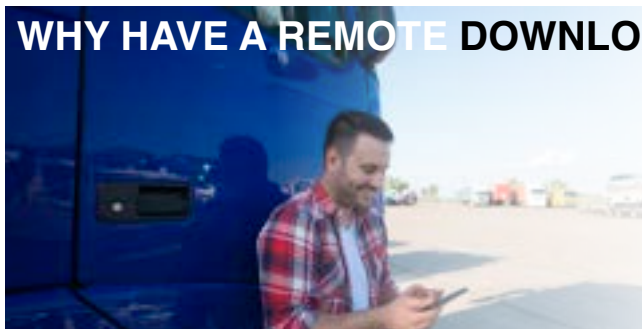
Go LIVE with Parksafe On Demand

The Parksafe On Demand portal provides instant On Demand access to all your vehicles. Parksafe On Demand allows users to remotely view LIVE footage, download historical footage, Tacho data, vehicle health reports & driver behaviour using the Parksafe On Demand range of DVR kits and tracking devices.

Access LIVE fleet locations, fuel economy reports, driver behaviour reports and much more, bespoke to you and available 24/7 via PC, tablet or mobile.



WHY HAVE A REMOTE DOWNLOAD SET UP?



- ✓ **CONNECT REMOTELY** to monitor & download data
- ✓ **EVIDENCE** against insurance claims
- ✓ **PEACE OF MIND** for drivers and fleet managers
- ✓ **TRACK YOUR VEHICLES** speed and location
- ✓ **SAFER DRIVERS** - Less Accidents & Personal Injury so less time off the road!

SPLIT THE COST *SUBSCRIPTION PACKAGES AVAILABLE*:*

- ✓ Pay Monthly or Yearly.
- ✓ 12, 24 OR 36 MONTH Contracts Available.
- ✓ 1GB, 3GB or 5GB Data Packages Available.
- ✓ Multi Network SIMS
- ✓ Finance Options Available.

*Terms and Conditions apply, subject to availability and qualifying criteria. Prices may rise during contract.

MANAGE YOUR ENTIRE FLEET WITH...

PARKSAFE ON DEMAND LIVE DVR'S

LIVE 5 Channel MDVR (4CH + 1CH IP) with Wi-Fi, 4G & GPS

The Parksafe Premium DVR's are all compatible with SSD (Solid State Drives) and the option to have a SD card to back-up your footage. Footage can be retrieved manually or via 4G / Wi-Fi. This will give you high quality, crystal clear vision of your vehicles. Allowing you to reduce blind spots and put your fleets safety first. The Parksafe On Demand platform will provide instant access to your vehicles.

Specification:

- Power Input: 10 ~ 32V DC
- Power Output: 12V @ 3.5A
- Operating system: Linux
- Supports: 1080p 8 Channel (4CH + 1CH IP standard)
- Supports up to 2TB (SSD) & SD card (x 1 128GB)
- 4G, Wi-Fi, & GPS
- Built in G-Sensor
- Video standard: PAL - 25fps; NTSC -30fps
- NTSC / PAL Auto Format
- Data Self Protection
- D1, AHD & FHD Auto Compatibility
- Waterproof: IP69K
- Max Power Consumption: 60W; Standby: 100mW
- Audio Input: 4 channels
- Audio Output: 1 channel
- 4*1080p (1920*1080)
- 4 Channel Custom Alarm Recording, Panic Button Trigger Recording
- Operating Temperature: -20°C ~ +70°C
- Delayed shutdown
- Shockproof
- Auto Set Up: Time & Date
- Lockable Case
- Password Protected
- **Dimensions:** 16cm (L) x 12cm (W) x 3.5cm (D)



PSOD005-LIVE



Use this product with our web based reporting platform



LIVE 12 Channel MDVR (8CH + 4CH IP) with Wi-Fi, 4G & GPS

The Intelligent Waterproof 8CH HD MDVR All-in-One Device adopts H.264/H.265 compression technology and supports real time remote monitoring, which makes fleet monitoring more efficient. It can be combined with ADAS and DMS, Blind Spot Monitoring or 360° Birds-Eye which allows the driver to have a safer drive without spending extra money on separate installations.

Specification:

- Power Input: 10 ~ 32V DC
- Operating System: Linux
- Max 60W; Standby 100mW
- Operating Interface: Graphical menu operation interface (OSD)
- CVBS Output: 1ch 6pin Aviation Connector
- VGA Output: 1ch VGA output, 1080p
- Video Standard: PAL:25fps / NTSC:30fps
- NTSC / PAL Auto Format
- Compression: H.264 Main Compression
- Audio Input: 8 Channels
- Audio Output: 2 Channels
- Record Format: Synchronized Video & Audio recording
- Audio Compression: ADPCM
- Image Resolution: 8*1080p (1920 x 1080p)
- Image Resolution: 1 ~ 8 Level adjustable
- Video Bit Rate: 128kbps ~ 6Mbps / Channel
- Storage: 56 ~ 1800MB (Channel / Hour)
- Playback Resolution: 8*720p or 4*1080p (Encoding & Decoding at the same time)
- Audio Bit Rate: 32kbps
- Storage: 2.5" SATA SSD x 1, Max 2 TB; SD Card x 1, Max 128GB
- Alarm Input: 6 Channels
- Alarm Output: 2 Channels
- Motion Detection: High / Middle Low Sensitivity, Adjustable
- **Dimensions:** 16cm (L) x 12cm (W) x 3.5cm (D)



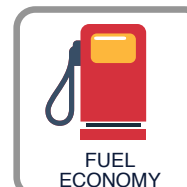
PSOD008-LIVE



Use this product with our web based reporting platform



*Terms and Conditions apply, subject to availability and qualifying criteria. Prices may rise during contract.



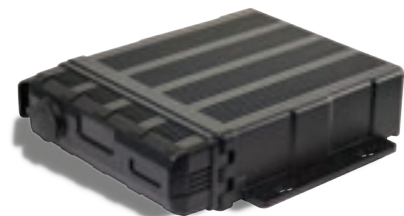
PARKSAFE ON DEMAND **WI-FI** DVR'S

WHY DO YOU NEED A MDVR CAMERA SYSTEM...



The Parksafe Premium DVR's are all compatible with SSD (Solid State Drives) and the option to have a SD card to back-up your footage.. Footage can be retrieved manually or via Wi-Fi. This will give you high quality, crystal clear vision of your vehicles. Allowing you to reduce blind spots and put your fleets safety first!

- ✓ **DOWNLOAD** Data Manually or via Wi-Fi
- ✓ **EVIDENCE** against insurance claims
- ✓ **PEACE OF MIND** for Drivers and Fleet Managers
- ✓ **BUILT IN GPS** via Google to record Location & Speed
- ✓ **PREVENT** Accidents and Personal Injury
- ✓ **MANOEUVRE** Safely
- ✓ **ENHANCED** Blind Spot Vision



Key Features of Parksafe On Demand Wi-Fi DVRs:

- ✓ Upgrade from 8 to 12 Channels with our control module
- ✓ Supports up to 2TB (SSD) & SD card (1 x 128GB)
- ✓ Wi-Fi
- ✓ Waterproof: IP69K & shockproof
- ✓ Records frame rates up to 28FPS
- ✓ Built in G-Sensor
- ✓ Data self protection, password protection & Lockable case
- ✓ Voltage: 12/24V
- ✓ Auto set up - Time & Date
- ✓ Built in super capacitor

Parksafe On Demand Wi-Fi DVR Range:	
Code:	Description:
PSOD005	5 Channel DVR (4 + 1 IP or 4 IP Channel) with Wi-Fi, GPS
PSOD008	12 Channel DVR (8 + 4 IP Channels) with Wi-Fi, GPS

PARKSAFE ON DEMAND **WI-FI** DVR'S

5 Channel MDVR (4CH + 1CH IP) with Wi-Fi & GPS

The Parksafe Premium DVR's are all compatible with SSD (Solid State Drives) and the option to have a SD card to back-up your footage. Footage can be retrieved manually or via Wi-Fi. This will give you high quality, crystal clear vision of your vehicles. Allowing you to reduce blind spots and put your fleets safety first.

Specification:

- Power Input: 10 ~ 32V DC
- Power Output: 12V @ 3.5A
- Operating System: Linux
- Supports: 1080p 5 Channel (4CH + 1CH IP standard)
- Supports up to 2TB (SSD) & SD card (x 1 128GB)
- Wi-Fi & GPS
- Built in G-Sensor
- Video standard: PAL - 25fps; NTSC - 30fps
- NTSC / PAL Auto Format
- Data Self Protection
- D1, AHD & FHD Auto Compatibility
- Waterproof: IP69K
- Max Power Consumption: 60W; Standby: 100mW
- Audio Input: 4 channels
- Audio Output: 1 channel
- 4*1080p (1920*1080)
- 4 Channel Custom Alarm Recording, Panic Button Trigger Recording
- Operating Temperature: -20°C ~ +70°C
- Delayed shutdown
- Shockproof
- Auto Set Up: Time & Date
- Lockable Case
- Password Protected
- **Approvals & Certifications:** E Mark, CE, UKCA



PSOD005



Use this product with our web based reporting platform



12 Channel MDVR (8CH + 4CH IP) with Wi-Fi & GPS

The Parksafe Premium DVR's are all compatible with SSD (Solid State Drives) and the option to have a SD card to back-up your footage. Footage can be retrieved manually or via Wi-Fi. This will give you high quality, crystal clear vision of your vehicles. Allowing you to reduce blind spots and put your fleets safety first.

Specification:

- Power Input: 10 ~ 32V DC
- Power Output: 12V @ 3.5A
- Operating System: Linux
- Supports 1080p 8 Channel (8CH + 1CH IP standard)
- Upgrade to 12 Channels with our control module
- Supports up to 2TB (SSD) & SD card (x 1 128GB)
- Wi-Fi & GPS
- Built in G-Sensor
- Video standard: PAL - 25fps; NTSC - 30fps
- NTSC / PAL Auto Format
- Data Self Protection
- D1, AHD & FHD Auto Compatibility
- Waterproof: IP69K
- Max Power Consumption: 60W; Standby: 100mW
- Audio Input: 6 channels
- Audio Output: 2 channel
- 4*1080p (1920*1080)
- 4 Channel Custom Alarm Recording, Panic Button Trigger Recording
- Operating Temperature: -20°C ~ +70°C
- Delayed Shutdown
- Shockproof
- Auto Set Up: Time & Date
- Lockable Case
- Password Protected
- **Approvals & Certifications:** E Mark, CE, UKCA



PSOD008



Use this product with our web based reporting platform



4G DASH CAMERA DVR

WITH 4 CHANNELS & BUILT-IN TELEMATICS...

The **Parksafe On Demand 4G Dash Camera DVR** delivers a connected video solution with integrated telematics to suit most applications. In the event of a collision or driver panic activation, footage is automatically uploaded to the **Parksafe On Demand Dashboard**, notifying fleet operators within seconds of an event occurring.

Designed to support multiple camera configurations, the **Parksafe On Demand 4G Dash Camera DVR** allows up to four cameras to be connected and an external monitor to act as a manoeuvring or parking aid that is linked to indicator and reverse gear triggers. You will be able to **LIVE** stream the cameras and vehicle location via the **Parksafe On Demand Dashboard**, providing total visibility so whatever your operation, we have every angle covered.

You also get FNOL (First notification of loss) on the device, this will **automatically** send a 20 second clip and attach a PDF, allowing you to download the footage in 1 minute segments. Enabling you to Live Stream or login to view **LIVE** footage.



PSODDVR4C-LIVE

Please note: Cameras **NOT** Included, pick & choose your cameras to meet your requirements.

4G Dash Camera with built in FNOL Telematics

Specification:

- Full HD 720p OR 1080p
- H.265 30 FPS
- Input: 4 Channels
- Output: 1 Channel
- Image format: 720p/1080p
- Internal storage 64GB SSD
- External storage: SD Card Up to 128GB
- Alarm IO: 3 triggers
- Built in Telematics - Tracking & Driver Behaviour
- FNOL (First Notification of loss) or/and live camera stream
- Dimensions: 102mm x 114mm x 66mm



FULL FLEET VISIBILITY



INSTANT CRASH NOTIFICATION



DRIVER PROTECTION



DRIVER IMPROVEMENT



LIVE ACCESS 24/7



1080p FULL HD

INCLUDES: 64GB SD Card



PSOD002

2 Channel Recording 4G Dash Camera

Our 4G connected 2 Channel Dash Camera is the perfect solution for those people who do not require a full DVR installation but would like the connectivity, recording and tracking that it gives With 1080P Front and Driver facing cameras the unit records in clear detail and with two max 256GB Micro SD Cards, incident recording is fully covered.

Specification:

- Front Camera: 1080P, 120° Lens
- Driver Facing Camera: 1080P, 130° Lens
- GPS, 4G, Wi-Fi: Built in Modules & Antennas
- Storage: Max 2 x 256GB Micro SD Cards
- Compression: H.265
- Tamper-proof SIM & SD Card slot cover



DVR ACCESSORIES

Panic Button for 4 / 5 Channel MDVR



This LED panel with panic button is used to show the mobile DVR working status. If any of the LED's flash it will indicate the corresponding status.

Code:	Description:
DVRPAN4	Panic button for use with 4 / 5 channel DVR's.

4 Way Splitter Box Add 4 additional IP cameras



4-Channel Switch Box connects monitor with single video input to a maximum of 4 IP cameras. There are 4 cameras inputs and 1 AV output. It provides power for cameras and auto switches to the working channel when trigger wire is activated. Manual channel selection.

Code:	Description:
PSODIPX4	Add four additional IP cameras to your DVR system.

4 Pin Intelligent Switcher



Automatically detects connection of a second camera on the rear of the tractor and automatically switches the view. Ideal for increasing artic safety!

Code:	Description:
PSSWITCH	4 Pin Intelligent Switcher

Camera Switcher Module (D1, AHD, FHD Compatible)



The Parksafe AV Switcher Unit allows you to connect 2 different cameras into a screen or DVR via 1 input. This allows you to trigger separately or split the image.

Code:	Description:
PSHDSWITCHER	Camera Switcher Module

1TB Solid State Hard Drive



Every time you turn on your MDVR, you're using your storage drive. It holds all your required files and it loads and saves almost everything your system does. Get the near-instant performance and lasting reliability that comes with solid state storage.

Code:	Description:
SSD960	1TB Solid State Hard Drive

2TB Solid State Hard Drive



HDD records using a physical moving disk within the unit. When put into the vehicle with a constant vibration failure of the HDD can drastically increase, even though the MDVR is shockproof and has Anti- Vibration.

Code:	Description:
HD2TB	2TB Solid State Hard Drive

VIEW OUR FULL RANGE AT: WWW.PARKSAFEGROUP.COM OR CALL US TODAY!

PARKSAFE BESPOKE DVR & CAMERA KITS

Parksafe can tailor make bespoke DVR kits to suit your requirements and your budget. Our DVR and camera kits offer single camera to 12 camera kits in D1, AHD or Full HD options. DVRs are available in LIVE 4G or Wi-Fi options to allow manual or remote retrieval of data through our data packages used with the **Parksafe On Demand** reporting platform.

If you are looking to add vehicle tracking to your fleet we offer a comprehensive range of tracking products, that integrate seamlessly, with our DVR camera kits and the Parksafe On Demand reporting platform. Our 4G DVR camera kits, when used with our **Parksafe On Demand** platform ensure that your whole Fleet is visible from virtually any device 24/7.

Parksafe DVR camera kits are supplied with all the cabling needed for fitting and storage options and include Solid State Drives (SSD) giving you total flexibility.

5 CHANNEL - DVR KITS



5 Channel DVR Kit		
Code:	Description:	QTY:
PSOD005	5 channel MDVR (Wi-Fi & GPS)	1
SSD960	1TB Solid State Drive	1
PS027	7" Dashboard Monitor	1
FHDFRONT.1	IP Full HD 1080p Front Camera	1
FHDREAR.1	Full HD 1080p Rear Heavy Duty Camera	1
PSC162FHDM	Full HD 1080p Side Camera Right & Left	2
FHDDOME.1	Full HD 1080p Dome Camera	1

8 CHANNEL - DVR KITS



8 Channel DVR Kit		
Code:	Description:	QTY:
PSOD008	8 channel MDVR (Wi-Fi & GPS)	1
SSD960	SSD 1TB	1
PS027	7" Dashboard Monitor	1
FHDFRONT.1	Full HD 1080p Front Camera	1
FHDREAR.1	Full HD 1080p Rear Heavy Duty Camera	2
PSC162F-HDM	Full HD 1080p Side Camera Right & Left	3
FHDDOME.1	Full HD 1080p Dome Camera	2

BESPOKE SOLUTIONS.. TAILORED TO YOU..

With our extensive industry knowledge of over 30+ years we understand the challenges that you can be faced with. Here at **Parksafe Group** we take a pro-active approach, working closely with OEM and OES to create bespoke, high-quality solutions to suit your needs.

No matter how complex the problem is, we will work with you to bespoke a solution to fulfil your requirements.

TO DISCUSS YOUR REQUIREMENTS FURTHER

Please call us on: **01773 746 591**





BRIDGE DETECTION (LBDS)

Every year large vehicles collide with overhead bridges, research by Network Rail has found that 56% of drivers do not consider low bridges when planning their journey. As a result, these collisions endanger lives and cause disastrous delays on the road and rail networks.


Data published by Network Rail between 1st April 2020 and 31st March 2021 shows that there were 1,624 bridge strikes reported across the network. Most of these incidents involved Heavy Goods Vehicles (HGV's), with between 40 - 50 a year related to buses.


Costly bridge strikes can be avoided by alerting overheight vehicles on their approach, our unique and innovative Parksafe Group **Low Bridge Detection System (LBDS)** is the ideal solution! Designed and manufactured in the UK, the LBDS can detect up to 3,750 low bridges and requires ZERO driver input; the driver doesn't need to know the height or width of the vehicle, as this is all done at installation! By detecting upcoming low bridges, our innovative


LBDS uses GPS vehicle location data and intelligent geo-fencing to warn the driver via LED-enhanced alerts and an audible warning system that automatically activates and can help to significantly prevent disastrous collisions at low bridges throughout the UK.


Our revolutionary LBDS can be used as a stand-alone product, integrated into the vehicles cigarette lighter – simply plug in, and drive. Or it can be linked to our live **Parksafe On Demand** online platform which provides instant, remote alerts and on demand access to your entire fleet of vehicles 24/7.





- 

MADE IN BRITAIN
- 

DETECTS BRIDGES IN UK & IRELAND
- 

VISUAL LED WARNING SYSTEM
- 

AUDIBLE WARNING SYSTEM
- 

MULTIPLE WARNING ALERTS
- 

RADIUS: 300m² ALERT ZONE



PASSENGER COUNTER

Available as part of our Parksafe On Demand platform, this easily-installed solution accurately records boarding and alighting data, enabling public transport operators to determine optimum vehicle scheduling based on passenger load.

Our Passenger Counter Solution provides real-time and historical passenger data, as well as accurately monitoring passenger trends, boarding and disembarking locations and times allowing companies to swiftly adapt to demand.

The system can be connected to a mobile DVR allowing for further analysis and the creation of action points in real-time. By analysing transit use patterns and linking boarding and alighting data with stop or

station location, companies can optimally adapt vehicle types to meet actual demand.

Highly accurate over-door sensors capture on/off and counts each time vehicle doors open and close, and are smart enough to recognise when multiple doors are open and passengers are crossing doorways in both directions.

When connected through our intelligent Parksafe on Demand gateway – our Passenger Counter application collects and analyses this data easy and there is quick access to real-time occupancy data and detailed reporting functions.



INTELLIGENT PEDESTRIAN DETECTION CAMERA SYSTEM



THE NEXT GENERATION OF **BLIND SPOT DETECTION**

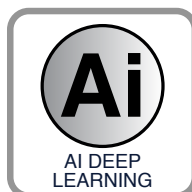
Vulnerable road users continue to be most at risk on UK roads with pedestrians, cyclists and motorcyclists making up an astonishing 81% of ALL people killed or seriously injured in 2021. Statistics from the Department of Transport also show that since 2004 cyclists' traffic has increased by 62%.

With an increase in HGVs alongside a surge in vulnerable road users, it is essential that organisations continuously review what they do to prevent potentially disastrous accidents and incidents to protect both the general public and drivers.

Thankfully, Parksafe Groups **Ai Intelligent Pedestrian Detection System** supports drivers in detecting and ultimately protecting vulnerable road users by eliminating blind spots and cleverly detecting objects

near the vehicle. When an object is detected, drivers will be alerted with audible and visual warnings. Drivers are given clear distances by measurement and colour codes (**red**, **amber**, and **green**) which are displayed on the cab monitor. This provides more reaction time for the driver and allow them to make a decision based on the colour, thereby giving the driver more awareness and confidence in congested areas.

The Pedestrian Detection camera can be used as a single camera or with a multi-camera system and is ideal for use on coaches, HGVs, and plant vehicles. **The Ai Detection System** can also be fully integrated with **Parksafe's On Demand** website platform, which gives Fleet Managers the ability to remotely view live pictures, download footage and remotely track the vehicle's location.



Ai 360° Full HD Pedestrian Detection System

Parksafe Groups 360° Full HD Birdseye View and Ai Intelligent Pedestrian Detection Safety System provides an excellent 360° birds-eye view, protecting vulnerable road users and drivers by eliminating blind spots and detecting pedestrians near the vehicle. It is BY FAR the best choice to assist vehicle drivers for HGVs, buses, coaches and Emergency Services Vehicles.

Camera Specifications:

- Viewing Angle Bird View: 170° (Horizontal)
- Resolution: 1920 x 1080P
- Frame Rate: 25 **OR** 30fps
- Waterproof Rating: IP69K
- Video Output: (1.0Vp-p, 75Ohm)
- Operating Temperature: -20 ~ + 70°C
- Storage temperature: -30 ~ +8 0°C
- Vibration Resistance: 5.9G

Image Processing Unit:

- Voltage: 10 ~ 32V DC
- PAL / NTSC Switchable
- Supports: SD Card, Max 2 x 512GB
- Connection: 4 Pin
- Resolution: 1920 x 1080p
- Triggers: 1-CH Backward Line, 1-CH Turn Left, 1-CH Turn Right, 1-CH Reverse and 1-CH Reverse Signal Trigger
- Power Consumption: <2A
- Operating Temperature: -40°C ~ 85°C



PS360PDS



Pedestrian Detection Camera & Monitor Kit

Our new AI Intelligent Pedestrian Detection system eliminates blind spots and cleverly detects pedestrians, providing driver's with audible & visual warnings of pedestrians or cyclists on the road. This gives the driver clear distances by measurement and colour codes (**red**, **amber** & **green**) which are displayed on the cab monitor.

The Pedestrian Detection camera can be used as a single camera or with a multi camera system, allowing the camera to be used on the side of the vehicle. Ideal for use on Coaches, HGV's and Plant vehicles.

The AI Detection system can be fully integrated with our Parksafe On Demand Website platform, this allows you to have the ability to remotely view LIVE footage, DOWNLOAD footage remotely AND TRACK your vehicles location.



PSDETECT-KIT

Use this product with our web based reporting platform



Intelligent Pedestrian Detection Camera

This Pedestrian & Vehicle Detecting Camera, with AI technology, can detect pedestrians, cyclists and vehicles at the front, side and rear of the vehicle, and provide real-time visual and audio alarm to remind drivers of potential dangers. It is regarded as a safer ECE R151 commercial vehicle product, which effectively improves driving safety

Specification:

- Voltage: 10V ~ 32V DC
- Video Output AHD (1.0Vp-p, 75Ohm)
- Viewing Angle Bird view: 170° **OR** 140° (Horizontal)
- Resolution 1920 x 1080P
- Frame Rate 25 or 30fps
- Waterproof Rating IP69K
- Audio Output Yes
- Communication Interface USB 2.0 (For Software upgrading)
- Cable Length 3M & 15M
- Power Dissipation: (12V IN) 320mA (IR off)
- Operating Temperature -20°C ~ +70°C
- Storage temperature: -30°C ~ +80°C
- Vibration Resistance: 5.9G (ISO 16750-3)
- Image mode: Mirror / Normal
- Dimensions: 95mm x 60mm x 70mm



PSDETECTCAM

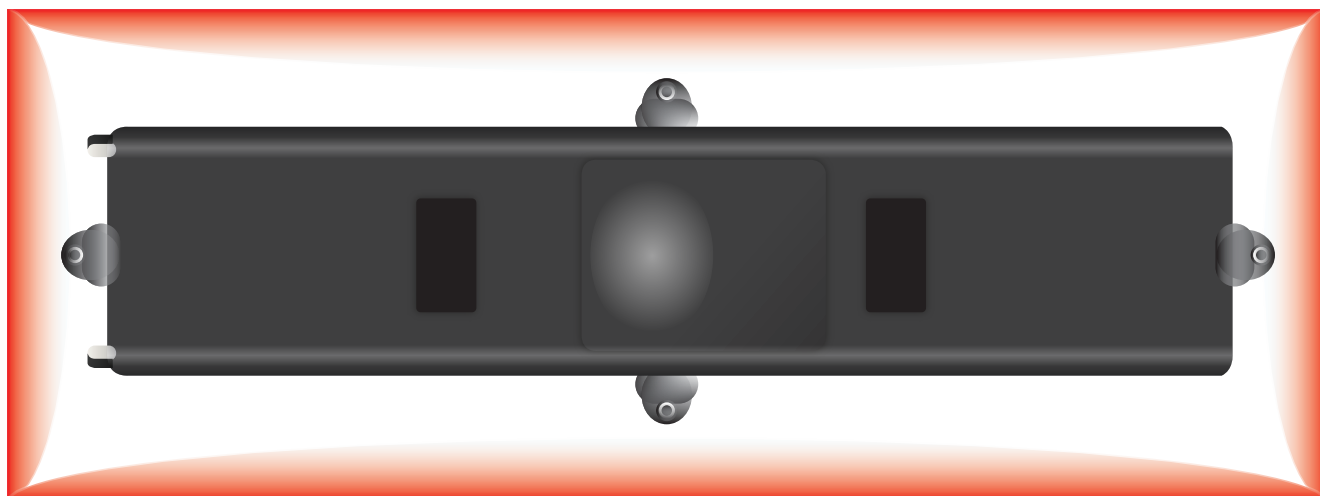


Code:	Description:
PSDETECT-CAM	170 FHD Pedestrian Detection Camera Without Buzzer
PSDETECT-CAMBUZZ	170 FHD Pedestrian Detection Camera With Buzzer
PSDETECT-CAM140	140 FHD Pedestrian Detection Camera Without Buzzer
PSDETECT-CAM140BUZZ	140 FHD Pedestrian Detection Camera With Buzzer

PLEASE NOTE: Requires PSDETECT-PROG reusable programming device with Wi-Fi set up and calibration.

DOWNWARD VIEW SIDE DETECTION RANGE = 3m x 6m at 140° OR 170°

360° BIRDS-EYE SAFETY SYSTEMS



LIVE 360° VIEWS ALL AROUND YOUR VEHICLE

Our 360° Camera System consists of FOUR ultra wide angle 1080p HD cameras which are mounted to each side of the vehicle. The crystal clear camera images are cleverly stitched together, resulting in a LIVE 360°, birds eye view all around the vehicle.

With a conventional four camera set up, hazards can still be missed due to the cameras fixed viewing angle, obstructed views by the vehicles bodywork and by having to focus on one of four different views on the monitor. The limitations of a standard four camera system can make manoeuvring the vehicle significantly more difficult in built up areas and blind spots present a high level of danger for both the driver and pedestrians.



ALL ANGLES COVERED:



FULL 360° VIEW around the vehicle shown from above.



PLUS options to view Left, Right, Front or Rear cameras at the same time.



360° Full HD Birdseye View Safety Camera System

The PS360FHD 360° camera system seamlessly stitches the images from four FHD cameras together, to show a full 360° view around the vehicle shown from above.

Camera Specifications:

- Voltage: 12V DC
- IP Rating: IP69K
- Frame Rate: 25 / 30fps
- Night vision: 3-5m <0.1 lux
- Mounting Methods: Bolted
- Connection: 4 Pin
- Resolution: 1080p x 720p
- Cable Lengths: 20M
- Power Consumption: <140mA

Image Processing Unit:

- Voltage: 10 ~ 32V DC
- Viewing Angle: Horizontal >190° Vertical >130°
- PAL / NTSC Switchable
- Supports 2 x SD Cards 128GB
- Connection: 4 Pin
- Resolution: 1080p x 720p
- Triggers: 1-CH Backward Line, 1-CH Turn Left, 1-CH Turn Right, 1-CH Reverse and 1-CH Reverse Signal Trigger
- Power Consumption: <2A
- Operating Temperature: -20°C ~ 70°C



- Calibration mats are required use **PS360C.1**
- A monitor is required use **PS035** or **PS045T**

7" HD Touch Screen Monitor (for use with the 360° camera system)

The PS046T HD universal dash mount Touch Screen monitor is for use with the 360° camera system.

Specifications:

- Voltage: 10 ~ 32V DC
- Resolution: 1024 x 3 (RGB) x 600
- Screen Size: 7" Colour
- Touch Screen: Yes
- Fixings: Fan & U bracket
- Split Screen: 1/4

Code:	Description:
PS046T	7" HD Touch Screen Monitor

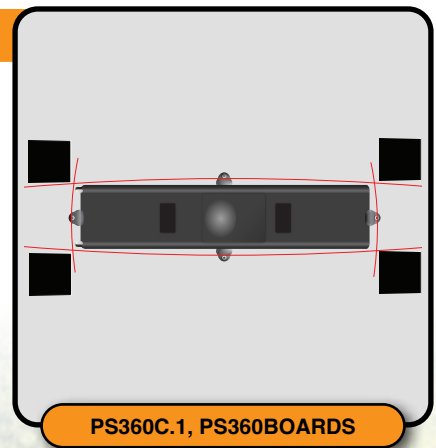


Calibration Mats

Our Calibration Mats allow you to quickly stitch together the 4 Full HD 1080p cameras efficiently, to create one crystal clear image! By placing the mats in the desired location it will auto-calibrate our 360° Camera System.

Choose either the Fabric Mats, or Foldable Board type.

Code:	Description:
PS360C.1	4 x Calibration Fabric Mats for use with the PS360FHD Camera System
PS360BOARDS	4 x 5mm Boards for use with the PS360FHD Camera System

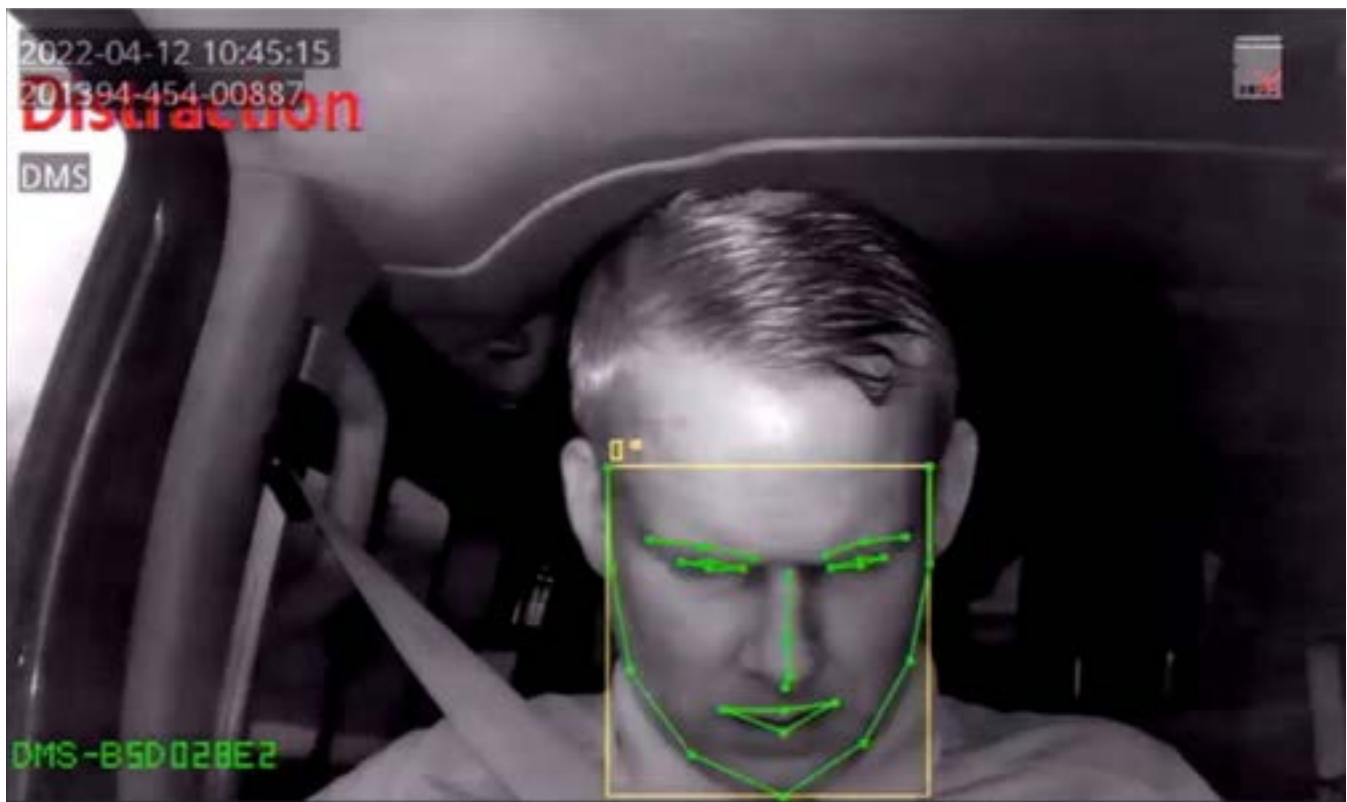


PS360C.1, PS360BOARDS

DRIVER MONITORING SYSTEM

FATIGUE IS A MAJOR CAUSE OF ROAD CRASHES, AND COULD BE AS DANGEROUS AS DRINK-DRIVING.

Parksafe Group's Driver Monitor System (DMS) helps monitor and alerts the driver when drowsiness or distraction is detected. When used alongside our Live Parksafe on Demand Platform it can further enhance driver safety by alerting the Fleet Manager, this means that the Fleet Manager can check on their driver to ensure they are okay.



The camera is mounted on the dash and provides a full view of the driver, without obstructing their view of the road.

FEATURES & BENEFITS

• **Detect and Alarm Driver of Unsafe Behaviour:**
fatigue detection, distraction detection, phone call detection, smoking detection and no driver detection.

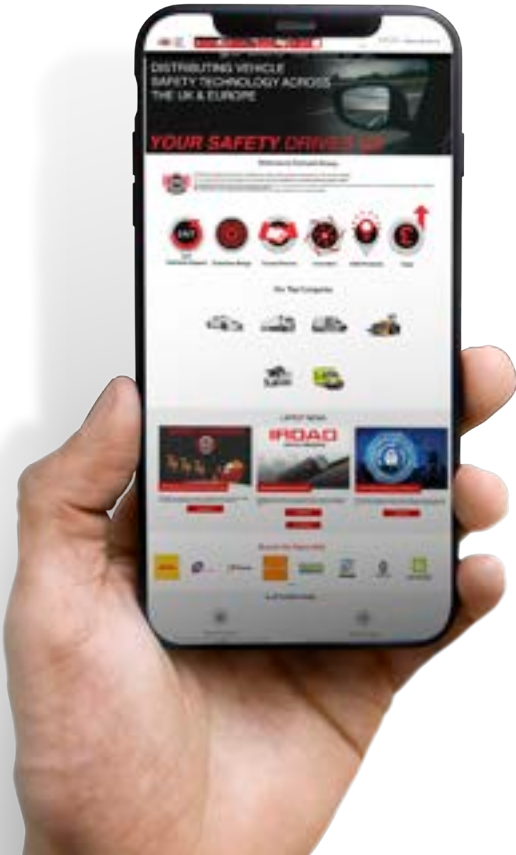
• **Seamless Integration with MDVR:**
Real-time alarm and video uploading to connected platform for abnormal driving behaviour.

• **Built-in high Definition Alarm Recording:**
(1920 x 1080 resolution, 20 seconds synchronous recording when alarm triggered)

• **Built-in GPS Module:**
Recording Speed and Location.

• **Built-in Infrared Light:**
Driver status can be effectively detected with low light condition. The driver could be wearing sunglasses and detected.

STAY CONNECTED: WI-FI AND 4G ROUTERS



Help your passengers stay connected on board with our cost-effective Wi-Fi Router.

Wi-Fi is no longer seen as a luxury, instead it's often expected by passengers – not just on long journeys, but increasingly on short commutes. From checking in with family, to posting on social media and playing games to browsing the internet, our Wi-Fi helps your passengers do it with ease!

To ensure as much bandwidth and coverage as possible, Parksafes's Wi-Fi routers and intelligent vehicle gateways use multi-network systems. This also provides as much protection as feasible against network blackspots; if one provider has no coverage of an area, others often will.

However, for many operators, the real benefit is using existing connections to bring on board data into new cloud-based applications for quick access and easy analysis.

Industrial Wi-Fi Router

Robustel's R1510 router is a Dual Ethernet port (LAN + WAN) 3G/4G router with advanced software functions at a very competitive price point. The R1510 has many unique software innovations including, but not limited to:

RobustVPN, RCMS, Data Guard, Smart Reboot.

Specifications:

- Input voltage: 9 ~ 36V DC
- Power consumption: Idle: 100 mA@12 V
- Number of antennas: 2 External antennas (MAIN + AUX)
- Connector: RP-SMA-K (External antenna)
- SIM: 1 x Mini SIM (2 FF)
- Security: WEP, WPA, WPA2

- Data speed: 2 x 2 MIMO, 300 Mbps
- Data link: 500 mA (peak) @12 V
- Frequency bands: 2.4 GHz
- Encryption: 64/128 AES, TKIP

• **Approvals & Certifications:** CE

• **Dimensions:** 91.5mm x 91.5mm x 30.8mm



PS1510

Industrial Cellular Wi-Fi Router

The Robustel R2010 Industrial Cellular Gateway is a rugged, versatile 4G Gateway with dual Ethernet ports, dual SIM single standby capability and a range of advanced functions for mission critical IoT or M2M applications.

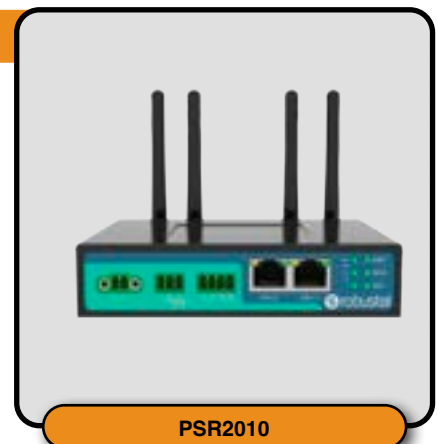
Specifications:

- Input voltage: 9 ~ 36V DC
- Power consumption: Idle: 200 mA@12 V
- Number of antennas: 2 (MAIN + AUX) or 1 (MAIN)
- Connector: SMA-K
- SIM: 2 x Mini SIM (2FF)
- Security: WEP, WPA, WPA2

- Number of ports: 2 x 10/100 Mbps, 2 x LAN or 1 x LAN + 1 x WAN
- Data speed: 2 x 2 MIMO, 300 Mbps
- Data link: 580 mA (peak)@12 V

• **Dimensions:** 127mm x 82mm x 30 mm

• **Approvals & Certifications:** CE, RoHS 2.0



PSR2010

ON DEMAND ANTENNA'S



PSANT-LTE-GPS

3 in 1 Combo Puck Antenna

The 3 in 1 GPS/GLONASS and MiMo 4G/5G Antenna is a low profile, heavy duty, IP66 antenna that is use for telematics, transportation, industrial and remote monitoring applications, as well as broadband Internet access.

Specifications:

- Coverage: 2G, 3G, 4G, 5G
 - Cellular Frequency Range: 698-960MHz, 1710-3800MHz
 - Cellular Gain: 3dBi
 - GPS Frequency Range: 1575.42MHz, 1602MHz
 - GPS Gain: 28dBi
 - Inputs – Cellular: 2
 - Inputs – GPS: 1
 - Weight: 0.2 kg
 - Cable Type: RG174
 - Connector: SMA Male
 - Environment: Harsh, Indoor, Outdoor
 - Cable Length: 3M
 - Impedance: 50Ohm
 - Max Input Power: 50W
 - Mount: Adhesive, Screw, Through Hole
 - Operating Temperature: -40°C to +70°C
 - Radiation: Omni Directional
 - VSWR: ≤ 2
 - Polarization: RHCP, Vertical
 - Waterproof Rating: IP66
 - Colour: Black
- **Dimensions:**
8cm x 8cm x 2 cm



PSANT-WIFI

Dual Band Wi-Fi Low Profile Adhesive Antenna

The Wi-Fi Adhesive Mount, omni-directional low-profile antenna delivers high performance across 2.4GHz and 5GHz Wi-Fi bands from 2400-2483 to 5150-5850MHz and provides a gain of 3dBi.

Specifications:

- Wi-Fi Frequency Range: 2.4GHz, 5GHz
 - Wi-Fi Gain: 3dB
 - Cable Length: 3M
 - Cable Type: LMR100
 - Connector: RPSMA Male
 - Weight: 45g
 - Environment: Vehicle, Harsh, Indoor, Outdoor
 - Impedance: 50Ohm
 - Inputs: 1
 - Operating Temperature: -40°C to +70°C
 - Radiation: Omni Directional
 - VSWR: ≤ 1.8
 - Polarization: Vertical
 - Waterproof Rating: IP67
 - Colour: Black
- **Dimensions:**
22cm x 0.5cm x 11.5 cm



PSANT-EXT-WIFI

Dual Band Wi-Fi Puck Antenna

This is a high performance antenna that provides dual-band 2.4G and 5G Wi-Fi connectivity, in an ultra low-profile, rugged housing. The antenna provides multi-band coverage and covers all current Wi-Fi frequencies (2400-2483, 5150-5250, 5750-5850MHz). Its IP66 design provides maximum protection against water or dust ingress under a low-profile, UV-resistant black housing.

Specifications:

- Wi-Fi Frequency Range: 2.4GHz, 5GHz
 - Wi-Fi Gain: 3dBi
 - Supports: 802.11B/G/N/AC/AX standard
 - Cable Length: 3M
 - Cable Type: RG174
 - Connector: RPSMA Male
 - Environment: Vehicle, Harsh, Indoor, Outdoor
 - Impedance: 50Ohm
 - Inputs: 1
 - Operating Temperature: -40°C to +70°C
 - Radiation: Omni Directional
 - VSWR: ≤ 2
 - Polarization: Linear
 - Waterproof Rating: IP66
 - Colour: Black
- **Dimensions:**
8cm x 8cm x 1.5 cm

S7 STOLEN VEHICLE TRACKING

PROTECTION AGAINST THEFT

Car theft continues to surge at a staggering rate, DVLA data revealed that in 2022 58,082 vehicles were stolen – That's an average of 159 vehicles per day and 1,117 a week. Surprisingly 42% of vehicles are taken from close to the owner's home, so even if you're parked on your driveway, it remains at risk!



Having your vehicle stolen, whether it's personal or part of an operations fleet can be an extremely inconvenient, stressful, and costly experience. And with theft rates continuing to rise, every single day, you need to protect yourself with the best tracking device possible to help keep your vehicle safe from theft.



Theft



Tracked



Found

BENEFITS:

- ✓ **NO INSTALLATION** costs, simple DIY set up.
- ✓ **EASY** remote management with Web & App access.
- ✓ **LOW RISK** of undetected removal due to motion And tamper alerts.
- ✓ **UP TO 5 YEARS** battery life (dependant on mode selection).
- ✓ **FULLY RECHARGEABLE** with automatic low charge alerts.
- ✓ **INSURANCE-APPROVED** Thatcham S7 tracking system.
- ✓ **OPTIONAL** recovery service with target 1-hour National response time.

DESIGNED FOR: VANS, TRAILERS, PLANT, CARAVANS & HIGH VALUE ASSETS

Ideal for vans, trailers, plant and caravans, the S7 Tracker helps solve the traditional problem of tracking devices being easy to find and remove by magnetically attaching anywhere on a vehicle or asset.



The S7 Tracker was developed to offer you cost-effective peace of mind knowing that your high value assets are protected and recoverable in the case of theft. Its flexible magnetic mounting system and once daily standard reporting frequency, make it extremely tricky to locate, even with GPS detectors.

Its flexible magnetic mounting system and once daily standard reporting frequency, make it extremely tricky to locate, even with GPS detectors. Combined with automatic tamper and motion alerts, this significantly reduces the chances of your asset being removed without your knowledge.

Should the worst happen and one of your high value assets is stolen, the S7 Tracker gives you the best possible chance of recovering your property. GPS tracking is backed up by cell-ID based location information, giving you a secondary tracking option where GPS isn't available.

The device is also linked to our **Parksafe On Demand** network so, should you want help recovering your asset, a recovery service with an average 1 hour national response time can be deployed to ensure your asset doesn't get far.

Magnetic Thatcham Approved S7 Tracker

Battery-powered, magnetic assist recovery device. Easy to self-install, waterproof and designed to last up to 5 years on a single charge (2 years MagTrack+), MagTrack solves the traditional problem of tracking devices being easy to find and remove, by magnetically attaching anywhere on a vehicle or asset.

Specifications:

- IP65 waterproof
- Rechargeable Battery capacity: 7800mAh
- Power Consumption:
 - Active mode: < 85mA @ 3.8VDC
 - Sleep mode: < 5mA @ 3.8VDC
 - Deep sleep mode: < 15uA @ 3.8VDC
- Operation temperature: -20°C to 65°C
- USB charging port (equipped with USB charger)
- Built-in Cellular & GPS antenna
 - 162 dBm Tracking Sensitivity
- Location Technology (56 channel GPS)
- Location Accuracy (2.5 meter CEP)
- Quad-Band: GSM/GPRS 850/900/1800/1900 MHZ
- GPRS multi-slot class 12
- Output Power:
 - Class 4 (2W @ 850/900MHZ)
 - Class 1 (1W @ 1800/1900MHZ)
- Protocol: TCP/UDP/SMS
- Weight: 286g
- **Dimensions:** 86mm x 62mm x 33mm



PSODMAGS7

Use this product with our web based reporting platform



ON DEMAND TRACKERS

Three Wire Tracker with Fully Populated Loom

The Parksafe On Demand - 3 Wire Tracker is a robust device suited for wide and varied vehicle and plant fleet applications. The integrated 3-axis accelerometer gives accurate driver behaviour measurement and crash detection.

Extra sensitive GPS technology provides accurate location and speed information while GPRS/GSM communication transmits data over all major networks for live, scheduled and historic telematics reporting and alerting.

Live reporting options:

- Speed limit
- Business miles
- Daily start / end
- Time on site
- Vehicle idling
- Geo-fence & POI alerts

Optional accessories:

- Optional remote immobilisation
- Driver identification
- Temperature sensor
- Driver feedback unit



PSODFPOP

Use this product with our web based reporting platform



Tacho Tracker with Remote Downloads & Driver Behaviour

The Parksafe On Demand - Tacho tracker allows remote Tacho data retrieval from your fleet 24/7. The system is fully integrated and supported by all major Tachograph Analysis providers across UK & Europe.

Our Parksafe On Demand Tacho dashboard gives fleet operators access to LIVE visibility of the real-time tacho status, of all drivers. Any driving infringement warnings and those drivers with the least/most remaining driving hours. Order drivers by most remaining driving hours by day, week or two weeks for the most efficient use of your and their time.

A GPS tracking device will be installed in each vehicle of your fleet, this will transmit LIVE tracking data back via our web based fleet management platform to your PC, Tablet or Mobile. The Tacho tracking device communicates and delivers real-time data using 3G or 4G networks to give you access to driving data anytime, anywhere.



PSODTACHTR

Use this product with our web based reporting platform



ON DEMAND TRACKERS



PSODNANO

Use this product with our web based reporting platform



Nano Tracker Securely Concealed & Fitted to the Vehicles Battery

The Parksafe On Demand Nano Telematics Solution is a smart waterproof tracker that secures to the vehicle battery reducing the risk of removal. With the Nano device installed you will be able to access information on your fleet from an intuitive and insightful dashboard.

This battery-mounted telematics device is complimented with Bluetooth connectivity and an internal backup battery. The Nano does not conflict with any existing telemetry solutions already in place and is equipped with special clamp connector for fast power cable connection to the car battery.

Solid waterproof case and built-in accelerometer & gyroscope sensors with highly accurate crash data and communicate with our cloud servers to provide details on driver behaviour, location and journey data for analysis and presentation on the fleet dashboard.



PSODMAGTR

Use this product with our web based reporting platform



Trailer and Asset Tracker

Our Parksafe On Demand Trailer Tracker is carefully designed with a long battery life, it can last 5 years (one report per day) with a 7800/10200 mAHr battery

- Sends GPS (Location, speed) information to your application server with configurable report interval (moving or stationary)
- Supports circle and polygon Geo-fencing
- Possibility to store up to 1000 messages without loss of coverage
- Optional feature which the device will automatically wake up when it senses moving of the asset and power down itself when it is stationary
- When battery level is low, it will send 'low-battery' alarm message
- Battery: 7800/10200mAHr
- Using embedded light sensor to detect the drop/detach from asset
- Reports cell-ID based location information where GPS is not positioned
- Configuration, settings and firmware can be remotely upgraded
- IP65 waterproof



PSODOBDTR

Use this product with our web based reporting platform



OBD plug in Tracker with Driver Behaviour

Our Parksafe On Demand OBD Tracker conveniently plugs into your OBD-II socket on any vehicle below 3.5 tonnes to offer rich telemetry without the downtime and cost of a hard-wired install. Compatible with our industry leading driver scoring algorithms, this device offers all the reporting benefits of a wired device including crash alert, with the added ability to download and decode diagnostic trouble code information from your engine management system.

An integrated battery backup alerts to device removal and the device can be supplied with an anti-tamper kit to discourage unauthorised removal.

- Plugs directly into Vehicle OBD-II Port (On Board Diagnostic Port)
- Supplied with optional OBD Extension Lead
- Vehicle fleet management
- Driver scoring and fleet risk management
- Self-installation capability

TRACKERS & ACCESSORIES

Lone Worker Tracker

The Parksafe On Demand Lone worker Tracker is an AUTONOMOUS personal tracker with GNSS, GSM and Bluetooth connectivity. This mini tracker is designed for people, car monitoring, employees control etc... IP67 waterproof case ensures outside usage in harsh conditions, a large battery capacity expands the application range where long battery lifetime is needed. In addition to that, the Parksafe On Demand Lone Worker Tracker supports hands-free, firmware and configuration update via Bluetooth.

- Alarm button & action on call feature
- Man-down detection
- Auto Geo-fencing with 50 manual Geo-fence zones
- Over Speeding
- GPS Sleep/Deep Sleep/Online deep sleep modes
- Two – way communication over Bluetooth with real time tracking
- Sending acquired data via GPRS (TCP/IP and UDP/IP protocols)
- Smart algorithm of GPRS connections for GPRS traffic saving
- Operating in roaming networks by preferred
- Events from I/O elements detection and sending via GPRS or SMS
- Authorized numbers
- Time synchronisation over NTP and NITZ headphones
- Offline tracking mode



PSODLPTR

Use this product with our web based reporting platform



Integrated Keypad & Card Reader with Tracking

The integrated keypad and card reader, coupled with immobilisation, enables managers to limit asset use to qualified, authorised users.

Vehicle Fleet Management Access control for plant, machinery vehicles. Full GPS tracking via PC / Laptop / Tablet / Smartphone & App with Full telematics reporting.

Compatible with:

- Contactless Card/ RFID
- Driver / Operator ID
- Remote immobilisation

Automated alerts for:

Voltage Alert, Service Alert/ Hours, Ignition on/off, Battery level / disconnect / reconnect, POI (Point Of Interest) Geo-fencing & Unauthorised use



PSODCONTR

OBD Tracker 'Y' Loom Connector for Any Vehicle

The OBD 'Y' loom enables an OBD tracker to be connected to virtually any vehicle, by using one of the 12 OEM style adaptors provided.

- The PSOBDLOOM allows the garage diagnostics tool to be plugged into the OBD even when a Parksafe OBD tracker is fitted
- The 12 adaptors allow OEM style fixings to connect to the Parksafe OBD Tracker
- The PSOBDLOOM kit includes 12 manufacturer specific adaptors, allowing connection to virtually any vehicle in one handy kit.



PSOBDLOOM

TRACKERS & ACCESSORIES



PSODTEMP

Temperature Sensor

Looking to monitor temperature levels in refrigerated trailers? Use our temperature sensors and you will remotely be able to keep an eye on your vehicles trailers.

In conjunction with our GPS Telematics device the fleet operator will be able to receive real-time tracking information including location, direction, speed, idle time, start/stop, and G-Sensor events, allowing them to run and manage more efficient fleet operations pro-actively.



PSODREMLM

Remote immobilisation Loom

Add remote immobilisation to your vehicles telematics device this allows company vehicles to be immobilised remotely via our Parksafe On Demand Web Portal.

Set up remote automated email alerts, containing vehicle details and current location, should a vehicle be moved without the knowledge or approval of the company or owner. Additionally you can add Driver ID, where drivers have to use the Dallas key before the ignition activates. You will then know which drivers are driving each vehicle.

Improve the stolen vehicle recovery rate with remote immobilisation, this increases the chances of recovering a stolen vehicle from where it was taken.



PSODLIF

Driver Feedback Unit

The Parksafe On Demand LIVE Driver Feedback Unit allows you to monitor individual vehicle driving styles. With our state of the art LIVE driver behaviour reporting system it allows you to download manually or schedule reports daily, weekly or monthly. You can then analyse the data, to report on the way drivers behave. This includes excessive acceleration, harsh braking, speeding events, night driving and urban driving.

The LIVE data collected can then be used to increase and raise awareness of safer driving, by implementing initiatives amongst the drivers, then companies help to develop a culture of safe driving within the business.

LIVE reporting suite includes:

- Speed limit
- Business miles
- Daily start / end
- Time on site
- Vehicle idling
- Geo Fence & POI Alerts



PSODRFID

RFID card reader - Driver ID fobs & Cards

The Parksafe On Demand RFID Card Reader is perfect for keeping in touch with your drivers, not just the vehicles! Each driver gets a unique RFID card which they will have to scan before the journey.

Parksafe On Demand Telematics offer an extensive Driver Behaviour reporting system that allows you to download manually or schedule reports daily, weekly or monthly. You can then dive into the data and into the way drivers behave. This includes Harsh acceleration, Harsh braking, Speeding events, Night driving, Urban driving.

TRACKERS & ACCESSORIES

CANBus Click: For Live Fuel & MPG Data 24/7

The Parksafe On Demand tachograph telematics unit gives full telematics data and reporting, for live fuel but it needs to connect to the CANBus.

FMS Gateway Connection

This method requires the vehicle to be checked and this is via connecting to the FMS gateway. We supply a contactless "CANCLICK" which connects to the tachograph unit via contactless connection to the vehicle FMS gateway to pull the same Live Fuel and Live MPG data.

The issue with the FMS gateway method is that a lot of fleet owners simply don't know if the FMS gateway is "OPEN" and enabled on the vehicle. It doesn't guarantee data retrieval at anytime unlike the PSODCAN-20 below.



PSODCANCLICK

CANBus Box 200: For GUARANTEED Live Fuel & MPG Data 24/7

The Parksafe On Demand tachograph telematics unit gives full telematics data and reporting, for live fuel, you need to connect to the CANBus.

By adding the PSODCAN-20 this a "GUARANTEED" method of connecting to the CANBus to pull live fuel data and live MPG data. There is no need to visit the vehicle to check, it's a guaranteed connection straight to the vehicle's CANBus, the make, age and model of vehicle makes no difference either, it's still a guaranteed connection regardless.

You will receive live fuel and Live MPG we always quote to include the PSODCAN-20 as it's 100% guarantee of pulling the data, there's no need to go out and check, we include it as part of the install kit.



PSODCAN-20

Driver ID Kit: Including Fob, Reader & Buzzer

The Parksafe On Demand Tracker Device can identify each individual driver using a uniquely coded Dallas key which gets assigned to each employee. The Driver will be required to tap the Dallas key to the Driver ID reader fitted within the vehicle before the ignition is turned on.

Benefits of Driver ID:

- Differentiates between business and private mileage
- Monitors driver behaviour, promoting safe & fuel efficient driving
- Reduces admin workload – time-sheets can be delivered as & when required
- Highlight a drivers performance speeding, sharp braking, accidents & motoring offences
- Time & journey data from each driver, ensuring easy fleet management
- Improves security – the Dallas key and reader can act as a secondary immobiliser, meaning the vehicle will not start until the two are paired.



PSODFOBID

COMMERCIAL VEHICLE PRODUCTS

INCLUDES

- Sensor **Detection Kits**
- Audible **Alarms**
- **Warning** Systems
- The **FORS Standard**
- **Direct Vision Standard (DVS)**
- **CLOCS**



SENSOR DETECTION KITS

QUICK LOOK: Detection Kits:

Product Code:	Description:
PSSI1.3	4 Sensor Side Detection Kit with Buzzer
PSSI1.4D	4 Sensor Side Detection Kit with Traffic Light Style Display
PSRS1.1D	4 Sensor Rear Detection Kit with LED Display
PSST1.3	3 Sensor Step Detection Kit with Buzzer
PSSI1.2SEN	2 Sensor Side Detection Kit with Buzzer
PSVID.1	4 Sensor Side Detection Kit with Video Overlay
BLIND1	4 Sensor Side Detection Kit, Signal Indicator Switch, Left Turn Alarm & Blind Spot Sticker



PSSI1.3

4 Sensor Side Detection Kit: with Buzzer

Specification:

- Voltage: 9 ~ 36V DC
- Number of Sensors: 4
- Sensor Head Size: 28mm
- Mounting: Direct Angled Head, Flat Collars, Angled Collars, Underhung Brackets (x 4)
- Buzzer Only
- Waterproof Sensor: IP68
- Waterproof ECU: IP69K
- Detection Range: 0.00 to 1.5M
- Detection Zones: 3
- Minimum Sensor Height: 40cm
- Power Consumption - 2.4 Watts @ 12 VDC
- Current Consumption: 200mA



PSSI1.4D

4 Sensor Side Detection Kit: with Traffic Light Style Display

Specification:

- Voltage: 9 ~ 36V DC
- Number of Sensors: 4
- Sensor Head Size: 28mm
- Mounting: Direct Angled Head, Flat Collars, Angled Collars, Underhung Brackets (x 4)
- Traffic Light Style Display with Buzzer & High/Low Tone Button
- Waterproof Sensor: IP68
- Waterproof ECU: IP69K
- Detection Range: 0.00 to 1.5M
- Detection Zones: 3
- Minimum Sensor Height: 40cm
- Power Consumption - 2.4 Watts @ 12 VDC
- Current Consumption: 200mA



PSRS1.1D & PSRS1.1

4 Sensor Rear Detection Kit: with LED Display

Specification:

- Voltage: 9 ~ 36V DC
- Number of Sensors: 4
- Sensor Head Size: 28mm
- Mounting: Direct Angled Head, Flat Collars, Angled Collars, Underhung Brackets (x 4)
- LED Display with Buzzer
- Waterproof Sensor: IP68
- Waterproof ECU: IP69K
- Detection Range: 0.00 to 3M
- Detection Zones: 3
- Minimum Sensor Height: 40cm
- Power Consumption: 2.4 Watts @ 12V DC
- Current Consumption: 200mA

Product Code:	Description:
PSRS1.1D	With Display
PSRS1.1	With Buzzer

SENSOR DETECTION KITS

2 Sensor Side & 3 Sensor Step Detection Kit: with Buzzer

Specification:

- Voltage: 9 ~ 36V DC
- Number of Sensors: 2 or 3
- Sensor Head Size: 28mm
- Mounting: Direct Angled Head, Flat Collars, Angled Collars, Underhung Brackets
- Buzzer Only
- Waterproof Sensor: IP68
- Waterproof ECU: IP69K
- Detection Range: 0.00 to 1M
- Detection Zones: 2
- Minimum Sensor Height: 40cm
- Power Consumption: 2.4 Watts @ 12V DC
- Current Consumption: 200mA

Product Code:	Description:
PSSI1.2SEN	2 Sensor Side Detection Kit with Buzzer
PSST1.3	3 Sensor Step Detection Kit with Buzzer



PSSI1.2SEN & PSST1.3

4 Sensor Side Detection Kit: With Video Overlay

Specification:

- Voltage: 9 ~ 36V DC
- Number of Sensors: 4
- Side Detection
- Mounting: Direct Angled Head
- Buzzer with Video Overlay
- Camera Compatibility: D1 CMOS or CCD
- TV System: NTSC / PAL
- Sensor Head: 22mm
- Waterproof Sensor: IP68
- Waterproof ECU: IP69K
- Detection Distance: 0.00 to 1.5M
- Detection Zones: 3
- Minimum Sensor Height: 40cm
- Power Consumption - 2.4 Watts @ 12V DC



PSVID.1

Side Detection Kit: Signal Indicator Switch & Left Turn Alarm

Parksafe Blind Spot kits warn the driver of potential hazards hidden in the vehicle's blind spot area by a sensor detection system.

The public are warned that the vehicle is turning by an Audible Alarm, triggered by the PSPK3.DVS signal/indicator switch.



BLIND1

AUDIBLE ALARMS



PSLEFTALARM

Talking Left Alarm

Specification:

- Voltage: 9 ~ 32V DC
- Sound: **'Beep, Warning this Vehicle is Turning Left'**
- Sound Pressure: 90dB to 92dB
- Rated Current 0.5A
- Two Bolt Mounting
- 4 Wire Triggers: 4 way Superseal with Left Trigger and Mute
- Operating Temperature: -40 to +85°C
- Water Resistance: IP68



PSLEFT/RIGHT

Left & Right Turn Audible Alarm

Specification:

- Voltage: 9 ~ 32V DC
- Sound: **'Beep, Beep' Warning this Vehicle is Turning Left / Right'**
- Sound Pressure: 90dB to 92dB
- Rated Current 0.5A
- Two Bolt Mounting
- 4 Wire Triggers: 4 way Superseal with Left and Right Triggers
- Sound Frequency: 1.4KHz
- Operating Temperature: -40 to +85°C
- Water Resistance: IP68



PSDEMF

White Noise Double Engage Reverse Alarm

Specification:

- Voltage: 9 ~ 32VDC
- Sound: **White Noise / Multi Frequency**
- Sound Pressure: Normal Model 90dB
- Mode 1: 90dB to 0dB (silent by choosing the yellow loop wire).
- Mode 2: 90dB to 78dB (sound pressure reduction).
- Double Engage Mode can be Activated within 2 seconds
- Rated current: 0.5 amperes or less
- Two Bolt Mounting
- Water Resistance: IP68



EC-REVB LP

Beep, Beep, Beep Double Engage Reverse Alarm

Specification:

- Voltage: 9 ~ 32VDC
- Sound: **Continuous Beep, Beep**
- Sound Pressure: Normal Model 90dB
- Mode 1: 90dB to 0dB (silent by choosing the yellow loop wire).
- Mode 2: 90dB to 78dB (sound pressure reduction).
- Double Engage Mode can be Activated within 2 seconds
- Rated Current: 0.5 amperes or less
- Two Bolt Mounting
- Water Resistance: IP68
- Operating Temperature: -40°C to +85°C

AUDIBLE ALARMS



Heavy Duty Alarm

Our Heavy Duty Alarm is suited for use on Heavy Machinery and Plant. The solid metal construction is designed to stand up to the rigors of construction sites and other Harsh Environments.

Specifications:

- Voltage: 12V ~ 24V DC
- Sound: **"Beep Beep Beep, Warning Exclusion Zone"**
- Output: 102 ± 4dB @ 4ft
- Current: <0.6A
- Weight: 750g ± 10%
- Operating Temperature: -40°C ~ +85°C
- Frequency: Multi Frequency
- Duty Cycle: 0.85 ± 10% (50% ON / 50% OFF)



Multi Function Reverse Alarm

The rear and side blind spots can be a huge problem for HGV and LCV vehicles, with our Audible Reverse Alarms they can become a useful tool in order to alert other traffic and/or pedestrians.

Specifications:

- Voltage: 12 ~ 24V DC
- Output: 97± 4dB (A) at 4FT
- Current (max): 0.6A
- Weight: 350g ± 10%
- Operating Temperature: -40°C ~ +85°C
- Water Resistance: IP68

WIRE OPTIONS:

Green	"Caution Vehicle Turning Right"
Purple	"Caution Vehicle Turning Left"
Grey	"Reverse 1 Beep, Beep"
Yellow	"Reverse 2 Beep, Beep"
Grey/Yellow combined	"Warning Vehicle Reversing"
White	Mute on all Triggers



Reduced Volume Pedestrian Detect Alarm

This alarm is mainly designed to be housed inside the cab of the vehicle and will provide audible warnings when pedestrians are detected at a reduced volume. The dB level can also be raised via a trigger wire.

Specifications:

- Voltage: 12V ~ 24V DC
- Output: 70/90 ± 4dB (A) @ 4FT
- Current: (max) 0.6A
- Weight: 325g ± 10%
- Operating Temperature: -40°C ~ +85°C
- Frequency: 500Hz ~ 7KHz

DUTY CYCLE:

2.9S/T	Caution Pedestrian detected Front
2.7S/T	Caution Pedestrian detected Rear
3.5S/T	Caution Pedestrian detected Left
3.4S/T	Caution Pedestrian detected Right
2.4S/T	3 Beeps + Pedestrian detected*

* Combination of wires



4 Minute Timer Cut Out Relay (PSTCREL)

When fitted, pressing the dash mounted switch will illuminate & silence the reverse alarm when being used between the hours of 11:30pm and 7:00am for 4 minutes. After 4 minutes or reverse gear is disengaged the alarm will go back to normal and the light on the switch will go out.

AUDIBLE ALARMS

Self Adjusting Reverse Alarm

Specification:

- Voltage: 9 ~ 32VDC
- Sound: **Continuous Beep, Beep**
- Sound Pressure: 82dB to 102dB
 - Sound continually adjusts between 5-10dB according to the background noise.
- Rated Current 0.5A
- Two Bolt Mounting
- Sound Frequency: 1.4KHz
- Water Resistance: IP68
- Operating Temperature: -40°C to +85°C



EC-REVADJ

Talking Reverse Alarm

Specification:

- Voltage: 9 ~ 32VDC
- Sound: **'Warning this vehicle is reversing'**
- Sound Pressure: Normal Model 90dB
- Rated Current: 0.5 amperes or less
- Two Bolt Mounting
- 2 Wire Connection
- Water Resistance: IP68
- Operating Temperature: -40°C to +85°C



REVV01

USB Programmable Reverse Alarm

Reverse alarm with USB output lead for programming and uploading custom files. When activated alarm will play one uploaded custom file in mp.3 format

Specifications:

- Voltage: 12 ~ 24V DC
- Current: 0.6 Amperes or less
- Sound Output: Depends on sound file used
- Sound Unit: Speaker
- Duty Cycle: Depends
- Frequency: 500Hz ~ 7KHz
- Hole Centres: 75-85mm;
- Operating Temperature: -40°C ~ +85°C
- Weight: 350g ± 10%
- **Dimensions:**
105mm (W) x 68mm (H) x 45mm (D)



PSMULTIAL-USB

Hand Brake Warning Alarm

The Handbrake alarm will sound when a door is opened and the Handbrake is not applied. This is to help stop issues with roll away vehicles.

Specification:

- Voltage: 9 ~ 32VDC
- Sound: **"Beep Beep, Warning, Hand Brake is Not Applied"**
- Sound pressure: 97dB ± 4dB(A) @ 4ft
- Rated current <0.6A
- Two Bolt Mounting
- Sound frequency: 1.4KHz
- Operating Temp: -40°C ~ +85°C
- Water resistance: IP68
- **Dimensions:**
105mm (W) x 65mm (H) x 45mm (D)
- Warranty: 2 years



EC-REVHAND

WARNING SYSTEMS

Parksafe Group are proud to introduce our very own LED Cycle and Blind Spot Warning Lights, which are compliant with **FORS** to protect cyclist and vulnerable road users.

Did you know that vulnerable road users, especially cyclists are **FIFTEEN TIMES** more likely to be killed on British Roads than car drivers? Blindspots can't always be detected, especially in heavy traffic with cyclist having the advantage of gliding through on the nearside. We believe that Blind Spot Protection is essential for all road users, so why not take your audible warning alarms to the next level, with one of our HGV LED Blind Spot Warning Signs compatible with any vehicle!



HGV LED Blind Spot Cycle Warning Sign

The HGV LED Blind Spot Cycle Warning Sign warns vulnerable road users when the vehicle is turning left. With this HGV LED Blind Spot Cycle Warning Sign your vehicles will be noticed in the right way, as well as being compliant with FORS Standards.

Specifications:

- Suitable for 12V & 24V vehicles
- Bright LED Display (140mm x 140mm)
- Synchronised high intensity LED's flashing to extend visibility day or night.
- Flashes with vehicle indicator

• **Approvals & Certifications:**
E Mark



HGV LED Blind Spot Warning Sign

The HGV LED Blind Spot Warning Sign warns vulnerable road users when the vehicle is turning left. With this HGV LED Blind Spot Warning Sign your vehicles will be noticed in the right way, as well as being compliant with FORS Standards.

Specifications:

- Suitable for 12V & 24V vehicles
- Bright LED Display (140mm x 140mm)
- Synchronised high intensity LED's flashing to extend visibility day or night.
- Flashes with vehicle indicator

• **Approvals & Certifications:**
E Mark

Blind Spot Stickers



Blind spot stickers warn cyclists, pedestrians and other vulnerable road users for the blind spots; places around the vehicle that the driver cannot see.

Code:	Description:
STICKERFORS-L	Blind Spot Stickers - A4 Landscape
STICKERFORS-P	Blind Spot Stickers - A4 Portrait

Parksafe On Demand CCTV Sticker



Code:	Description:
CCTVSTICKER	Parksafe On Demand CCTV Sticker

COMPLIANT KITS

PROTECTING YOU, YOUR VEHICLE & THE PUBLIC



The Fleet Operator Recognition Scheme (**FORS**) and The Construction and Logistics Cyclists Safety Scheme (**CLOCS**) are nationwide vehicle safety specifications.

FORS is generally aimed at the Freight Sector but also applies to vans and other vehicles. **CLOCS** is more targeted at the Construction Sector, but again covers many vehicle types.

At **FORS Bronze** level there are **NO** requirements to fit product, but there is a time limit set at which Operators should progress to **FORS Silver** level.

FORS and **CLOCS** are aligned at **FORS Silver** level, where safety equipment becomes mandatory, so the requirements are the same whichever specification you are looking at. However **FORS Gold** has additional requirements.

Parksafe Group can provide expert advice, and supply a wide range of **FORS** approved equipment to increase safety for drivers, the public and other vulnerable road users, ensuring that your Fleet is compliant with all specifications. Our knowledgeable team can also deliver LIVE analysis on your entire Fleet, through the Parksafe On Demand reporting platform.

BASIC REQUIREMENT TO BECOME COMPLIANT: FORS, CLOCS & DVS

	DVS Safe System		FORS Bronze	FORS Bronze	FORS Silver / CLOCS	FORS Silver / CLOCS	FORS Gold	FORS Gold
Left Side Camera	HGVs > 12T	FORS Bronze	Artic >12T	Rigid >12T	HGVs >3.5T & Tractor units	Rigids >7.5T	HGVs >3.5T & Tractor units	Rigids >7.5T
Sensor System with Driver Alert								
Left Turn Speaker								
Warning Sign	DVS Progressive Safe System will replace DVS Safe System from October 2024							
Class V & VI Mirrors		HGVs >3.5T						
Side Guards								
Back-up Alarm								
Rear Camera								

FORS SILVER equipment will ensure you are **CLOCS** compliant.

PLEASE NOTE: DVS Progressive Safe System will replace DVS Safe System from October 2024

THE FORS STANDARD

BRONZE - FORS Compliant Commercial Vehicle Kits:



FORS Kit Compliance: BRONZE-R (Rigid)		
KIT CONTENTS PRODUCT CODE:	DESCRIPTION:	QTY:
STICKERFORS-P	(Portrait) - Blind Spot Sticker	1

SILVER - FORS Compliant Commercial Vehicle Kits for 7.5T < ARCTIC



FORS Kit Compliance: SILVER 7.5T < ARCTIC REQUIRED		
KIT CONTENTS PRODUCT CODE:	DESCRIPTION:	QTY:
STICKERFORS	Blind Spot Stickers	2
PSLEFTALARM	Turn Left Alarm "This vehicle is turning left"	1
PSTCREL	4 Minute Timer Cut Out Relay	1
PSDEMF	White Noise Double Engage Reverse Alarm	1
PSPK3.DVS	Signal/Speed Indicator Switch	1
PSC162FHDM	AHD & FHD Side Camera	1
PS035	7" 2 Channel Dashboard Monitor	1
PSSI1.3	4 Sensor Side Detection System with Buzzer	1



FORS Kit Compliance: SILVER 7.5T PREMIUM > ARCTIC RECOMMENDED		
KIT CONTENTS PRODUCT CODE:	DESCRIPTION:	QTY:
STICKERFORS	Blind Spot Sticker	2
PSLEFTALARM	Turn Left Alarm "This vehicle is turning left"	1
PSTCREL	4 Minute Timer Cut Out Relay	1
PSDEMF	White Noise Double Engage Reverse Alarm	1
PSPK3.DVS	Signal/Speed Indicator Switch	1
PSC162FHDM	(Left / Right) Side Camera	2
PS090	9" Quad View High Resolution LCD Monitor	1
PSSI1.4D	4 Sensor Side Detection with Traffic Light Display	1
FHDFRONT.1	AHD & FHD Front Camera	1
PSOD005	5 Channel MDVR (4CH + 1CH IP) with WiFi & GPS	1
SSD960	1TB SSD Solid State Drive	1



THE FORS STANDARD

SILVER - FORS Compliant Commercial Vehicle Kits for 7.5T < RIGID



FORS Kit Compliance: SILVER 7.5T > RIGID <i>REQUIRED</i>		
KIT CONTENTS PRODUCT CODE:	DESCRIPTION:	QTY:
STICKERFORS	Blind Spot Sticker	2
PSLEFTALARM	Turn Left Alarm "This vehicle is turning left"	1
PSTCREL	4 Minute Timer Cut Out Relay	1
PSDEMF	White Noise Double Engage Reverse Alarm	1
PSPK3.DVS	Signal/Speed Indicator Switch	1
PSC162FHDM	AHD & FHD Side Camera	1
PS035	7" 2 Channel Dashboard Monitor	1
PSSI1.3	4 Sensor Side Detection System with Buzzer	1
FHDREAR	Full HD 1080p Rear Camera	1



FORS Kit Compliance: SILVER 7.5T PREMIUM > RIGID <i>RECOMMENDED</i>		
KIT CONTENTS PRODUCT CODE:	DESCRIPTION:	QTY:
STICKERFORS	Blind Spot Sticker	2
PSLEFTALARM	Turn Left Alarm "This vehicle is turning left"	1
PSTCREL	4 Minute Timer Cut Out Relay	1
PSDEMF	White Noise Double Engage Reverse Alarm	1
PSPK3.DVS	Signal/Speed Indicator Switch	1
PSC162FHDM	(Left / Right) Side Camera	2
PS090	9" Quad View High Resolution LCD Monitor	1
PSSI1.4D	4 Sensor Side Detection with Traffic Light Display	1
FHDREAR	Full HD 1080p Rear Camera	1
FHDFRONT.1	AHD & FHD Front Camera	1
PSOD005	5 Channel MDVR (4CH + 1CH IP) with WiFi & GPS	1
SSD960	1TB SSD Solid State Drive	1

GOLD - FORS Compliant Commercial Vehicle Kits for 7.5T < ARCTIC



FORS Kit Compliance: GOLD 7.5T < ARCTIC <i>REQUIRED</i>		
KIT CONTENTS PRODUCT CODE:	DESCRIPTION:	QTY:
STICKERFORS	Blind Spot Sticker	2
PSLEFTALARM	Turn Left Alarm "This vehicle is turning left"	1
PSTCREL	4 Minute Timer Cut Out Relay	1
PSDEMF	White Noise Double Engage Reverse Alarm	1
PSPK3.DVS	Signal/Speed Indicator Switch	1
PSC162FHDM	(Left / Right) Side Camera	2
PS035	7" Dashboard Monitor	1
PSSI1.3	4 Sensor Side Detection System with Buzzer	1

THE FORS STANDARD

GOLD - FORS Compliant Commercial Vehicle Kits for 7.5T < ARCTIC



FORS Kit Compliance: GOLD 7.5T > ARCTIC RECOMMENDED		
KIT CONTENTS PRODUCT CODE:	DESCRIPTION:	QTY:
STICKERFORS	Blind Spot Sticker	2
PSLEFTALARM	Turn Left Alarm "This vehicle is turning left"	1
PSTCREL	4 Minute Timer Cut Out Relay	1
PSDEMF	White Noise Double Engage Reverse Alarm	1
PSPK3.DVS	Signal/Speed Indicator Switch	1
PSC162FHDM	(Left / Right) Side Camera	2
PS090	9" Quad View High Resolution LCD Monitor	1
PSSI1.4D	4 Sensor Side Detection with Traffic Light Display	1
FHDFRONT.1	AHD & FHD Front Camera	1
PSOD005	5 Channel MDVR (4CH + 1CH IP) with WiFi & GPS	1
SSD960	1TB SSD Solid State Drive	1

GOLD - FORS Compliant Commercial Vehicle Kits for 7.5T > RIGID



FORS Kit Compliance: GOLD 7.5T > RIGID REQUIRED		
KIT CONTENTS PRODUCT CODE:	DESCRIPTION:	QTY:
STICKERFORS	Blind Spot Sticker	2
PSLEFTALARM	Turn Left Alarm "This vehicle is turning left"	1
PSTCREL	4 Minute Timer Cut Out Relay	1
PSDEMF	White Noise Double Engage Reverse Alarm	1
PSPK3.DVS	Signal/Speed Indicator Switch	1
PSC162FHDM	Side Camera	1
PS035	7" Dashboard Monitor	1
PSSI1.3	4 Sensor Side Detection System with Buzzer	1
FHDREAR	Full HD 1080p Rear Camera	1



FORS Kit Compliance: GOLD 7.5T > RIGID RECOMMENDED		
KIT CONTENTS PRODUCT CODE:	DESCRIPTION:	QTY:
STICKERFORS	Blind Spot Sticker	2
PSLEFTALARM	Turn Left Alarm "This vehicle is turning left"	1
PSTCREL	4 Minute Timer Cut Out Relay	1
PSDEMF	White Noise Double Engage Reverse Alarm	1
PSPK3.DVS	Signal/Speed Indicator Switch	1
PSC162FHDM	(Left / Right) Side Camera	2
PS090	9" Quad View High Resolution LCD Monitor	1
PSSI1.4D	4 Sensor Side Detection with Traffic Light Display	1
FHDREAR	Full HD 1080p Rear Camera	1
FHDFRONT.1	AHD & FHD Front Camera	1
PSOD005	5 Channel MDVR (4CH + 1CH IP) with WiFi & GPS	1
SSD960	1TB SSD Solid State Drive	1

PROGRESSIVE SAFE SYSTEM 2024 (PSS)



As part of the Mayor of London’s Vision Zero plan to eliminate all deaths and serious injuries on London’s transport network by 2024, TFL are proposing an enhancement to the current Direct Vision Standard (DVS) ‘Safe System’ with the introduction of the ‘Progressive Safe System’ (PSS) from October 2024.

Under the **current** scheme, HGVs over 12T must meet a minimum standard, where vehicles do not meet a minimum of one-star rating operators are required to implement a series of vehicle safety measures, which are designed to reduce the risks that HGVs present to vulnerable road users (VRU).

An HGVs DVS star rating is based on how much the driver can see directly through the vehicle’s cab windows of the area around the vehicle where collisions are most likely to take place.

To further improve the safety of **ALL** road users, **HGVs over 12T** will need to have a **MINIMUM OF THREE-STAR RATING** or fit the new PSS to operate in Greater London, from 28 October 2024.

PARKSAFE PSS 2024 KITS Suitable For HGV’s Entering DVS Zones From October 2024

Kit Code:	Product Code:	Kit Description:
PSS24-1	STICKERFORS	Blind Spot Sticker
	PSDETECT-CAM	Left Side 1080p Ai Pedestrian Detection Camera
	PSDETECT-CAM140	Front 1080p Ai Pedestrian Detection Camera
	PS038FHDQUAD	Quad Screen FHD Monitor
	PSLEFTALARM	Audible Left Turn Alarm
	PSAL-PSSLOWdB	Internal Audible “Pedestrian Detection” Alarm
	PSPK3.DVS	Speed & Indicator Module
	PSTCREL	4 Minute Timer Delay Switch for Panel

PLEASE NOTE: DVS Progressive Safe System will replace DVS Safe System from October 2024

DIRECT VISION STANDARD (DVS)

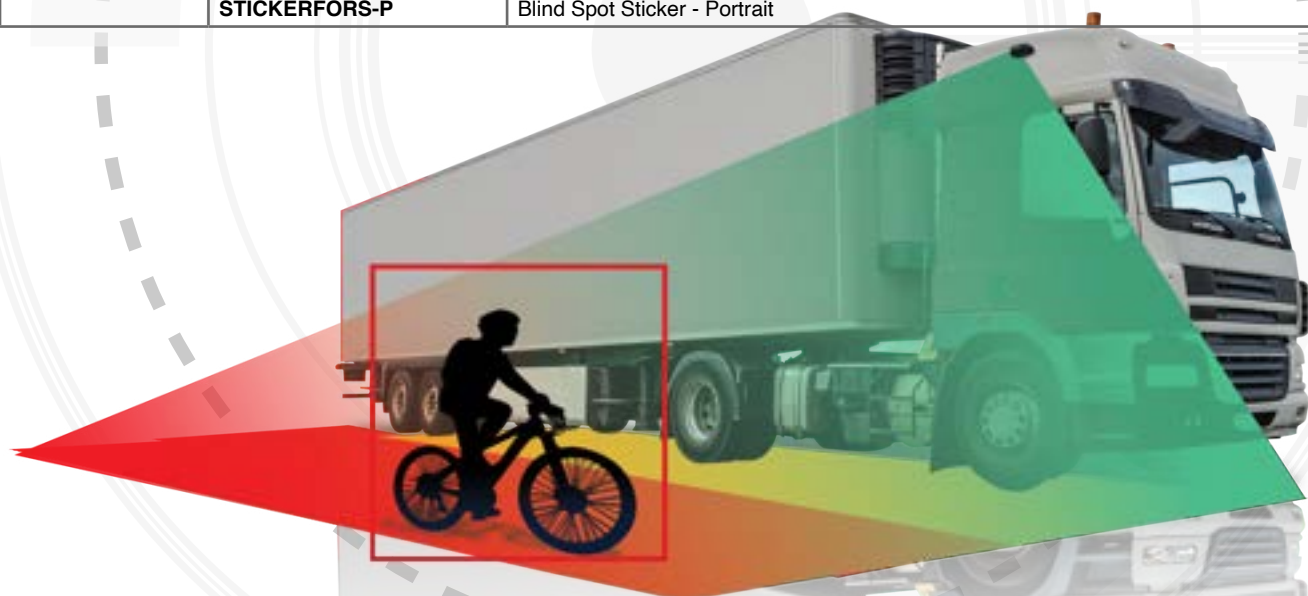
PARKSAFE PSS 2024 UPGRADE KITS

For Vehicles **currently fitted** with a DVS system that **currently pass TFL's approval standards**, we offer an upgrade kit that adds the additional kit required to pass the new PSS requirements.

Kit Code:	Product Code:	Kit Description:
PSS24-1UP- GRADE	STICKERFORS	Blind Spot Sticker
	PSDETECT-CAM	Left Side 1080p Ai Pedestrian Detection Camera
	PSDETECT-CAM140	Front 1080p Ai Pedestrian Detection Camera
	PS038FHDQUAD	Quad Screen FHD Monitor
	PSAL-PSSLOWdB	Internal Audible "Pedestrian Detection" Alarm
	PSTCREL	4 Minute Timer Delay Switch for Panel

PARKSAFE DVS KITS Suitable For HGV's Entering DVS Zones

Kit Code:	Product Code:	Kit Description:
BLIND1	PSLEFTALARM	Talking Left Alarm "Beep This Vehicle is Turning Left"
	PSSI1.3	4 Sensor Side Detection System with Buzzer
	PSPK3.DVS	Signal / Speed Indicator Switch
	STICKERFORS-P	Blind Spot Sticker - Portrait
BLIND3	PSLEFTALARM	Talking Left Alarm "Beep This Vehicle is Turning Left"
	PSSI1.3	4 Sensor Side Detection System with Buzzer
	AHDSIDE.1	AHD 720p Right side Blind Spot Camera
	PS035	7" AHD dashboard monitor with fan bracket
	PSPK3.DVS	Signal/Speed Indicator Switch
	STICKERFORS-P	Blind Spot Sticker - Portrait
BLIND4	PSLEFTALARM	Talking Left Alarm "Beep This Vehicle is Turning Left"
	PSSI1.3	4 Sensor Side Detection System with Buzzer
	PSC162FHDM	FHD 1080p Right side Blind Spot Camera
	PS035	7" AHD dashboard monitor with fan bracket
	PSPK3.DVS	Signal / Speed Indicator Switch
	STICKERFORS-P	Blind Spot Sticker - Portrait



PLEASE NOTE: DVS Progressive Safe System will replace DVS Safe System from October 2024

COMMERCIAL, UNIVERSAL & BRAKE LIGHT CAMERAS

INCLUDES

- **Wireless** Cameras
- **D1, AHD & FHD** Cameras
- **Front, Side & Rear** Cameras
- **Twin** Cameras
- **Universal & Number Plate** Cameras
- **Brake Light** Cameras



YOUR SAFETY DRIVES US

FRONT CAMERAS



FHDFRONT.1



Full HD 1080p Front Camera

Full HD 1080p Front Camera with WDR (Wide Dynamic Range).

WDR (Wide Dynamic Range): Video recorded at night or in low light situations with WDR increases the capacity to view license plates at night.

Specification:

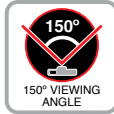
- Voltage: 12V DC
- Viewing Angle: 130°
- IP Rating: Non Waterproof (Internal)
- PAL
- WDR (wide dynamic range)
- Mounting: Adjustable Bracket
- Connection: 4 Pin

- Resolution: AHD 720p & FHD 1080p
- Cable Length: 500mm
- Power Consumption: 0.5A
- Working temperature: -20°C ~ +70°C
- Features: Microphone
- **Dimensions:**
75mm (H) x 40mm (L) x 40mm (W)

- **Approvals & Certifications:**
E Mark, CE, UKCA



IPFRONT-1080



Full HD 1080p IP Front Camera

IP FHD Front Camera with adjustable fixing bracket. Video recorded at night or in low light situations with WDR increases the capacity to view license plates at night.

WDR (Wide Dynamic Range): Video recorded at night or in low light situations with WDR increases the capacity to view license plates at night.

Specification:

- Voltage: 12V DC
- Viewing Angle: 150°
- PAL
- WDR (wide dynamic range)
- Mounting Methods: Bracket
- Connection: 6 Pin RG45
- Resolution: FHD 1080p

- Cable Length: 500mm
- Working temperature: -20°C ~ +70°C
- **Dimensions:**
40mm (W) x 75mm (H) x 30mm (D)

- **Approvals & Certifications:**
E Mark, CE, UKCA



FHDFRONT-WS



Full HD 1080p Front Windscreen Camera

Front view windscreen mount camera in Full HD 1080p.

WDR (Wide Dynamic Range): Video recorded at night or in low light situations with WDR increases the capacity to view license plates at night.

Specification:

- Voltage: 12V DC
- Viewing Angle: 120°
- IP Rating: Non Waterproof (Internal)
- PAL
- WDR (wide dynamic range)
- Mounting Methods: 3m pad on windscreen

- Connection: 4 Pin
- Resolution: FHD 1920 x 1080p
- Cable Lengths: 3m
- Power Consumption: 0.45A
- Working temperature: -20°C ~ +70°C

- **Dimensions:**
80mm (W) x 50mm (H) x 55mm (D)

TWIN & FRONT CAMERAS

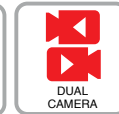
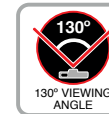
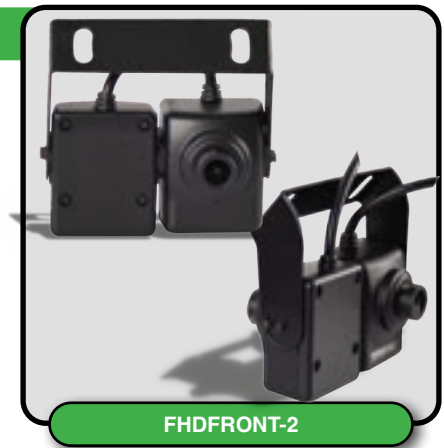
Full HD 1080p Front & Internal Camera

Full HD 1080p Dual Front and Drivers Camera with adjustable fixing bracket and compliant with FORS.

WDR (Wide Dynamic Range): Video recorded at night or in low light situations with WDR increases the capacity to view license plates at night.

Specification:

- Voltage: 12V DC
- Viewing Angle: 130° Front / 130° Driver Facing
- IP Rating: Non Waterproof (Internal)
- PAL
- WDR (wide dynamic range)
- Mounting Methods: Twin Camera Bracket
- Connection: 4 Pin
- Resolution: FHD 1080p
- Cable Lengths: 2 x 500mm
- Power Consumption: 0.5A
- Audio: Yes
- Working temperature: -20°C ~ +70°C
- **Approvals & Certifications:** E Mark, CE, UKCA



Full HD 1080p Twin FHD Side Cameras

This twin side camera features twin 1/3" CMOS sensors that record in full 1080p FHD. It records both side and downward views in a stylish & compact IP69K rated unit.

Upper Camera Specification:

- Resolution: FHD 1080p
- WDR (wide dynamic range)
- Waterproof: IP69K
- Meet the Angle requirements of Class II rear-view mirror

Additional Specifications:

- Voltage: 12V DC
- Connection: 4 pin
- Operating temperature: -20°C ~ +70°C, RH95%MAX

Lower Camera Specification:

- Resolution: FHD 1080p
- WDR (wide dynamic range)
- Waterproof: IP69K
- Meet the Angle requirements of Class IV rear-view mirror

• Audio: Yes

- Storage Temperature: -30°C ~ +80°C, RH95%MAX

- **Approvals & Certifications:** E Mark, CE, UKCA



Twin Universal D1 Camera

Universal D1 resolution Twin camera will give rear and downward views for vehicles with no rear visibility.

Specification:

- Voltage: 12 ~ 24V DC
- Viewing Angle: 70° / 80°
- IP Rating: IP67
- PAL
- IR: 15 LED's (8-10m Distance)
- Mounting Methods: Bracket
- Connection: Micro 8 pin to phono
- Resolution: 700TVL
- Extension Cable Length: 20m
- Power Consumption: 0.6A
- Working temperature: -20°C ~ +70°C
- **Approvals & Certifications:** E Mark, CE, UKCA



REAR CAMERAS



Full HD 1080p Rear Camera

FHD 1080p Rear Heavy Duty Camera with IR Lights and U Shaped Bracket.

Specification:

- Voltage: 12V DC
- Viewing Angle: 130°
- IP Rating: IP69K
- PAL
- IR: 4 LED's (8-10m Distance)
- Mounting Method: Surface Mount Bracket
- Connection: 4 Pin (IPREAR RJ45)
- Resolution: FHD 1080p & IP 1080p
- Extension Cable Length: 20m
- Power Consumption: 0.5A
- White Balance: Auto
- Operating Temperature: -20°C ~ +70°C
- Storage Temperature: -30°C ~ +80°C
- Audio: Yes
- **Approvals & Certifications:**
E Mark, CE, UKCA



Code:	Definition:
FHDREAR	FHD 1080P



D1 Heavy Duty Rear Camera

Heavy Duty Rear Camera with D1 Resolution. Rugged construction and fixing via U Bracket.

Specification:

- Voltage: 12V DC
- Viewing Angle: 130°
- IP Rating: IP69K
- PAL
- IR Lights: 18 LED's
- Mounting Method: U Bracket
- Connection: 4 Pin
- Resolution: 700 TV Lines
- Extension Cable Length: 20m
- Power Consumption: 0.4A
- Audio: Yes
- Working temperature: -20°C ~ +70°C
- **Dimensions:**
90mm (W) x 80mm (H) x 50mm (D)
- **Approvals & Certifications:**
E Mark, CE, UKCA



Code:	Option:
PSK11	PAL - Black
PSK11W	PAL - White
PSK11-NT	NTSC - Black



D1 Heavy Duty Mini Rear Camera

D1 Resolution Heavy Duty Mini Rear Camera with 5 LED Lights.

Specification:

- Voltage: 12 ~ 24V DC
- Viewing Angle: 120°
- IP Rating: IP67
- PAL & NTSC (switchable with wire)
- IR Lights: 5 LED's
- Mounting Method: U Bracket
- Connection: 4 Pin
- Resolution: 968 x 488, 700 TV Lines
- Extension Cable Length: 20m
- Power Consumption: 0.065A
- Audio: Yes
- Working temperature: -20°C ~ +70°C
- **Dimensions:**
56mm (W) x 42mm (H) x 63mm (D)
- **Approvals & Certifications:**
E Mark, CE, UKCA



REAR & SIDE CAMERAS



Full HD 1080p Side Camera

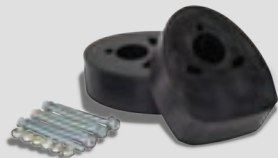
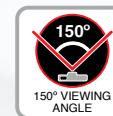
FHD 1080p side camera used to enhance blind spot vision.

Specification:

- Voltage: 12V DC
- Viewing Angle: 150°
- IP Rating: IP69K
- PAL
- IR: 6 LED's (5m Distance)
- Mounting Method: Bolt Mount
- Connection: 4 Pin
- Resolution: D1 or FHD 1080P
- Cable Lengths: 5m
- Power Consumption: 0.5A
- Audio: Yes
- Working temperature: -20°C ~ +70°C
- **Approvals & Certifications:**
E Mark, CE, UKCA

Side camera risers are available **PSSIDEBRAC** to lift the camera higher from the body of the vehicle.

Code:	Definition:
PSC162FHDM	FHD 1080p
IPSIDE	FHD 1080p



OPTIONAL Side Camera Risers

Side camera risers, robust rubber construction with bolt fittings.

Code:	Description:	Pack Size
PSSIDEBRAC	Side Camera Bracket (Pack of 2)	2

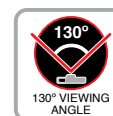
Wireless Heavy Duty Camera with 18 IR LED lights

Wireless Heavy Duty Camera with 18 IR LED Lights, U Shaped Bracket and sun shield.

Specification:

- Voltage: 10 ~ 32V DC
- Viewing angle 130°
- IP Rating: IP68
- Image Device: 1/3" CMOS
- PAL
- Resolution: 700 Tvl
- Min Lux: 0.1 Day 0 IR
- Microphone: Yes
- White Balance: Auto
- Operating Frequency: 2400-2483.5 Mhz
- Power consumption: 250mA@12v / 140mA@24v
- Transmit Range: 200M Open Air
- Transmit Speed: 4Mbps
- Operating Temperature: -20°C ~ +70°C
- Dimensions: 70mm (H) x 90mm (L) x 85mm (W)
- **Approvals & Certifications:**
E Mark, CE, UKCA

Wireless connection with **PS033** wireless monitor



DOME CAMERAS



Full HD 1080p Dome Camera

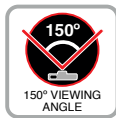
FHD 1080p Resolution Dome Cameras. Can be used with optional 15° & 25° Angled collars.

Specification:

- Voltage: 12V DC
- Viewing Angle: 150°
- IP Rating: IP69K
- PAL
- WDR (wide dynamic range)
- Connection: 4 Pin AVI
- Resolution: FHD 1080p
- Extension Cable Length: 10m

- Minimum Illumination: 0.1lux
- Power Consumption: 0.3A
- Resolution: 600TVL, 960(H) x 576(V)
- Operating temperature: -20°C ~ +70°C
- Storage temperature: -40°C ~ +80°C
- Dimensions: 76mm x 38mm

- **Approvals & Certifications:**
E Mark, CE, UKCA, FCC



Code:	Definition:
FHDDOME.1	FHD 1080P



Full HD 1080p Dome Camera

FHD 1080p Resolution Dome Cameras. Can be used with optional 15° & 25° Angled collars.

Specification:

- Voltage: 12V DC
- Viewing Angle: 150°
- IP Rating: IP69K
- PAL
- WDR (wide dynamic range)
- Connection: 4 Pin AVI
- Resolution: AHD 720P & FHD 1080p
- Extension Cable Length: 10m

- Minimum Illumination: 0.1lux
- Power Consumption: 0.3A
- Resolution: 600TVL, 960(H) x 576(V)
- Operating temperature: -20°C ~ +70°C
- Storage temperature: -40°C ~ +80°C
- Dimensions: 76mm x 38mm

- **Approvals & Certifications:**
E Mark, CE, UKCA, FCC



OPTIONAL Accessories



Code:	Description:	Pack Size
PSC55-A15	15° Surface Mount Base	1
PSC55-A25	25° Surface Mount Base	1

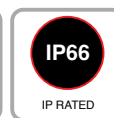
DOME & UNIVERSAL CAMERAS

Full HD 1080p IP Dome Camera

FHD 1080p High Resolution CCTV IP Dome Camera.

Specification:

- Voltage: 12V DC
- Viewing Angle: 130°
- IP Rating: IP66
- PAL
- 9 x IR LED's (IR Distance = 8-15m)
- Mounting Method: Flat Circular Bracket
- Connection: 6 Pin RG45
- Resolution: FHD 1080p
- Extension Cable Length: 15m
- Power Consumption: 0.5A
- Working temperature: -20°C ~ +70°C
- Approvals & Certifications: CE

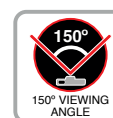


Full HD 1080p Universal Mount Camera

Side Camera used to enhance blind spot vision. This Universal Camera can be fitted to the front, side or rear of the vehicle.

Specification:

- Voltage: 12V DC
- Viewing Angle 150°
- IP Rating: IP69K
- Body Mounting
- Connection: 4 pin AVI
- Resolution: 600 TV Lines
- Cable Length: 1m
- Infra Red LED's: 6
- Working temperature: -20°C ~ +70°C
- Audio: Yes
- White Balance: Auto
- Dimensions: 50mm (W) x 32mm (L) x 57mm (H)
- Approvals & Certifications: E Mark, CE, UKCA



UNIVERSAL CAMERAS



Universal Strip Bar Camera

Universal Strip Bar Camera, D1 Resolution with IR illumination and parking lines.

Specification:

- Voltage: 12 ~ 24V DC
- Viewing Angle: 160°
- IP Rating: IP68
- PAL / NTSC Switchable
- Features: Parking Lines & Mirror Switchable
- IR Lights: 8 LED's
- Mounting Method: Bolted Surface Mount
- Connection: Phono
- Resolution: 728 (H) x 488 (V) TV Line: 580
- Extension Cable Length: 6m
- Power Consumption: 0.2A
- Dimensions: 190mm (W) x 30mm (H) x 25mm (D)

Approvals & Certifications:
E Mark, CE, UKCA



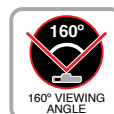
Full HD 1080p Universal Strip Bar Camera

Universal Strip Bar Camera, FHD 1080p Resolution with IR illumination and parking lines.

Specification:

- Voltage: 12 ~ 24V DC
- Viewing Angle: 160°
- IP Rating: IP68
- PAL / NTSC Switchable
- Features: Parking Lines & Mirror Switchable
- IR Lights: 8 LED's
- Mounting Method: Bolted Surface Mount
- Connection: Phono
- Resolution: 580 TV Lines; 728 (H) x 488 (V)
- Extension Cable Length: 6m
- Power Consumption: 0.2A
- Dimensions: 190mm (W) x 30mm (H) x 25mm (D)

Approvals & Certifications:
E Mark, CE, UKCA



Universal 14mm Mini Camera

Universal Body or Butterfly Bracket Mounted D1 Resolution Camera for fitting at the front or rear of the vehicle.

Front or rear body mount with stainless steel clips or butterfly mount.

Specification:

- Voltage: 12V DC
- Viewing Angle: 160°
- IP Rating: IP68
- PAL / NTSC Switchable
- Features: Parking Lines, Switchable
- Mounting Method: Body mount or Butterfly bracket
- Connection: RCA
- Resolution: 580 TV Lines
- Extension Cable Length: 6m RCA Cable
- Power Consumption: 0.3A
- Working temperature: -20°C ~ +70°C

Approvals & Certifications:
E Mark, CE, UKCA

UNIVERSAL CAMERAS

Universal 20mm Dome Camera

D1 Resolution Dome Camera can be mounted at the front or rear of the vehicle. It features Parking lines and Mirror function and is also PAL & NTSC switchable.

Front or rear body mount with stainless steel clips.

Specification:

- Voltage: 12V DC
- Viewing Angle 160°
- IP Rating: IP68
- PAL / NTSC Switchable
- Features: Parking Lines, Switchable
- Body Mount through 20mm Hole
- Connection: RCA

- Resolution: 580 TV Lines 728 (H) x 488 (V)
- Extension Cable Length: 6m RCA Cable
- Power Consumption: 0.2A
- Dimensions: 20mm (W) x 26mm (L) x 26mm (H)
- Approvals & Certifications: E Mark, CE, UKCA



Universal 20mm Wedge Camera

Discreet 20mm Wedge D1 Body Mount Camera, for use on the front, side or rear of the vehicle.

Front or rear body mount with stainless steel clips.

Specification:

- Voltage: 12V DC
- Viewing Angle: 170°
- IP Rating: IP68
- PAL / NTSC Switchable
- Features: Parking lines On / Off
- Body Mount through 20mm Hole
- Connection: RCA

- Resolution: 580 TV Lines
- Extension Cable Length: 6m RCA Cable
- Power Consumption: 0.2A
- Dimensions: 20mm (W) x 26mm (L) x 26mm (H)
- Approvals & Certifications: E Mark, CE, UKCA



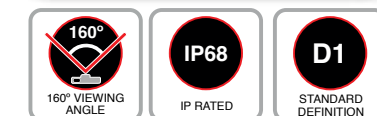
Square Body Mount Camera with Adjustable Bracket

The D1 Mini Square Camera is mounted on an adjustable bracket for flexibility of viewing angle.

Specification:

- Voltage: 12V DC
- IP Rating: IP68
- Viewing Angle 160°
- PAL / NTSC Switchable
- Features: Parking Lines, Mirror - Switchable

- Body Mount Bracket
- Connection: RCA
- Resolution: 580 TV Lines
- Extension Cable Length: 6m RCA
- Approvals & Certifications: E Mark, CE, UKCA



UNIVERSAL CAMERAS



PSC12P

120°

120° VIEWING ANGLE

IP67

IP RATED

D1

STANDARD DEFINITION

Universal Overhang Camera With Night Vision

Overhang Camera with night vision through 9 x IR Lights. Robust plastic casing and wide angle waterproof camera.

Optional Additional steel bracket for added durability (PSB12)
 Optional Bracket **PSB12** – Metal mounting bracket

Specification:

- Voltage: 12V DC
- Viewing Angle: 120°
- IP Rating: IP67
- PAL
- IR Lights: 9 LED's
- Mounting Method: Bracket or Steel Bracket (PSB12)
- Connection: 4 Pin with adapter
- Resolution: 700 TVL - Pixels: 976 (H) x 592 (V)
- Extension Cable Length: 10m
- Power Consumption: 0.2m
- Working temperature: -20°C ~ +70°C
- Audio: No
- Dimensions: H: 207mm x L: 133mm x W: 76mm

• **Approvals & Certifications:**
 E Mark, CE, UKCA

Mounting Bracket For PSC12 Camera

The Parksafe adapter bracket is an extension plate for the PSC12 camera, this allows you to extend the camera. Which will allow for wider angle of viewing for vehicles, this application would be suitable for wide hook over doors.



PSC34

170°

170° VIEWING ANGLE

IP68

IP RATED

D1

STANDARD DEFINITION

Number Plate Surround Camera

Number Plate Surround Camera with 4 Infra Red Lights. It attaches behind the vehicles rear number plate and provides a clean finish whilst providing a rear view solution for the driver.

Specification:

- Voltage: 12V DC
- Viewing Angle: 170°
- IP Rating: IP68
- PAL / NTSC Switchable
- IR Lights: 4 LED's
- Mounting Method: Bolted Number Plate Surround
- Connection: RCA
- Resolution: 600 TVL
- Extension Cable Length: 6m
- Power Consumption: 0.3A
- Working temperature: -20°C ~ +70°C
- **Dimensions:** 520mm (W) x 120mm (H) x 40mm (D)

QUICK LOOK BRAKE LIGHT CAMERA LIST

Vehicle Make:	Vehicle Model:	From:	Up To:	Camera Code:	Notes:
Universal	N/A	N/A	N/A	PSC17	-
Universal	N/A	N/A	N/A	PSC17B	Bolt on Camera
Ford	Transit	2014	*Present Day	PSC33	All Models
Ford	Transit Custom	2012	2016	PSC39	Barn/Split Door BULB version
Ford	Transit Custom	2016	*Present Day	PSC41	Barn/split Door LED version
Ford	Transit Custom	2012	*Present Day	PSC33	Tail Gate Up & Over Door
Ford	Transit Connect	2014	*Present Day	PSC56	-
VW	Crafter	2006	2017	PSC14	-
VW	Crafter	2017	*Present Day	PSC44	Fits to OEM Brake Light
VW	California	2010	2020	PSC46	Tail Gate Up & Over Door
VW	California	2010	*Present Day	PSC43	Barn/Split Door
VW	Transporter T5/T6	2016	2020	PSC46	Tail Gate Up & Over Door
VW	Transporter T5/T6	2010	2022	PSC43	Barn/Split Door
VW	Caddy	2013	2020	PSC45	Barn Door & Tail Gate
Mercedes	Sprinter	2007	*Present Day	PSC14	-
Mercedes	Vito	2016	*Present Day	PSC54	Not Suitable For Split Doors
MAN	TGE	2016	*Present Day	PSC44	-
Citroën	Berlingo	2008	*Present Day	PSC22	-
Citroën	Dispatch	2016	*Present Day	PSC42	-
Citroën	Jumpy	2016	*Present Day	PSC42	-
Citroën	ë-Spacetourer	2017	*Present Day	PSC43	-
Citroën	Relay	2006	*Present Day	PSC30	-
Peugeot	Expert	2016	*Present Day	PSC42	-
Peugeot	Traveller	2019	*Present Day	PSC42	-
Peugeot	Boxer	2006	*Present Day	PSC30	-
Peugeot	Partner	2008	*Present Day	PSC22	-
Toyota	Pro Ace	2016	*Present Day	PSC42	-
Fiat	Ducato	2006	*Present Day	PSC30	-
Fiat	Talento	2016	*Present Day	PSC18	-
Renault	Trafic	2014	*Present Day	PSC18	-
Renault	Master	2014	*Present Day	PSC21	Not Suitable for High Top Vehicles
Vauxhall	Combo	2019	*Present Day	PSC42	-
Vauxhall	Vivaro	2014	2019	PSC18	-
Vauxhall	Vivaro	2019	*Present Day	PSC42	-
Vauxhall	Movano	2014	2020	PSC21	-
Nissan	NV300	2015	*Present Day	PSC18	-
Nissan	NV400	2011	*Present Day	PSC21	-
Iveco	Daily	2016	2022	PSC47	-

PLEASE NOTE: *Present Day - Was correct at the time of printing, please contact Parksafes Group prior to ordering to confirm current vehicle compatibility.

BRAKE LIGHT CAMERAS



PSC17

Universal Brake Light Camera with IR Lights

Brake Light D1 Resolution Camera with eight IR Lights.

Specification:

- Voltage: 12V DC
- Viewing Angle: 170°
- IP Rating: IP68
- NTSC / PAL Switchable
- Features: Parking Lines On / Off

- IR: 8 LED's (8-10m Distance)
- Mounting Methods: Brake Light
- Connection: 4 Pin
- Resolution: 976 (H) x 592 (V) TV Lines 580

- **Approvals & Certifications:** E-Mark, CE, UKCA



PSC17B

Universal Brake Light Camera

Universal bolt-on mounting Brake Light Camera with Integrated IR Lights.

Specification:

- Voltage: 12V DC
- Viewing Angle: 170°
- IP Rating: IP68
- NTSC / PAL Switchable
- Features: Parking lines, Switchable
- IR lights: 8

- Connection: 4pin
- Resolution: 580 TVL
- Extension Cable Length: 15m
- Power Consumption: 0.5 amp

- **Approvals & Certifications:** E-Mark, CE, UKCA



PSC33

Ford Transit Brake Light Camera With IR Lights

Brake Light D1 Resolution Camera with six IR Lights for:

- ✓ **Ford Transit 2014 - Present day**
- ✓ **Ford Transit Custom 2012 - Present day (Tail Gate Up and Over Door)**

Specification:

- Voltage: 12V DC
- Viewing Angle: 160°
- IP Rating: IP68
- NTSC / PAL Switchable
- IR: 6 LED's (8-10m Distance)

- Mounting Methods: Brake Light
- Connection: 4 Pin with Phono Adaptor
- Resolution: 976 (H) x 592 (V)
- Extension Cable Length: 10m

- **Approvals & Certifications:** E-Mark, CE, UKCA



PSC39

Ford Transit Custom Brake Light Camera With IR Lights

Brake Light D1 Resolution Camera with 10 IR Lights for:

- ✓ **Ford Transit Custom 2012 - Present (Barn/Split Door Bulb Version)**

Specification:

- Voltage: 12V DC
- Viewing Angle: 160°
- IP Rating: IP68
- NTSC / PAL Switchable
- Mounting Method: Brake Light

- Features: Parking Lines On/Off
- IR: 10 LED's (8-10m Distance)
- Connection: 4 Pin

- **Approvals & Certifications:** E Mark, CE, UKCA

BRAKE LIGHT CAMERAS

Ford Transit Custom Brake Light Camera

Brake Light D1 Resolution Camera with eight IR Lights for:

- ✓ **Ford Transit Custom 2016 - Present day** (Barn/Split Door LED Version)

Specification:

- Voltage: 12V DC
- Viewing Angle: 150°
- IP Rating: IP68
- NTSC / PAL Switchable
- Features: Parking Lines On/Off
- IR: 8 LED's (8-10m Distance)
- Mounting Methods: Brake Light
- Connection: 4 Pin Cam, 4 Pin to RCA Extension
- Resolution: 976 (H) x 592 (V) TV Line: 58
- Extension Cable Length: 10m
- Power Consumption: 0.3A
- Working temperature: -20°C ~ +70°C
- **Approvals & Certifications:** E Mark, CE, UKCA



PSC41

Ford Transit Connect Brake Light Camera

- ✓ **Ford Transit Connect Integrated Brake Light Camera, 2014 to Present.**

Specification:

- Voltage: 12V DC
- Viewing Angle: 160°
- IP Rating: IP68
- NTSC / PAL Switchable
- Features: Parking Lines On / Off
- 1/3" COLOR Super CMOS
- IR: 8 LED's (8-10m Distance)
- Mounting Method: Brake Light
- Connection: 4 Pin (4 pin - RCA Fly lead included)
- **Approvals & Certifications:** E Mark, CE, UKCA



PSC56

Mercedes Sprinter/VW Crafter Brake Light Camera

Brake Light D1 Resolution Camera with eight IR Lights for:

- ✓ **Mercedes Sprinter 2007 - Present Day**
- ✓ **VW Crafter 2006 - 2017**

Specification:

- Voltage: 12V DC
- PAL / NTSC Switchable
- Parking Guidelines: On / Off
- Image Sensor: 1/3" Colour Super CMOS
- Effective Pixels: 967 (H) x 592 (W)
- Resolution: TV Lines: 700
- IR LED: 8pcs
- IR Distance: 10M
- Waterproof: IP68
- **Approvals & Certifications:** E Mark, CE, UKCA



PSC14

Mercedes Vito Brake Light Camera

Brake Light D1 Resolution Camera for:

- ✓ **Mercedes Vito 2016 - Present day**

Specification:

- Voltage: 12V DC
- Viewing Angle: 170°
- IP Rating: IP69K
- NTSC / PAL Switchable
- Features: Parking Lines On / Off
- Mounting Method: Brake Light
- Image Sensor: 1/3" COLOR Super CMOS
- Camera Head: 20° Adjustment Up or Down
- Connection: 4 Pin Camera
- Resolution: 976 (H) x 592 (V) TV Line: 700
- **Approvals & Certifications:** E Mark, CE, UKCA



PSC54



Citroën, Vauxhall & Peugeot Partner Brake Light Camera

Brake Light D1 Resolution Camera for:

- ✓ Citroen Berlingo 2008 - Present day
- ✓ Peugeot Partner 2008 - Present day
- ✓ Vauxhall Combo 2008 - Present day

Specification:

- Voltage: 12V DC
- Viewing Angle: 170°
- IP Rating: IP69K
- NTSC / PAL Switchable
- Features: Parking Lines On / Off
- 1/3" COLOR Super CMOS

- Camera Head: Adjustable 20° Up or Down
- Mounting Method: Two Bolt Brake Light
- Minimum Illumination: 0.1 Lux (Day)

- **Approvals & Certifications:** E Mark, CE, UKCA



Citroën, Peugeot, Toyota & Vauxhall Brake Light Camera

- ✓ Citroen: Dispatch & Jumpy 2016 - Present day
- ✓ Peugeot: Expert 2016 - Present day
- ✓ Peugeot: Traveller 2019 - Present day
- ✓ Toyota: Pro-ace 2016 - Present day
- ✓ Vauxhall: Combo & Vivaro 2019 - Present day

Specification:

- Voltage: 12V DC
- Viewing Angle: 170°
- IP Rating: IP68
- NTSC / PAL Switchable
- Features: Parking Lines On / Off
- Mounting Methods: Brake Light
- Connection: 4 Pin to RCA

- Resolution: 728 (H) x 488 (V) TV Line: 580
- Extension Cable Length: 10m
- Power Consumption: 0.2A
- Working temperature: -20°C ~ +70°C

- **Approvals & Certifications:** E Mark, CE, UKCA



Peugeot, Citroën & Fiat Brake Light Camera

Brake light D1 Resolution Camera with 8 IR Lights for:

- ✓ Peugeot Boxer 2006 - Present day
- ✓ Citroën Relay 2006 - Present day
- ✓ Fiat Ducato 2006 - Present day

Specification:

- Voltage: 12V DC
- Viewing Angle: 160°
- IP Rating: IP68
- NTSC / PAL Switchable
- Features: Parking Lines On / Off
- 1/3" COLOR Super CMOS

- Effective Pixels: 976 (H) x 592 (V) TV Line: 700
- IR: 8 LED's (8-10m Distance)
- Mounting Method: Brake Light

- **Approvals & Certifications:** E Mark, CE, UKCA



VW Crafter & MAN TGE Brake Light Camera

Brake Light D1 Resolution Camera with eight IR Lights for:

- ✓ VW Crafter 2017- Present day (Fits to OEM Brake Light)
- ✓ MAN TGE 2016- Present day

Specification:

- Voltage: 12V DC
- Viewing Angle: 150°
- IP Rating: IP68
- NTSC / PAL Switchable
- Parking Lines On / Off
- IR: 8 LED's (8-10m Distance)

- Mounting Method: Brake Light
- Connection: 4 Pin (RCA Adaptor included)
- Resolution: 976 (H) x 592 (V) TV Line: 580

- **Approvals & Certifications:** E Mark, CE, UKCA

BRAKE LIGHT CAMERAS

VW Transporter T6 Brake Light Camera

D1 Resolution Brake Light Camera for:

- ✓ VW Transporter T6 (2016 - Current) Tailgate

Specification:

- Voltage: 12V DC
- Viewing Angle: 170°;
Adjustable 20° Up or Down
- IP Rating: IP69K
- Image Sensor: 1/3" Colour CMOS
- Mounting Method: Brake Light
- Connection: 4 pin micro
(4pin adaptor included)
- Minimum Illumination: 0.1 lux (Day)
- **Approvals & Certifications:**
E Mark, CE, UKCA



PSC46

VW Caddy Brake Light Camera

Brake Light D1 Resolution Camera for:

- ✓ Volkswagen Caddy 2013 to 2020 (Barn Door & Tailgate)

Specification:

- Voltage: 12V DC
- Viewing Angle: 170°
- IP Rating: IP69K
- NTSC / PAL Switchable
- Features: Parking Lines On / Off
- Mounting Method: Brake Light
- Connection: 4 Pin Camera, 4Pin to RCA Extension
- Resolution: 976 (H) x 592 (V) TV Lines: 700
- Minimum Illumination: 0.1 lux (Day)
- **Approvals & Certifications:**
E Mark, CE, UKCA



PSC45

VW and Citroën Brake Light Camera

Brake Light D1 Resolution Camera for:

- ✓ VW California - 2010 - 2022
- ✓ VW Transporter T5/T6 - 2010 - 2022
- ✓ Citroën Space Tourer - 2017 - 2022

Specification:

- Voltage: 12V DC
- Viewing Angle: 150°
- IP Rating: IP69K
- NTSC / PAL Switchable
- Sensor: 1/3 CMOS PC1058K
- Lux: 0.1 (No IR)
- Mounting Method: Brake Light
- Connection: 4 Pin (RCA Adaptor included)
- Resolution: 976 (H) x 592 (V) TV Line: 700
- Extension Cable Lengths: 10M
- **Approvals & Certifications:**
E Mark, CE, UKCA



PSC43

BRAKE LIGHT CAMERAS



Renault Master, Movano & Nissan NV400 Brake Light Camera

Brake Light D1 Resolution Camera for:

- ✓ Renault Master 2014 - Present day (Not Suitable for High top Vehicles)
- ✓ Vauxhall Movano 2014 - Present day
- ✓ Nissan NV400 2011 - Present day

Specification:

- Voltage: 12V DC
- Viewing Angle: 150°
- IP Rating: IP68
- NTSC / PAL Switchable
- Features: Parking Lines On / Off
- IR: 7 LED's (8-10m Distance)
- Mounting Method: Brake Light
- Connection: 4 Pin Camera, 4 Pin to RCA Converter
- Resolution: 976 (H) x 592 (V) TV Line: 580
- Extension Cable Length: 10m
- Approvals & Certifications: E Mark, CE, UKCA



Fiat, Renault, Vauxhall & Nissan Brake Light Camera

Brake Light D1 Resolution Camera with eight IR Lights for:

- ✓ Fiat Talento - 2016 to Present Day
- ✓ Renault Traffic - 2014 to Present Day
- ✓ Vauxhall Vivaro - 2014 to 2019
- ✓ Nissan NV300 - 2015 to Present Day

Specification:

- Voltage: 12V DC
- Viewing Angle: 150°
- IP Rating: IP68
- NTSC / PAL Switchable
- Features: Parking Lines On / Off
- IR: 8 LED's (8-10m Distance)
- Mounting Method: Brake light
- Connection: 4 Pin
- Resolution: 976 (H) x 592 (V) TV Lines: 580
- Extension Cable Lengths: 10m
- Approvals & Certifications: E Mark, CE, UKCA



Iveco Daily Brake Light Camera

Brake Light D1 Resolution Camera for:

- ✓ Iveco Daily 2016 - Present day

Specification:

- Voltage: 12V DC
- Viewing Angle: 170°
- IP Rating: IP68
- NTSC / PAL Switchable
- Features: Parking Lines On / Off
- Mounting Method: Brake Light
- Connection: Micro 4 Pin
- Resolution: 728 (H) x 488 (V) TV Lines: 580
- Approvals & Certifications: E Mark, CE, UKCA

DASHBOARD & MIRROR MONITORS

INCLUDES

- 9", 7", 5" & 4.3" **Dashboard Monitors**
- 7" & 4.3" **Mirror Monitors**
- **Quad** Dashboard Monitors
- **Waterproof** Monitors
- **Touch Screen** Monitors
- **OEM Mirror Monitor Adapters, Stalks & Fixing Kits**
- **Monitor Fitting Accessories**



YOUR SAFETY DRIVES US

DASHBOARD MONITORS



PS090



9" D1 4 Channel Monitor

4 Channel High Resolution Monitor for connecting up to 4 D1 resolution cameras with individual triggers and multiple split screen modes.

Specification:

- Voltage: 10 ~ 36V DC
- Screen Size: 9"
- Touch Screen: No
- NTSC / PAL Switchable
- No. Of Outputs: 4
- Four Triggers
- Key Features: Remote control, Multi screen views, Mirror mode
- Resolution: 1024 x RGB x 600
- Connection: 4 pin Aviation
- Cable Lengths: 2.3m
- Mounting Method: U type Bracket
- Built in speaker
- Power consumption: 0.7A
- Operating Temperature: -20°C ~ +70°C RH 90%
- **Dimensions:** 240mm (W) x 163mm (H) x 26mm (D)
- **Approvals & Certifications:** CE



PS027



7" D1 2 Channel Monitor

The D1 Universal Dash Mount Monitor has 2 Aviation 4pin inputs for Cameras.

Specification:

- Voltage: 9 ~ 36V DC
- 7" Screen
- Setting with buttons or IR remote control
- Video In: 2 Aviation 4 pin connections (2 Channels)
- Features: Parking Lines & Trigger Delay
- Resolution: 800 x 480 (RGB)
- Connection: 4 Pin
- Mounting Method: Fan bracket & U bracket
- Cable Length: 2m
- Power Consumption: 0.4 Amp
- Operating Temperature: -20°C to +70°C
- Audio: Yes
- **Dimensions:** 185mm (W) x 120mm (H) x 25mm (D)
- **Approvals & Certifications:** E Mark, CE, FCC



PS035



7" AHD Dashboard Monitor

The PS035 AHD universal dash mount monitor has 2 aviation 4 pin inputs for cameras. The monitor is commonly used as a visual aid for parking or with a DVR, the product has many features to assist the driver: Parking lines, trigger delay for indicator feed, image mirror and rotation.

Specification:

- Voltage: 9 ~ 36V DC
- 7" Screen
- NTSC / PAL Auto Switching
- Setting with Buttons or IR Remote Control
- Video In: 2 Aviation 4 pin connections (2 Channel)
- Features: Parking Lines & Trigger Delay
- Resolution: 1024 x 600 (RGB)
- Mounting Method: Fan bracket
- Connection: 4 Pin
- Cable length: 2m
- Power Consumption: 5 Watts
- Operating Temperature: -20°C to +70°C
- Audio: Yes
- **Dimensions:** 185 mm (W) x 120 mm (H) x 25 mm (D)
- **Approvals & Certifications:** E Mark, CE, FCC

DASHBOARD MONITORS

7" Quad 4 Channel FHD Monitor

Our newest Monitor brings FHD resolution & 4 Channel Input connectivity together into our range. Multiple viewing modes and trigger selections combined with a user friendly interface makes this a perfect high specification addition.

Specification:

- Voltage: 12 ~ 24V DC
- 7" Split Quad Screen (4 Channel)
- Inputs: 4 x 4pin Aviation; 1080P / 720p / CVBS Compatible
- Viewing Angle: U-180°; D-180°; L-180°; R-180°
- Contrast ratio: 500:1
Brightness: 500cd/m²
- Day / Night Screen Adjust: Auto
- PAL / NTSC: Auto
- TVS High /Low Voltage & Reverse Protection
- Anti Shock Pulse: 60V 3A
- Anti Vibration: 4G Anti Vibration Class
- Supplied with Fan Bracket
- **Dimensions:**
180mm x 121mm x 26mm



PS038FHDQUAD



7" Waterproof Dashboard Monitor

The PS030.1 Universal Waterproof Dashboard Monitor has 3 x inputs for Cameras.

Specification:

- Voltage: 10 ~ 36V DC
- 7" Waterproof Screen
- IP Rating: IP 69K
- Resolution: 800 (H) x 3 (RGB) x 480 (V)
- Input: 3 x 4 pin AVI
- Brightness: 450 cd / m²
- Contrast: 450:1
- Operating Temperature: -20°C to +70°C
- **Dimensions:**
187mm (W) x 140mm (H) x 32mm (D)
- **Approvals & Certifications:**
E Mark, CE, UKCA



PS030.1



7" Wireless Monitor

7" Wireless dashboard monitor

Specification:

- Voltage: 10 ~ 32V DC
- 7" Screen
- Resolution: 800 (H) x 3 (RGB) x 480 (V)
- NTSC / PAL
- Channels: 2
- Power Consumption: Max 6w
- Operating Temperature: -20°C to +70°C
- **Dimensions:**
315mm (W) x 175mm (D) x 60mm (H)
- **Approvals & Certifications:**
E Mark, CE, UKCA



PS033



DASHBOARD MONITORS



7" Full HD 1080p DVR Split Screen Monitor

The PS045T FHD 1080p Universal Dash Mount Monitor is for use with a DVR system.

Specification:

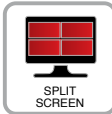
- Voltage: 12V DC
- 7" Colour Screen
- Remote Control: Yes
- Touch Screen: Yes
- Video In: VGA / AV DVR Input
- Resolution: FHD 1080p
- Mounting Method: Fan Bracket & U Bracket
- Connection: VGA / AV
- Operating Temperature: -20°C to +70°C

• Dimensions:

190mm (W) x 110mm (H) x 15mm (D)

• Approvals & Certifications:

E Mark, CE, UKCA



ON DEMAND

PLEASE NOTE: The PS045T Touch Screen Monitor is for use with the Parksafe On Demand range of DVR's ONLY.



7" HD Touch Screen Monitor (for use with the 360° camera system)

The PS046T HD universal dash mount Touch Screen monitor is for use with the 360° camera system.

Specifications:

- Voltage: 10 ~ 32V DC
- Screen Size: 7" Colour
- Split Screen: 1/4
- Touch Screen: Yes
- Remote Control: Yes
- Resolution: 1024 x 3 (RGB) x 600
- VGA Input: 1
- CVBS Input: 1
- Mounting Method: Fan Bracket & U Bracket
- Anti Vibration: 2.1G
- Power Consumption: Less than 5W
- Contrast: 700:1
- Brightness: 600cd/m²

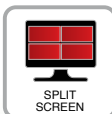
- Viewing Angle: U: 85/ D:85, R/L: 85/85
- Audio Output (Loudspeaker): 1W
- Operating Temperature: -20°C to +70°C, RH 90%

• Dimensions:

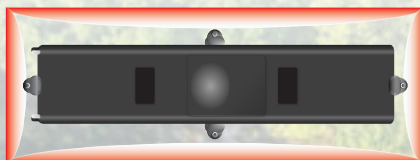
203mm (W) x 112mm (H) x 28mm (D)

• Approvals & Certifications:

E Mark, CE, FCC



ON DEMAND



PLEASE NOTE: The PS046T Touch Screen Monitor is for use with the Parksafe 360° Camera System.

DASHBOARD MONITORS

5" 3 Channel Monitor with U Bracket

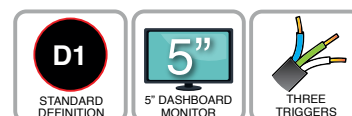
5" 3 Channel Monitor with Fan or U Bracket dashboard Fitting. It features 3 Camera inputs with trigger delay setting options.

Specification:

- Voltage: 12 ~ 24V DC
- PAL / NTSC Switchable
- 5" Widescreen
- Three Triggers
- Setting via Unit OR IR Remote Control
- Features: Channel Trigger Delay
- Resolution: 800 x 480 RGB
- Mounting Method: Fan Bracket & U Bracket
- Connection: 3 Aviation 4 pin connections (3 Channel)
- Power Consumption: 0.6 Amp
- Operating Temperature: -20°C to +70°C
- **Dimensions:** 135mm (W) x 95mm (H) x 25mm (D)
- **Approvals & Certifications:** E Mark, CE, FCC



PS050



4.3" Monitor with Mounting Bracket

The PS007 D1 Universal Dash Mount Monitor has 1 video input - Phono for a camera.

Specification:

- Voltage: 12V DC
- NTSC / PAL Auto Switching
- 4.3" Screen
- Setting: Buttons on the rear
- Video in: 1 x RCA connection (1 Channel)
- Resolution: 800 x 480 RGB
- Mounting Method: Dashboard Bracket
- Connection: RCA/Phono
- Power Consumption: 0.5A
- Audio: Yes
- Operating Temperature: -20°C to +70°C
- **Dimensions:** 115mm (W) x 90mm (H) x 45mm (D) including mount
- **Approvals & Certifications:** E Mark, CE, UKCA



PS007



MIRROR MONITORS

12.3" Sideview Mirror Monitor

Our 12.3" Mirror monitor when combined with Twin FHD side cameras form a complete sideview system, R10 & R46 Certified. It can also provide clear driving vision for drivers in weak light environment at night, strong light reflecting during the day, adverse weather conditions, and can improve driving safety. The screen recording facility is via SD card.

Specification:

- Voltage: 10 ~ 32V DC
- 12.3" Wide Screen
- 2 CH x 1080P Inputs
- Resolution: 1920 x 3(RGB) x 720
- Maximum cameras: 2
- Audio Input: No
- Max Brightness: 1000cd/m²
- Contrast: 1000:1
- IPS Screen
- Split Screen: Yes
- Anti Vibration: ISO 16750-3 (Max. 6.3G)
- Operating Temperature: -30°C ~ +70°C, RH90%
- Storage Temperature: -40°C ~ +80°C, RH90%
- Automatic Back Lighting for Automatic Brightness Control
- Full Function Remote Control
- Recording facility via SD card (Not supplied)
- **Approvals & Certifications:** E Mark



PS123MON



MIRROR MONITORS



7" OEM Slimline Mirror Monitor

The 7" Mirror Monitor is designed to replace an existing rear view mirror or can be fixed to the windscreen (If no rear view mirror is fitted) use a universal bonded windscreen mount/adaptor kit (PSWBP32).

Specification:

- Voltage: 12 ~ 24V DC
- 7" Screen
- Touch Screen: Yes
- Remote Control: Yes
- 2 Aviation 4 Pin Connections
- Resolution: 800p x 480p RGB
- Power Consumption: 0.2A

• Dimensions:

250mm (W) x 108mm (H) x 23mm (D)
(Excluding mounting stalk)

• Approvals & Certifications:

E Mark, CE, UKCA



PLEASE NOTE: A universal stalk is included but a vehicle specific adapter or universal fitting kit (PSWBP32) must be purchased.



7" AHD Clip On Slimline Mirror Monitor

The 7" Mirror Monitor is designed to clip on to an existing rear view mirror. With a touch screen and IR remote control the PS7006AHD is easy to set up and install.

Specification:

- Voltage: 12 ~ 24V DC
- 7" Screen
- Touch Screen: Yes
- Remote Control: Yes
- Inputs: 2 (D1 / AHD Compatible)
- Features: Parking lines, Trigger Delay & Mirror Function.
- Trigger Wire Input for Each Camera Feed

- Resolution: 1024 x 600
- Mounting Method: Clip on Mounting
- Connection: 2 x Male 4 pin Aviation with 2 x 4 Pin Fly Lead

• Approvals & Certifications:

E Mark, CE



PLEASE NOTE: A universal clip on mirror monitor must have an existing rear view mirror to clip it on too. If the vehicle doesn't have a rear view mirror fitted choose the PS7007 and PSWBP32 windscreen mounting kit.



4.3" Clip On Mirror Monitor

The 4.3" Mirror Monitor is designed to clip on to an existing rear view mirror. The PS5006.1 clip on mirror monitor is easy to set up and install.

Specification:

- Voltage: 12 ~ 24V DC
- 4.3" Screen
- NTSC / PAL Switchable
- Setting: Buttons
- 2 Aviation 4 Pin Connections
- Resolution: 480 x 272
- Mounting Method: Clip on Mounting & Roof Lining Stalk

- Connection: RCA
- Power Consumption: 0.2A
- Power Lead: 2.5m

• Dimensions:

258mm (W) x 85mm (H) x 20mm (D)

• Approvals & Certifications:

E Mark

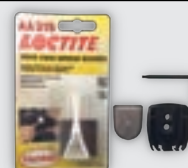


PLEASE NOTE: If the vehicle doesn't have a rear view mirror fitted and fitting to the roof lining is not an option, choose the PS5008 and our PSWBP32 windscreen mounting kit.

OPTIONAL Windscreen Mounting Kit

Universal Adhesive Fitting Kit For Mirror Monitors for vehicles with no windscreen button.

Code:	Description:	Pack Size
PSWBP32	Universal Adhesive Fitting Kit	1



MIRROR MONITORS

4.3" OEM Slim-line Mirror Monitor

The 4.3" Mirror Monitor is designed to replace an existing rear view mirror. The PS5008 OEM Mirror Monitor is easy to set up and install and features auto dimming.

Specification:

- Voltage: 12 ~ 24V DC
- 4.3" Screen
- NTSC / PAL Switchable
- 2 Aviation 4 Pin Connections
- Resolution 480 x 272
- Connection: 2 x RCA
- Power Consumption: 0.1A

• Dimensions:

270mm (W) x 92mm (H) x 45mm (D)
(Excluding stalk)

• Approvals & Certifications:

E Mark



PS5008



INCLUDES Universal Stalk For Mirror Monitors Requires Adaptor

Stalk suitable for PS5006, PS5008, PS7006 & PS7007 only.
This stalk is **INCLUDED** with the PS5008 / PS7007 / PS7012.

Code:	Description:	Pack Size
PSWBPSTALK	Universal Stalk For Mirror Monitors	1



4.3" Mirror Monitor, DVR and Front Camera View

4.3" Rear View Mirror Monitor with built in 1080P DVR and Front Camera View.

Specification:

- Voltage: 12V DC
- 4.3" Screen
- Touch Screen: Yes
- Remote Control: Yes
- Auto Screen Off
- Wide angle camera view 140°
- NTSC / PAL Switchable
- One Trigger
- Features: Built in Front Camera & DVR
- 1 x Video in by RCA (1 Channel)
- Resolution: 480p x 272p RGB
- Connection: 1 x RCA
- Power Consumption: 0.2A

DVR & Camera

- HD 1080P Recording Image
- Automatic Record on Power
- Supports up to a 32GB SD card
(Not included)
- G-Sensor

• Dimensions:

270mm (W) x 85mm (H) x 55mm (D)
(Excluding mounting stalk)

• Approvals & Certifications:

E Mark, CE, UKCA



PS7012

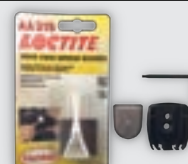


PLEASE NOTE: If the vehicle doesn't have a rear view mirror bracket fitted and fitting to the roof lining is not an option, choose our **PSWBP32** universal windscreen mounting kit.

OPTIONAL Windscreen Mounting Kit

Universal Adhesive Fitting Kit For Mirror Monitors for vehicles with no windscreen button.

Code:	Description:	Pack Size
PSWBP32	Universal Adhesive Fitting Kit	1



OEM MIRROR MONITOR ADAPTERS, STALKS & FIXING KITS

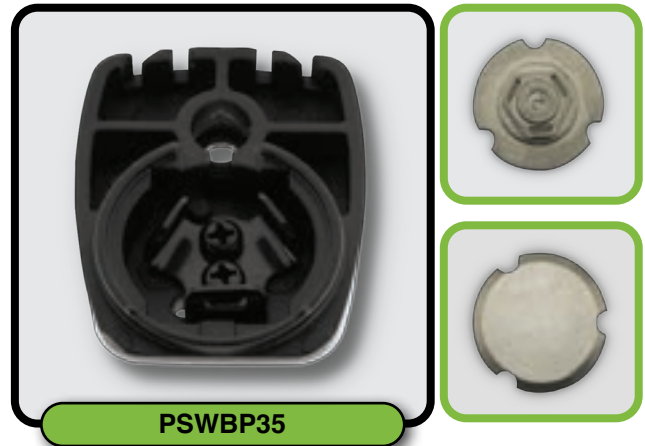
Choosing the correct adapter:

Simply look at the existing rear view mirror fitting bracket (Existing fitting bracket examples are shown next to each Parksafe adapter) to establish which adapter is suitable. Use the information below for guidance only always test that the adapter is suitable prior to full fitting.



PSWBP1

PSWBP1: Suitable for Ford Transit.



PSWBP35



PSWBP7



PSWBP46



PSWBP42



PSWBP78

PSWBP78: (Auto rain and lights) suitable for PS5008 / PS7012 or any mirror with pre-fitted stalk.

OEM MIRROR MONITOR ADAPTERS, STALKS & FIXING KITS

Choosing the correct adapter:

Simply look at the existing rear view mirror fitting bracket (Existing fitting bracket examples are shown next to each Parksafe adapter) to establish which adapter is suitable. Use the information below for guidance only always test that the adapter is suitable prior to full fitting.



PSWBP36: (Auto rain and lights) suitable for PS5008 / PS7012 or any mirror with pre-fitted stalk.

PSWBP77: (Auto rain and lights) suitable for PS5008 / PS7012 or any mirror with pre-fitted stalk.



MONITOR FITTING ACCESSORIES

Universal Stalk For Mirror Monitors

Stalk suitable for PS5006, PS5008, PS7006 & PS7007 only.

This stalk is **INCLUDED** with the following:

- ✓ PS7007
- ✓ PS5008
- ✓ PS7012



Code:	Description:
PSWBPSTALK	Universal Stalk For Mirror Monitors

Universal Stalk For Mirror Monitors

Universal adhesive fitting kit for vehicles with no windscreen button.

Suitable for one time application for:

- ✓ PS7007
- ✓ PS5008
- ✓ PS7012



Code:	Description:
PSWBP32	Universal Adhesive Fitting Kit For Mirror Monitors

Adapter for Land Rover Defender

Adapter for older Land Rover Defenders.

Suitable for use with the following mirror monitors only:

- ✓ PS5008
- ✓ PS7012



Code:	Description:
PSWBP60	Adapter for older Land Rover Defenders.

Banana Bracket for Dashboard Monitors

A robust alternative to the Fan or U Bracket that is fully adjustable.

Easy to fit, fully adjustable! Suitable for use with the following mirror monitors only:

- ✓ PS027
- ✓ PS035
- ✓ PS025
- ✓ PS030.1
- ✓ PS090
- ✓ PS045T
- ✓ PS046T



Code:	Description:
PSMB40	Banana Bracket for Dashboard Monitors

Optional Fan Bracket for Dashboard Monitors

Replacement Fan Bracket suitable for 9" and 7" Dashboard Monitors, easy fitting and allows the monitor to be adjusted to a positioned to suit each driver.

Code:	Description:
PSFANB	Optional Fan Bracket for Dashboard Monitors



CAMERA & MONITOR KITS



INCLUDES

- **Dashboard Monitor & Camera Kits**
- **Mirror Monitor & Camera Kits**
- **Wireless Camera & Monitor Kits**
- **Fork Lift Truck Camera & Monitor Kits**
- **Camera Interfaces**
- **Quick Connect Looms**
- **Camera & Monitor Accessories**



YOUR SAFETY DRIVES US

CAMERA & MONITOR KITS

12.3" Mirror Monitor & Twin Camera Kit



Parksafe Groups 12.3" Mirror Monitor combined with our Twin FHD Side Cameras form a COMPLETE sideview system.

Providing clear driving vision for drivers in weak light environment at night, strong light reflecting during the day, adverse weather conditions, ultimately improving driving safety.

Kit Code:	Description:
PS123MCAM1	12.3" Mirror Monitor & Twin Camera Kit
PS123MCAM2	12.3" Mirror Monitor & 2 Twin Camera Kit
Kit Contains:	Description:
PS123MON	12.3" Mirror Monitor
FHDTWINSIDE	Twin FHD Side Cameras



Upper Camera Specification:

- Resolution: FHD 1080p
- WDR (wide dynamic range)
- Waterproof: IP69K
- Meet the Angle requirements of Class II rear-view mirror

Lower Camera Specification:

- Resolution: FHD 1080p
- WDR (wide dynamic range)
- Waterproof: IP69K
- Meet the Angle requirements of Class IV rear-view mirror

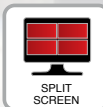


Specification: Monitor

- Voltage: 10 ~ 32V DC
- 12.3" Wide Screen
- Split Screen: Yes
- Viewing Angle Monitor: U:85° / D:85°, R/L: 85° / 85°
- 2 CH x 1080P Inputs
- Resolution: 1920 x 3(RGB) x 720

- Maximum cameras: 2

- Approvals & Certifications: E Mark



Heavy Duty Camera & 7" Monitor Kit

Heavy Duty Single Channel Camera available with 18 IR Lights and 7" Dashboard Monitor (Includes 20M 4 Pin Cable).

Kit Code:	Description:
PS027K11	Heavy Duty Camera & 7" Monitor Kit Black
PS027K11W	Heavy Duty Camera & 7" Monitor Kit White
Kit Contains:	Description:
PSK11 OR PSK11W	Heavy Duty Camera (available in Black OR White)
PS027	7" Dashboard Monitor



Specification: Camera



• Dimensions:

90mm (W) x 80mm (H) x 50mm (D)

- Voltage: 12V DC
- IP Rating: IP69K
- Viewing Angle: 120°
- PAL
- Connection: 4 Pin
- Resolution: 700 TV Line
- Extension Cable Length: 20m



PSK11 & PSK11W

Specification: Monitor



• Dimensions:

185 mm (W) x 120 mm (H) x 25 mm (D)

- Voltage: 9 ~ 36V DC
- 7" Screen
- Video In: 2 Aviation 4 pin connections (2 Channels)
- Resolution: 800 x 480 (RGB)
- Connection: 4 Pin
- Cable Length: 2M



PS027

Heavy Duty Camera & 5" Monitor Kit

Heavy Duty Single Channel Camera available with 18 IR Lights and 5" High Resolution Digital LCD with U Shaped Bracket.

Kit Code:	Description:
PS050K11	Heavy Duty Camera & 5" Monitor Kit Black
PS050K11W	Heavy Duty Camera & 5" Monitor Kit White
Kit Contains:	Description:
PSK11 OR PSK11W	Heavy Duty Camera (available in Black OR White)
PS050	5" 3 Channel Monitor with U Bracket



Specification: Camera



• Dimensions:

90mm (W) x 80mm (H) x 50mm (D)

- Voltage: 12V DC
- IP Rating: IP69K
- Viewing Angle: 120°
- PAL
- Connection: 4 Pin
- Resolution: 700 TV Line
- Extension Cable Length: 20m



PSK11 & PSK11W

Specification: Monitor



Dimensions:

130mm (W) x 95mm (H) x 25mm (D)

- Voltage: 12 ~ 24V DC
- 5" Widescreen
- Video In: 3 Aviation 4 pin connections (3 Channel)
- Resolution: 800 x 480 (RGB)



PS050

Wireless Camera & 7" Monitor Kit



The Parksafe Wireless Heavy Duty Camera Kit comes with a 7" Dashboard Monitor and U shape bracket along with a Heavy Duty Wireless Camera.

Kit Code:	Description:
PS033K12	Wireless Camera & 7" Monitor Kit

Kit Contains:	Description:
PSK12	Wireless Heavy Duty Rear Camera
PS033	Wireless 7" Dashboard Monitor



PSK12

Specification: Camera



- Dimensions: 85mm (W) x 70mm (H) x 90mm (L)

- Voltage: 12 ~ 24V DC
- IP Rating: IP68
- Viewing angle 120°
- PAL
- Connection: Wireless
- Resolution: 700 TV Line



PS033

Specification: Monitor



- Voltage: 10 ~ 32V DC
- 7" LCD Screen
- PAL / NTSC Switchable
- Resolution: 800 x 3 x 480

Heavy Duty Pal Camera & 7" Clip on Mirror Monitor



Heavy Duty Single Channel Rear Camera available with 18 IR Lights and 7" Mirror Monitor - designed to clip on to an existing rear view mirror.

Kit Code:	Camera Colour:
PS7006K11	Heavy Duty Camera & 7" Clip on Mirror Monitor Black
PS7006K11W	Heavy Duty Camera & 7" Clip on Mirror Monitor White

Kit Contains:	Description:
PSK11 OR PSK11W	Heavy Duty Camera (available in Black OR White)
PS7006AHD	7" AHD Clip On Slimline Mirror Monitor



PSK11 & PSK11W

Specification: Camera



- Dimensions: 90mm (W) x 80mm (H) x 50mm (D)

- Voltage: 12V DC
- IP Rating: IP69K
- Viewing Angle: 120°
- PAL
- Connection: 4 Pin
- Resolution: 700 TV Line



PS7006AHD

Specification: Mirror Monitor



- Voltage: 12 ~ 24V DC
- 7" AHD Screen
- Touch Screen: Yes
- Inputs: 2 (D1 / AHD)
- Resolution: 1024 x 600 RGB Compatible

CAMERA & MONITOR KITS

Strip Bar Camera & 7" Clip On Mirror Monitor

Universal Strip Bar Camera, D1 Resolution with IR illumination and parking lines. Plus 7" Mirror Monitor, designed to clip on to an existing rear view mirror.

Kit Code:	Camera Colour:
PS7006C23	Strip Bar Camera & 7" Clip On Mirror Monitor Black
PS7006C23W	Strip Bar Camera & 7" Clip On Mirror Monitor White

Kit Contains:	Description:
PSC23 OR PSC23W	Universal Strip Bar with IR Lights (available in Black OR White)
PS7006AHD	7" AHD Clip On Slimline Mirror Monitor



Specification: Camera

- Voltage: 12 ~ 24V DC
- Viewing Angle: 160°
- IP Rating: IP68
- PAL / NTSC Switchable
- Features: Parking Lines & Mirror Switchable
- IR Lights: 8 LED's
- Connection: Phono
- Resolution: 728 (H) x 488 (V) TV Line: 580
- Power Consumption: 0.2A



Specification: Monitor

- Voltage: 12 ~ 24V DC
- 7" Screen
- Touch Screen: Yes
- Inputs: 2 (D1 / AHD Compatible)
- Features: Parking lines, Trigger Delay & Mirror Function.
- Resolution: 1024 x 600
- Mounting Method: Clip on Mounting
- Connection: 2 x Male 4 pin Aviation with 2 x 4 Pin Fly Lead



A universal clip on mirror monitor must have an existing rear view mirror to clip it on too. If the vehicle doesn't have a rear view mirror fitted choose the **PS7007** and **PSWBP32** windscreen mounting kit.



QUICK LOOK CAMERA INTERFACE LIST

Discover Parksafe's range of reliable Camera Interfaces, which provide easy connectivity solutions with existing OEM equipment.

Vehicle Make	Vehicle Model Year	Radio Type	Parksafe Interface Product Code	
Ford	Transit Custom > 2019	Sync 3	*CAMINTERSYNC3	
Ford	Transit Custom Connect 2019 >	Sync 2.5	CAMINTER14F	
Ford	Transit Custom 2022 >	Sync 4	CAMINTER 10	
Volvo	FH4 FM4	Connected Infotainment System	CAMINTER7	
Mercedes	Sprinter Actros Axor	7" AND 10.2" MBux	CAMINTER4	
Mercedes	Sprinter	7" MBux	CAMINTER2	
Mercedes	Vito Sprinter	Audio 15	VITOPRO	
Renault	Master	Media NAV	CAMINTER5	
Dacia	Duster			
Fiat	DV	Navi50		
Vauxhall	Movano			
Vauxhall	Vivaro	NAC, RCC 7" AND 8" Info System	CAMINTER8	
Citroen	Dispatch			
Peugeot	Partner			
Toyota	Proace			
Scania	NGT	Harman Unit without Camera Prep	CAMINTER3	
MAN	TGS TGM TGL			
VW				
Seat	Multiple	MIB / MIB2 5.8", 6.5" 8" AND 9.2"	*CAMINTER9	
Skoda				

PLEASE NOTE: *Additional programming software and a dongle is required. This information was correct at the time of printing, please contact Parksafe Group prior to ordering to confirm current vehicle compatibility.

CAMERA INTERFACES

FORD Sync 3 Brake Light Camera Interface

Ford Sync 3 camera interface to serve as an image transmission interface from camera to an existing screen/monitor.

Suitable for use with the **PSOBD2.1** - FORD Scan OBD2 programming tool. (Sold separately)



CAMINTERSYNC3

FORD Sync 2.5 Brake Light Camera Interface

Ford Sync 2.5, 2020 onwards camera interface to serve as an image transmission interface from camera to an existing screen/monitor.



CAMINTER14F

FORD SYNC4 Camera Interface

Ford Sync 4 Infotainment System with either 12" or 13.2" screens. This allows the addition of a reverse camera with automatic switching, a front camera and two other CVBS video inputs (E.g.. USB-Player, DVB-T Tuner)



CAMINTER10

Volvo FM & FH Touch Screen Interface

Volvo FM & FH touch screen interface uses the existing OEM screen in the vehicle so an additional monitor is not required.



CAMINTER7

CAMERA INTERFACES



CAMINTER4

Mercedes MBUX Camera Interfaces

Mercedes Sprinter & Actros V5 camera interface to serve as an image transmission interface from camera to an existing screen/monitor.

- MBUX System 10.25" & 7" Versions
- Four Camera Inputs NTSC Cameras Only



CAMINTER2

Mercedes Sprinter Brake Light Camera Interface

Mercedes Sprinter camera interface to serve as an image transmission interface from camera to an existing screen/monitor.

- Compatible with 7" MBUX System
- NTSC / PAL Compatible
- 7" MBUX Screen Only (Non Navigation)



VITOPRO

Mercedes Vito Pro Brake Light Camera Interface

Vito Pro camera interface Audio 15 radio to serve as an image transmission interface from camera to an existing screen/monitor.

Plug & Play Quad harness for programming Fakra interface for NTSC video input.



CAMINTER5

Renault, Dacia, Vauxhall & Fiat LGV Camera Interface

This interface will allow you to connect a reversing camera into the original manufacturer fitted radio head unit. The OBD programming tool supplied with the kit is to activate the screen to accept the after market camera.

- Single use OBD Programming Tool
- Compatible with NTSC cameras only
- Media Nav / Navi 50 System



CAMERA INTERFACES

Vauxhall, Citroen, Peugeot & Toyota Camera Interface

This Parksafe screen interface will allow you to connect both Front & Rear view cameras plus 2 other devices into the original manufacturers infotainment system. Compatible with Vauxhall, Citroen, Peugeot & Toyota Vehicles with NAC or RCC infotainment and a 7" or 8" monitor

- Multi-way Media Module Plug & Play Fully Populated Harness
- 4 Yellow Phono Camera Inputs
- CANbus Reverse Gear Trigger
- Trigger Button for Camera Option
- Universal Power & CANbus Connections
- Dual Fakra Video Cable
- Compatible with PAL / NTSC Cameras



CAMINTER8

PLEASE NOTE: The radio is only compatible with CVBS cameras that are NTSC format.

Scania & MAN OE Brake Light Camera Interface

Scania and MAN OE screen interface camera interface to serve as an image transmission interface from camera to an existing screen/monitor.

- 4 Pin Male Aviation
- 4 Pin Female Fakra HSD
- 1 Cable Per Channel
- Vehicle with No Camera Prep

Programming is required by the dealer.



CAMINTER3

Volkswagen & MAN Camera Interface

Volkswagen and MAN OE camera interface to fit into the rear of the media unit.

Programming is required either by the dealer or diagnostics tool.



CAMINTER9

IROAD

UNITED KINGDOM

PREMIUM DASH CAMERAS

WWW.IROADUK.COM

Renowned for producing highly reliable, high-performing dash cameras. The IROAD Dash Camera Series offers the ultimate in sleek design and technology at an affordable price.

Using a combination of superior software and hardware to produce crystal clear, bright, and high-quality footage, even in low light. **IROAD** Dash Cameras are equipped with built-in GPS, allowing you to monitor the exact location of your vehicle. The Advanced Driver Assistance System (ADAS), which provides audio-voice alerts for Lane Departure, Front Collision and Front Vehicle Departure to the driver, when the vehicle starts drifting from its lane, or when there is a risk of an imminent crash. Don't wait until you've had an accident. Invest in an **IROAD** Dash Camera today, with confidence!



CLICK HERE
TUTORIAL & SET UP
LINKS

IROAD DASH CAM FX1
FRONT FACING CAMERA | QUALITY 1080p



IROADFX1

- Wi-Fi
- Built in GPS
- IOS & Android App
- Parking Modes: 48 Hours Recording Time
- 32GB SD Card **INCLUDED**: Up to 256GB
- **4 x MORE** Recording Time (compared to other cameras)
- Format Free

 FRONT VEHICLE DEPARTURE WARNING	 FORWARD COLLISION WARNING SYSTEM	 LANE DEPARTURE WARNING SYSTEM	 BUILT IN GPS
 1080p FULL HD	 NIGHT VISION	 140° WIDE ANGLE LENS	 ENERGY SAVING 2.4W

IROAD DASH CAM FX2
FRONT & REAR CAMERA | QUALITY 1080p



IROADFX2

- Wi-Fi
- Built in GPS
- IOS & Android App
- Parking Modes: 48 Hours Recording Time
- 64GB SD Card **INCLUDED**: Up to 256GB
- **4 x MORE** Recording Time (compared to other cameras)
- Format Free

 FRONT VEHICLE DEPARTURE WARNING	 FORWARD COLLISION WARNING SYSTEM	 LANE DEPARTURE WARNING SYSTEM	 BUILT IN GPS
 1080p FULL HD	 NIGHT VISION	 140° WIDE ANGLE LENS	 ENERGY SAVING 2.4W

IROAD DASH CAM FX2IR
FRONT & REAR IR FACING CAMERA | QUALITY 1080p



IROADFX2IR

- Wi-Fi
- Built in GPS
- IOS & Android App
- Parking Modes: 48 Hours Recording Time
- 64GB SD Card **INCLUDED**: Up to 256GB
- **4 x MORE** Recording Time (compared to other cameras)
- Format Free

IROAD MULTI-COVER TAMPERPROOF CASE



IROADTAMPER

The **IROAD** Multi Cover Tamper proof case keep cables neat, prevents damage, discourages access to the cables of the Dash Camera and protects the Micro SD card slot, so that video files cannot be damaged or deleted.

- Compatible with all FX & QX IROAD series dash cameras.

COMING SOON!

3 CHANNEL CLOUD DASH CAM

IROAD DASH CAM X30



The IROAD X30 captures 1440p QHD front and 1080p FHD rear recording, providing FOUR TIMES MORE clarity than standard HD resolution.

Its 2560 x 1400p resolutions with 5.0M pixels and Sony IMX335 sensor delivers clearer and sharper images with significantly enhanced video quality, even in low-light conditions, and with little-to-no over-exposure across the entire image, makes it an excellent choice for day and night use.

IROAD DASH CAM X30
QHD FRONT CAMERA



IROADX30-1CH

- Real HDR
- Wi-Fi
- Built in GPS
- IOS & Android App
- Suitable for various Vehicle types
- Format Free

FRONT VEHICLE DEPARTURE WARNING	FORWARD COLLISION WARNING SYSTEM	LANE DEPARTURE WARNING SYSTEM	BUILT IN GPS
1440p QHD	CLOUD CONNECTIVITY	155° WIDE ANGLE LENS	ENERGY SAVING 2.4W

IROAD DASH CAM X30
QHD FRONT & 1080P REAR CAMERA



IROADX30-2CHFR

- Real HDR
- Wi-Fi
- Built in GPS
- IOS & Android App
- Suitable for various Vehicle types
- Format Free

FRONT VEHICLE DEPARTURE WARNING	FORWARD COLLISION WARNING SYSTEM	LANE DEPARTURE WARNING SYSTEM	BUILT IN GPS
1440p QHD	CLOUD CONNECTIVITY	155° WIDE ANGLE LENS	ENERGY SAVING 2.4W

FOR MORE INFORMATION & PRODUCTS PLEASE EMAIL: INFO@IROADUK.COM

IROAD IR (INTERIOR IR) CAMERA
INTERIOR IR CAMERA | **QUALITY 1080p**



IROADX30-1RC-6

- Full HD 1080p Interior camera
- 2.0 megapixels Sensor

IROAD WATERPROOF CAMERA
EXTERNAL CAMERA | **QUALITY 1080p**



IROADX30-EXC

- Full HD 1080p External camera
- Waterproof: IP69K Rating

IROAD ACCESSORIES

IROAD POWER PACK PRO12

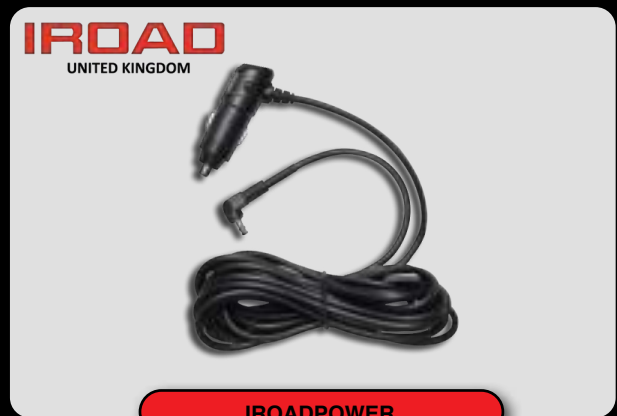


POWERPRO12

The **IROAD** Powerpack Pro, is designed with LiFePO4 (Lithium Iron Phosphate), which applies a quick charging tech that affects no life span of the battery. So, it can be used up to 56 hours with 90 minutes charging only.

- 1200mAh

IROAD CIGAR JACK TYPE POWER CABLE



IROADPOWER

The cable to run the dash cam on the lighter port is from the original IROAD.

- Compatible with all FX & QX IROAD series dash cameras.

IROAD OBDII POWER CABLE ICE VEHICLES



IROADOBDice

Transfer Kit Includes:

- 1 x Hardwire Kit
- 1 x Rear Camera Cable
- 1 x Front Cradle
- 2 x 3m Sticker Pads

IROAD OBDII POWER CABLE ELECTRIC VEHICLES



IROADOBDEv

The **IROAD** Power OBD-II cable can simply be plugged into the OBD terminal to enable parking recording with **IROAD** dash cams.

- LED
- Set Recording Mode (S: Driving Mode Only / P: Driving & Parking Mode)
- Overcurrent Cut-Off

Installation is quick and easy with no additional tooling required.

IROAD TRANSFER KIT



IROADTRANSFER

- Supports Stop & Go Technology
- Compatible with Hybrid / Non-Electric Vehicles

Micro SD Cards Range

IROAD Micro SD cards are available in a range of sizes note the Dash Cam's SD card max capacity, prior to ordering. We recommend replacing your Dash Cam's SD card every 6-12 months for optimum performance.



Code:	Micro SD Cards:
PSIROADMSD64	64GB SD Card
PSIROADMSD128	128GB SD Card
PSIROADMSD256	256GB SD Card

PARKING SENSORS & ACCESSORIES

INCLUDES

- **Front & Rear Sensors**
- **Wireless** Parking Sensors
- Underhung **Rubber Sensors**
- Flush Fit & **Angled Head Sensors**
- **Buzzer** or **Display**
- **Standard Colour** Options



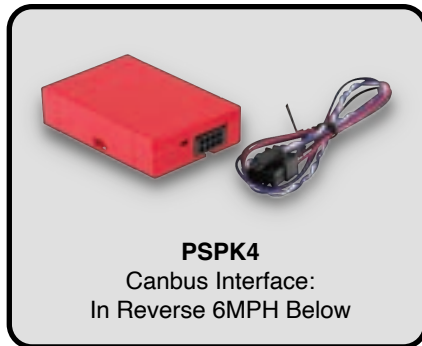
YOUR SAFETY DRIVES US

REAR PARKING SENSOR KITS



PS540

Standard Colours:



PSPK4
Canbus Interface:
In Reverse 6MPH Below

Rear Sensor Kit 19mm Heads

Set of four rear parking sensor with audible buzzer to alert the driver of obstacles when reversing.

Specification:

- 12 ~ 24V DC, 20-200mA
- 4 x 19mm Paintable Sensors
- Tow Bar Ignore Function
- Audible Buzzer
- Sensor Installation Height Adjustable
- Power Cable 0.8m
- Sensor Cable 2.5m
- Buzzer Cable 2.5m
- Detection Range 0.2 – 1.5m
- Frequency: 40KHz
- Operating Temperature: -30°C ~ +70°C

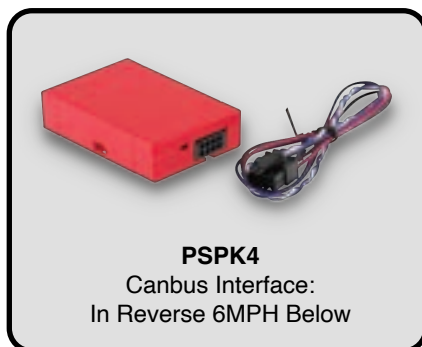
(Vertical mounting surface, potentiometer minimum setting, actual value will vary with increased vehicle load) Compatible Optional display: **PS62 / PS63 / PS64**.

Code:	Description:
PS540	4 Sensor Kit Gloss Black 19mm Flat Heads
PS540M	4 Sensor Kit Matt Black 19mm Flat Heads
PS540S	4 Sensor Kit Silver 19mm Flat Heads
PS540W	4 Sensor Kit White 19mm Flat Heads



PS740

Standard Colours:



PSPK4
Canbus Interface:
In Reverse 6MPH Below

Rear Sensor Kit with Angled Heads

Rear 4 eye parking sensor kit with buzz. (Including selected angled collars)

Specification:

- 12 ~ 24V DC, 20-200mA
- 18.5mm Paintable Sensors
- Tow Bar Ignore Function
- Audible Buzzer
- Sensor Installation Height Adjustable
- Angled Heads 6°, 10° & 13° degree
- Power Cable 0.8m
- Sensor Cable 2.5m
- Buzzer Cable 2.5m
- Detection Range 0.2 – 1.5m
- Frequency 40KHz
- Operating Temperature: -30°C – +70°C

Code:	Description:
PS740	4 Sensor Kit Gloss Black 18.5mm Angled Collar Heads
PS740M	4 Sensor Kit Matt Black 18.5mm Angled Collar Heads
PS740S	4 Sensor Kit Silver 18.5mm Angled Collar Heads
PS740W	4 Sensor Kit White 18.5mm Angled Collar Heads

REAR PARKING SENSOR KITS

Flush Mount Rear Parking Sensors

Flush fitting Rear parking sensors to help alleviate the problem of avoiding obstacles that may be hidden in the drivers rear blind spot.

Specification:

- Voltage: 12 ~ 24V DC
- 14.5mm Flush Fit Sensors
- Tow Bar Ignore Function
- 4 Sensor Mounts
- 4 x 3m Adhesive Pads
- Audible Buzzer (2 positions)
- Sensor Installation Height Adjustable
- Current Draw: 20 ~ 200mA
- Power Cable: 800mm
- Sensor Cables: 2.5m
- Buzzer Cable length: 2.5m
- Detection Range: 0.2M ~ 1.5m
- Frequency: 40Khz
- Operating Temperature: -30°C ~ +70°C

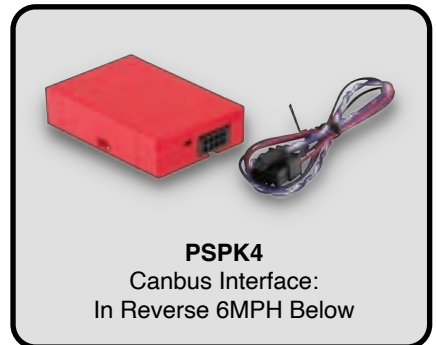


PS940M

Standard Colours:



Code:	Description:
PS940	Rear Sensor Kit Gloss Black 14.5mm F/Mount with Buzzer
PS940M	Rear Sensor Kit Matt Black 14.5mm F/Mount with Buzzer
PSDRILL	Re-usable 14.5mm Drill Bit



PSPK4
Canbus Interface:
In Reverse 6MPH Below

Commercial Rear Sensor Kit 18.8mm

Commercial Rear Sensor Kit with under hung brackets and buzzer.

Specification:

- Voltage: 12 ~ 24V DC
- IP Rating: IP67
- 18.8mm Low Profile Angled Sensor/ Heads
- Tow Bar Ignore Function
- 4 x Rubber Sensor Heads
- 4 x Underhung Brackets
- A & D Distance Reduction
- Sensor Installation Height Adjustable
- Audible Buzzer:
High: 108+-8dB Low: 80+-10dB
- Buzzer Cable Length: 2.5m
- Power Cable: 1m with fuse
- Sensor Cable: 2.5m
- Detection Range: 0.2 – 1.5m
- Frequency: 40KHz
- Operating Temperature: -20°C ~ +80°C



PS1140

Standard Colours:



Code:	Description:
PS1140	Commercial Angled 18.8mm Heads with Underhung Brackets
PS1140DK	Double Knock Parking Sensors



PSPK4
Canbus Interface:
In Reverse 6MPH Below

REAR PARKING SENSOR KITS



PS114.1

Standard Colours:



Commercial Wireless Rear Sensor Kit

Wireless rear parking sensor system for commercial vehicles with under hung brackets and LED display.

Specification:

- Voltage: 9 ~ 35V DC
- IP Rating: IP68
- Detection Range: up to 2.5m
- Operating Current: 150mA
- RF Frequency: 433 Mhz
- 2.4m (Male to male) Sensor Cable(s)
- Display Cable: 1.5m
- Sensor Mounting Height: 40cm ~ 60 cm
- Detection Angle: Vertical 60° & Horizontal 120°
- Frequency: 39.3 ~ 40.7 Khz
- Operating Temperature: -20°C ~ +80°C

Code:	Description:
PS114.1	Commercial Wireless Angled 18.8mm Heads with Underhung Brackets and Display



PS546

Standard Colours:



Front Parking Sensors with Buzzer or Display

Front Parking Sensors aid the driver in identifying obstacles that may be present in their blind spots. Tact switch will either cancel or deactivate sensors.

Specification:

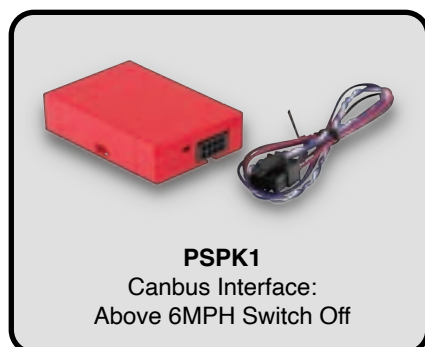
- Voltage: 12 ~ 24V DC, 20-200mA
- 19mm Paintable Sensors
- Tow Bar Ignore Function
- Sensor Height Adjustable by Control port
- Power Cable: 0.8m
- Sensor Cable: 5m
- Display Cable: 8m
- Detection Range: 0.2 – 1.5m
- Operating Temperature: -30°C ~ +70°C

Display:

- **Red, Amber & Green** with Numerical Countdown
- Multiple Views
- Front or Rear Mounting
- Can Be Muted
- Wiring Included
- Multiple Covers to blend in with interior compatible with all reverse sensors

Code:	Description with Buzzer:
PS546BUZZ	Front Sensor Kit Gloss Black 18.5mm - Buzzer
PS546MBUZZ	Front Sensor Kit Matt Black 18.5mm - Buzzer
PS546SBUZZ	Front Sensor Kit Silver 18.5mm - Buzzer
PS546WBUZZ	Front Sensor Kit White 18.5mm - Buzzer

Code:	Description with Display:
PS546	Front Sensor Kit Gloss Black 18.5mm - Display
PS546M	Front Sensor Kit Matt Black 18.5mm - Display
PS546S	Front Sensor Kit Silver 18.5mm - Display
PS546W	Front Sensor Kit White 18.5mm - Display



PSPK1

Canbus Interface:
Above 6MPH Switch Off

FRONT PARKING SENSOR KITS

Front Sensor Kit with Angled Collars

Set of four front parking sensors with either LED Display or Buzzer to alert driver of obstacles that may be in their blind spots when manoeuvring. Includes a set of angled collars to fit varying angles of installation.

Specification:

- Voltage: 12 ~ 24V DC, 20-200m
- 18.5mm Paintable Sensors
- Tow Bar Ignore Function
- Angled Heads; 6°, 10° & 13°
- LED Display
- Sensor Height Adjustable by Control port
- Detection Range 0.2 – 1.5m
- Power Cable: 0.8m
- Sensor Cable: 2.5m
- LED Display Cable: 6m
- Height Adjustment Range: 100m Up - 100mm Down
- Frequency: 40KHz
- Operating Temperature: -30°C ~ +70°C

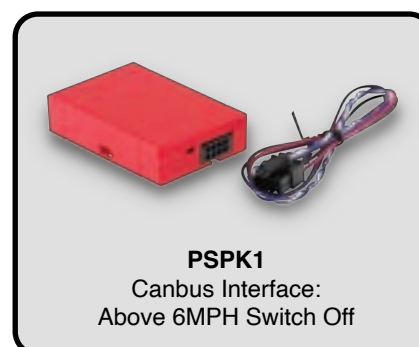
Code:	Description with Buzzer:
PS746BUZZ	4 Sensor Kit Gloss Black 18.5mm - Buzzer
PS746MBUZZ	4 Sensor Kit Matt Black 18.5mm - Buzzer
PS746SBUZZ	4 Sensor Kit Silver 18.5mm - Buzzer
PS746WBUZZ	4 Sensor Kit White 18.5mm - Buzzer

Code:	Description with Display:
PS746	4 Sensor Kit Gloss Black 18.5mm - Display
PS746M	4 Sensor Kit Matt Black 18.5mm - Display
PS746S	4 Sensor Kit Silver 18.5mm - Display
PS746W	4 Sensor Kit White 18.5mm - Display



PS746

Standard Colours:



PSPK1

Canbus Interface:
Above 6MPH Switch Off

Flush Mount Front Parking Sensors

Flush fitting front parking sensors to help alleviate the problem of avoiding obstacles that may be hidden in the drivers blind spot.

Specification:

- Voltage: 12 ~ 24V DC
- 14.5mm Flush Fit Sensors
- 4 Sensor Mounts
- 4 x 3m Adhesive Pads
- Tow Bar Ignore Function
- LED Display
- Height Adjustable Sensor Installation
- Current Draw: 20 ~ 200mA

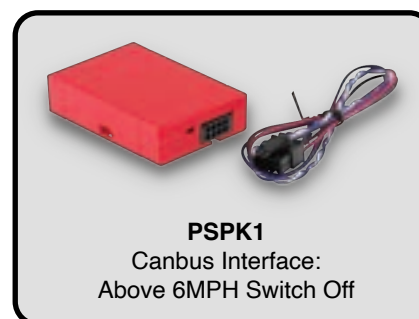
Code:	Description:
PS946MBUZZ	Front Sensor Kit Matt Black 14.5mm F/Mount with Buzzer
PS946M	Front Sensor Kit Matt Black 14.5mm F/Mount with Display
PSDRILL	Re-usable 14.5mm Drill Bit

(PSDRILL - 14.5mm Drill Bit is required to be ordered for fitting)



PS946M

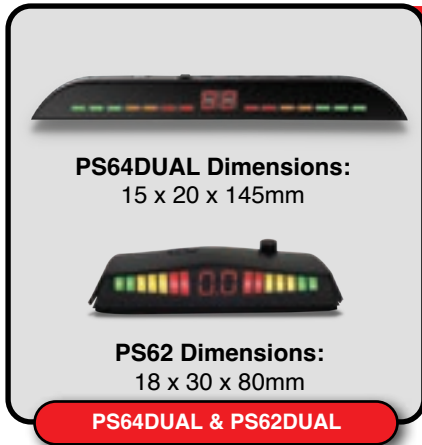
Standard Colours:



PSPK1

Canbus Interface:
Above 6MPH Switch Off

PARKING SENSOR ACCESSORIES



Rear or Front Parking Sensor Display & Buzzer

- 8m Cable LED Display
- 3m Pad, Plastic Mount
- 2 x Screws for Display

Code:	Description:
PS64DUAL	Slimline Front or Rear Parking Sensor LED Display
PS64	Slimline Rear Parking Sensor LED Display
PS62	Rear Parking Sensor LED Display
PS62DUAL	Front or Rear Parking Sensor LED Display
PSBUZZ01	1 x Replacement Buzzer & Hi/Low Tone Pitch



Parking Sensor, Buzzer & Display Extension Leads

We offer a range of parking sensor, display and buzzer extension leads.

Code:	Description:
PS2MSEN	2.1M Parking Sensor Extension Lead
PS2.5MSEN	2.5M Parking Sensor Extension Lead (PS1140 Only)
PS3MSEN	3M Parking Sensor Extension Lead
PS4.5MSEN	4.5M Parking Sensor Extension Lead (PS1140 Only)
PS5MSEN	5M Parking Sensor Extension Lead
PSFKIT1	2.1M P Sensor extension leads x 4 with Red LED Rocker Switch
PSFKIT1-PS	2.1M P Sensor extension leads x 4 with P Green LED Rocker Switch
PS8MDIS	6M Display Extension Lead
PS10MBUZ	10M Buzzer Extension Lead



Parking Sensor Die Cutting Bit

The PS940 parking sensor range requires a die cutting bit that is reusable but not included in the PS940 kit box. Hole cutters are supplied with all other parking sensor kits.

Code:	Description:
PSDRILL	PS940 Range Parking Sensor Die Cutter 16.5mm
PSDRILL18	PS740 Parking Sensor Die Cutter 18.3/18.5mm
PSDRILL19	PS540 Parking Sensor Die Cutter 19mm



Replacement Parking Sensor Control Box

Replacement parking sensor control box suitable for use with:

Rear Sensors:

- PS540
- PS740
- PS940

Front Sensors:

- PS546
- PS746
- PS946

Code:	Description:
PSBOX540	Parking Sensor Rear Control Box
PSBOXPOWER	Power Cable for PSBOX540
PS746BOX	Parking Sensor Front Control Box
PSBOXDK	Parking Sensor Double Knock Control Box

POWER INVERTERS

INCLUDES

- **Pure Sine Wave** Power Inverters
- **1000W to 3000W** Power Outputs
- **12V, 24V & 110V** Options
- **2 UK / EURO** or 110V Sockets
- **Over Load & Temperature Protection**
- **Battery to Battery** Chargers



YOUR SAFETY DRIVES US

PURE SINE WAVE POWER INVERTERS



PS2001-1K

1000W Pure Sine Wave 12V Power Inverter

Pure Sine wave 1000W Power Inverter with a 2m trailing UK & EURO Socket and Remote Control.

Specification:

- Input Voltage: 12V DC
- Output Voltage: 200 ~ 240V AC
- Output Frequency: 50Hz \pm 1%
- Overload Shutdown: YES DC 15V \pm 0.5V
- Over Temperature Protection: <75 degrees
- Output Power: 1000W
- Peak Power: 2000W
- Max Constant Power Start: 1200W for 10 seconds
- No Load Consumption: <0.5A
- Converting Max Efficiency: 90% (full loading) / 95% (1/3 loading)
- Radiator Fan: YES Temperature Controlled
- Remote Control: Yes
- Operating Temperature: -10°C – +50°C
- Low Voltage Alarm: DC 10.5V \pm 0.5V
- Low Voltage Protection: DC 11.0V / 11.9V
- Low Voltage Recovery: DC 11.0V / 11.9V
- High Voltage Protection: DC 15V \pm 0.5V
- USB Output: 5V 2A
- Short Circuit Shutdown: Reverse Polarity (External fuse)
- Switchable Watt & Voltage Display on Front
- Output Cable: Yes, 2m with fitted COMBINED UK & EURO Socket
- **Dimensions:** 340mm (W) x 180mm (D) x 70mm (H)
- **Approvals & Certifications:** CE (EMC), RoHS



PS200211012

1500W Pure Sine Wave 12V Power Inverter 110V

Pure Sine Wave 1500W 110V Power Inverter with fitted Sockets and Remote Control.

Specification:

- Input Voltage: DC-12V
- Output Voltage: 110V AC
- Output Frequency: 50Hz \pm 1%
- Overload Shutdown: YES DC 15V \pm 0.5V
- Over Temperature Protection: <75 degrees
- Output Power: 1500W
- Peak Power: 3000W
- Max Constant Power Start: 2000W for 10 seconds
- No Load Consumption: <0.5A
- Efficiency: 90% (Full Loading) / 95% (1/3 Loading)
- Converting Max Efficiency: 90% (full loading) / 95% (1/3 loading)
- Radiator Fan: YES Temperature controlled
- Remote Control: Yes
- Operating Temperature: -10°C – +50°C
- RH Non-Condensing
- Low Voltage Alarm: DC 10.5V \pm 0.5V
- Low Voltage Protection: DC 11.0V / 11.9V
- Low Voltage Recovery: DC 11.0V / 11.9V
- High Voltage Protection: DC 15V \pm 0.5V
- USB Output: 5V 2A
- Short Circuit Shutdown: Reverse Polarity (External fuse)
- Switchable Watt & Voltage Display on Front
- Fitted Socket: 2 x 110V Panel Mounted Sockets
- **Dimensions:** 410mm (W) x 220mm (D) x 90mm (H)
- **Approvals & Certifications:** CE (EMC), RoHS



PURE SINE WAVE POWER INVERTERS

2000W Pure Sine Wave 12V Power Inverter

Pure Sine Wave 2000W 12V Power Inverter with 2 x 200~240VAC UK / EURO Sockets and Remote Control.

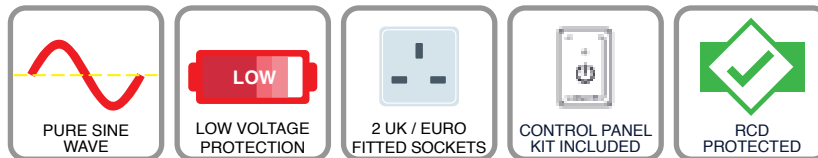
Specification:

- Input Voltage: 12V DC
- Output Voltage: 200 ~ 240V AC
- Output Frequency: 50Hz \pm 1%
- Output Wave Form: Pure Sine Wave (THD < 3%)
- Converting Max. Efficiency: 90% (Full Loading) / 95% (1/3 Loading) •
- No Load Consumption: < 0.5A
- The USB Output: 5V 2A
- Output Power: 2000W - Peak Power: 4000W
- Max Constant Power Start: 2400W for 10 seconds
- Efficiency: 90% (Full Loading) / 95% (1/3 Loading)
- Low Voltage Alarm: DC 10.5V \pm 0.5V
- Low Voltage Protection: DC 11.0V / 11.9V

- Low Voltage Recovery: DC 11.0V / 11.9V
- High Voltage Protection: DC 15V \pm 0.5V
- Short Circuit Shutdown: Reverse Polarity (External Fuse)
- Over Temperature Protection: YES Temperature >75°C
- Overload Shutdown: YES DC 15V \pm 0.5V •
- Radiator Fan: YES, Temperature Controlled
- Remote Control: YES
- Operating Temperature: -10°C +50°C
- Working Humidity: 20% 90% RH Non-Condensing
- Fitted Socket: 2 x UK / EURO Sockets
- **Dimensions:** 380mm (W) x 220mm (D) x 90mm (H)
- **Approvals & Certifications:** CE (EMC), RoHS



PS2003-2K



2000W Pure Sine Wave 24V Power Inverter

Pure Sine Wave 2000W 24V Power Inverter with 2 x 200~240V AC UK /EURO Sockets and Remote Control.

Specification:

- Input Voltage: 24V DC
- Output Voltage: 200 ~ 240V AC
- Output Frequency: 50Hz \pm 1%
- Output Wave Form: Pure Sine Wave (THD <3%)
- Converting Max. Efficiency: 90% (Full Loading) / 95% (1/3 Loading)
- No Load Consumption: < 0.7A
- USB Output: 5V 2.1A
- Output Power: 2000W - Peak Power: 4000W
- Max Constant Power Start: 2400W for 10 seconds
- Low Voltage Alarm: DC 21.0V \pm 1V
- Low Voltage Protection: DC 20.0V \pm 1V
- High Voltage Protection: DC 30V \pm 1V
- Short Circuit Shutdown: Reverse Polarity (External Fuse)

- Over Temperature Protection: YES Temperature >75°C
- Overload Shutdown: YES DC 30V \pm 1V
- Radiator Fan: YES, Temperature Controlled
- Cooling fan auto run: \geq 45°C
- Remote Control: YES
- Operating Temperature: -10°C + 50°C
- Storage Temperature Range: 30°C ~ +70°C
- Working Humidity: 20% ~ 90% RH Non-Condensing
- Fitted Socket: 2 x UK / EURO Sockets
- **Dimensions:** 380mm (W) x 220mm (D) x 90mm (H)
- **Approvals & Certifications:** CE (EMC), RoHS, CE-LVD



PS2003-2K-24V



PURE SINE WAVE POWER INVERTERS



PS2004-3K

3000W Pure Sine Wave 12V Power Inverter

Pure Sine Wave 3000W Power Inverter with 2 x UK / EURO Sockets and Remote Control.

Specification:

- Input Voltage: 12V DC
- Output Voltage: 200 ~ 240V AC
- Output Frequency: 50Hz ± 1%
- Output Wave Form: Pure Sine Wave (THD < 3%)
- Converting Max. Efficiency: 90% (Full Loading) / 95% (1/3 Loading)
- USB Output: 5V 2A
- Output Power: 3000w - Peak Power: 6000W
- Max Constant Power Start: 3600W for 10 seconds
- Low Voltage Alarm: DC 10.5V± 0.5V
- Low Voltage Protection: DC 11.0V / 11.9V
- High Voltage Protection: DC 15V±0.5V
- Short Circuit Shutdown: Reverse Polarity (External Fuse)
- Over Temperature Protection: YES Temperature >75°C
- Overload Shutdown: YES 3600w > 10 sec
- Radiator Fan: YES, Temperature Controlled
- Operating Temperature: -10°C ~ +50°C
- Overload Protection Shutdown
- Power Consumption: <0.9A
- Remote Control: YES
- Fitted Socket: 2 x UK / EURO Sockets

Dimensions:
480mm (W) x 220mm (D) x 90mm (H)

Approvals & Certifications:
CE (EMC), RoHS



PS2004-3K-24V

3000W Pure Sine Wave 24V Power Inverter

Pure Sine Wave 3000W Power Inverter with 2 x combined UK / EURO Sockets and Remote Control.

Specification:

- Input Voltage: 24V DC
- Output Voltage: 200 ~ 240V AC
- Output Frequency: 50Hz ± 1%
- Output Wave Form: Pure Sine Wave (THD < 3%)
- Converting Max. Efficiency: 90% (Full Loading) / 95% (1/3 Loading)
- USB Output: 5V 2A
- Output Power: 3000w - Peak Power: 6000W
- Max Constant Power Start: 3600W for 10 seconds
- Low Voltage Alarm: DC 22.0V± 0.5V
- Low Voltage Protection: DC 19.0V / 21.0V
- High Voltage Protection: DC 29.0V ± 0.5V
- Short Circuit Shutdown: Reverse Polarity (External Fuse)
- Over Temperature Protection: YES Temperature >75°C
- Overload Shutdown: YES 3600w > 10 sec
- Radiator Fan: YES, Temperature Controlled
- Operating Temperature: -10°C ~ +50°C
- Remote Control: YES
- Fitted Socket: 2 x UK / EURO Sockets

Dimensions:
480mm (W) x 220mm (D) x 90mm (H)

Approvals & Certifications:
CE (EMC), RoHS



40A & 60A Solid State Battery Guards

The PowerTector Battery Guard is a solid state battery device that will monitor the source voltage and disconnect the equipment from the battery if the voltage falls below a pre-determined level.

Specification:

- Input Voltage Range: 9 ~ 32V DC (Automatic Referencing)
- Output Voltage: Equal to Input Voltage when operating (maximum of 100mV drop across terminals)
- Transient Over Current Rating (% of continuous value):
 - 110% for 10s
 - 200% for 1s
 - 300% for <0.5ms(On over current shutdown there is a retry every 30s)
- Operating Temperature: -25°C to +60°C to meet this specification table
- Storage Temperature: -25°C to +100°C
- Ingress Protection: IP65
- Programming Lead with 2.8mm Blade Connector Provided
- Output Indicator Green LED for Programming & Output Indication
- Mounting Method: PT10 / 20 Tie Wrap to Wiring (supplied)
PT40/60/100/200 3 of 1/2" No. 8 pozi pan head screws (supplied)
- Safe Area Protection:

Over Current: Limited by Current Sensing Circuit

Over Heat: Limited by Temperature Sensing Circuit

Transients: Protected by Filters & Rugged Component Selection

Catastrophic Protection: Set by External Input Fuse

(set by application demands) and Ground Line Fuse Max 1A



PSBATG40AMP



PSBATG60AMP

140A 12V Split Charge (VSR) Relay

140A 12V Split Charge (VSR) Relay

- ✓ Bi-Directional, Zero Loss Split Charging
- ✓ Fully Automatic Operation
- ✓ Connected LED Indicator
- ✓ Ignition Protected

Specification:

Cable:

- 1 x 6000mm RED 110 Amp Rated Heavy Duty Extra Flexible Battery Cable Pre-Assembled Heavy Duty Wiring Harness. (Midi Fuse Holder 100 Amp Fuses) Fitted Eyelet / Battery Connection
- 1 x 1100mm RED 110 Amp Rated Heavy Duty Extra Flexible Battery Cable Pre-Assembled Heavy Duty Wiring Harness (midi Fuse Holder 100 Amp Fuses) Fitted Eyelet Connection
- 1 x 1000mm Cable For Negative Fitted Eyelet / Battery Connection Fitted Socket:
1 x UK Socket

Relay: (The EC-REL140VS Relay can also be purchased separately)

- Relay Dimensions: 65mm x 65mm x 53mm
- Relay Connections:- 2 x 6mm studs for Power In and Out.
- Epoxy Sealed
- On Trigger Voltage: 13.3V DC
- Off Trigger Voltage: 12.8V DC
- 1 x 1000mm Cable for Negative

PLEASE NOTE: The Relay is rated at 140A Cable, 110A continuous. 165A short load fuses in split charge are rated at 100A and will blow at 150A



ECR140KIT



EC-REL140VS



BATTERY CHARGING SYSTEMS



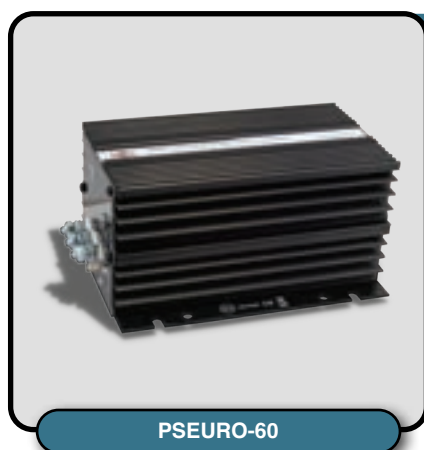
30A 12V Euro 5 & Euro 6 Engine Leisure Charging System

30A 12V Euro 5 & Euro 6 Engine Leisure Battery Charging System.

- ✓ Stop / Start Systems
- ✓ Used for Smart Alternator Charging Systems & Vehicles with Regenerative Braking, (**Mercedes Blue** Efficiency Vehicles, **VW Blue Motion** Vehicles, **Ford ECONetic** Vehicles, **Vauxhall ECOFlex** Vehicles to name a few).

Specification:

- Input Voltage: 12V Nominal (9 ~ 32v)
- Output Voltage: 12V
- Output Load Current: 30A Max
- No Load Input Current: 2mA @ 12V Input
- Protection: Overload & Over Temperature Protection with Fully Automatic Reset
- Isolation: Non-Isolated
- Operating Temperature: Maximum 70°C / Minimum -30°C
- Size & Weight: 180mm (L), 46mm (H), 124mm (W), 700g
- Suitable for: Most Lead Acid, Gel, AGM Batteries
- Fanless Cooling for Zero Noise
- Approvals & Certifications: E11, CE



60A 12V Euro 5 & Euro 6 Engine Leisure Charging System

60A 12V Euro 5 & Euro 6 Engine Leisure Battery Charging System.

- ✓ Stop / Start Systems
- ✓ Used for Smart Alternator Charging Systems & Vehicles with Regenerative Braking, (**Mercedes Blue** Efficiency Vehicles, **VW Blue Motion** Vehicles, **Ford ECONetic** Vehicles, **Vauxhall ECOFlex** Vehicles to name a few).

Specification:

- Input Voltage: 12V Nominal (9 ~ 32v)
- Output Voltage: 12V
- Output Load Current: 60A Max
- No Load Input Current: 2mA @ 12V Input
- Protection: Overload & Over Temperature Protection with Fully Automatic Reset
- Isolation: Non-Isolated
- Operating Temperature: Maximum 70°C / Minimum -30°C
- Size & Weight: 180mm (L), 92mm (H), 124mm (W), 1486g
- Suitable for: Most Lead Acid, Gel, AGM Batteries
- Fanless Cooling for Zero Noise
- Approvals & Certifications: E11, CE



ELECTRIC HYBRID BATTERY CHARGING SYSTEMS

30A 12V DC Electric Vehicle B2B Charging System

60A automotive 12v DC Battery to Battery Charging System has been specifically designed for full Electric and Electric Hybrid Vehicles.

Specification:

- Input Voltage: 12V Nominal (9 ~ 32v)
- Output Voltage: 12V
- Output Load Current: 30A Max
- No Load Input Current: 2mA @ 12V Input
- Protection: Output Overload & Over Temperature Protection with Fully Automatic Reset
- Isolation: Non-Isolated
- Operating Temperature: Maximum 70°C / Minimum -30°C
- Size & Weight: 200mm (L), 46mm (H), 124mm (W), 700g

- **Approvals & Certifications:** E11, CE



PSEURO30



30A 12V Camper Intelligent Trickle Charger

The PSCAMPEREURO30 12 Volt DC 30 Amp Battery to Battery Charger is designed and manufactured in the UK, specifically for Leisure Vehicles allowing for optimised and controlled three stages, DC charging of a Lead Acid Leisure Vehicle Auxiliary Battery's from a Vehicle Starting Battery & Vehicle Alternator.

Specification:

- Input Voltage: 12V
- Vehicle Ignition Controlled ON / OFF
- Euro 5 & Euro 6 Vehicles
- Operating Temperature: Maximum 70°C / Minimum -30°C
- Size & Weight: 200mm (L), 46mm (H), 124mm (W), 700g

- **Approvals & Certifications:** E11, CE



PSCAMPEREURO30





60A 12V Camper Intelligent Trickle Charger

The PSCAMPEREURO60 12 Volt DC 60 Amp Battery to Battery Charger is designed and manufactured in the UK, specifically for Leisure Vehicles allowing for optimised and controlled three stages, DC charging of a Lead Acid Leisure Vehicle Auxiliary Battery's from a Vehicle Starting Battery & Vehicle Alternator.

Specification:

- Input Voltage: 12V
- Vehicle Ignition Controlled ON / OFF
- Euro 5 & Euro 6 Vehicles
- Operating Temperature: Maximum 70°C / Minimum -30°C
- Size & Weight: 200mm (L), 46mm (H), 124mm (W), 700g

- Approvals & Certifications: E11, CE



Euro Charger Bluetooth Adaptor

The PSEUROBT is a bluetooth module that allows the status of our Power Inverters and B2B Chargers to be displayed using a mobile phone and the Ablemail Device Manager App. The unit is designed to consume low current in standby mode so as not to drain the vehicle or leisure battery.

As well as being a battery status indicator the PSEUROBT allows the user to adjust and configure parameters on their products such as changing battery types from AGM or Lithium, which is particularly useful for DC battery chargers and trickle.

- Approvals & Certifications: E11, CE



Electric Vehicle DC / Mains Charging Sensor

This works on electric vehicles to sense that the vehicle is being charged at a charging point. The output of the positive or negative can be used to trigger preferential / stationary only charging of the auxiliary battery or as a signal for vehicle telematics. It detects that the vehicle is connect to a charging station.

Specification:

- Input Voltage: 12V Nominal (9 ~ 32v)
- Output Load Current: 1A Max
- No Load Input Current: 2mA @ 12V Input
- Protection: Output Overload & Over Temperature Protection with Fully Automatic Reset
- Isolation: Fully Isolated from HV Charging AC or DC Supply
- Operating Temperature: Maximum 70°C / Minimum -30°C
- Cable Length: 1,000mm unir 95mm (L), 15mm (H), 30mm (W)
- Weight: 70g

- Approvals & Certifications: E11, CE





BLUETOOTH ELECTRIC AIR HEATER KIT

The PSHEAT600 is an Electric heating unit that is capable of rapid heating then maintaining the internal temperature of the vehicle without the drawbacks of a Diesel Heater. It has 3 elements to bring the temperature up rapidly then will switch to 1 element to maintain the target temperature as much as possible Settings can adjusted or set via Bluetooth and Dedicated IOS or Android app.

Bluetooth Electric Air Heater Kit

Specification:

- Heat Output: 200W / 400W / 600W Max
- Air Nozzle Size: 2x Ø 50mm
- Airflow: 187 m³ / hr
- PTC Heating Elements: 3 of
- Nominal Heat Output Temperature: 45°C
- Max Output Operating Temperature: 50°C
- Controlled Safety Cutoff:
52°C off reset on below 30°C
- Mechanical Safety Cutoff: 110°C
- Cool / Recirculate Fan: 24W Max Inrush

Addition Specification:

- Weight: 2.3kg
- Fan life: 70,000 Hrs @ 40°C
- Noise: 55dB (A)
- Voltage: 10.5V ~ 15.5V 12V DC

- Nominal Battery Guard Default Setting (internal): 10.5V
- Current Max: 52A Continuous; 70A inrush
- Current (In Sleep Mode): <6mA
- External Fusing (Internal Fan) + Aux Fan:
5Amp Standard Blade On Board LED Fuse Blown Indicator
- External Fusing (PTC Heaters): 25Amp Standard Blade On Board LED Fuse Blown Indicator

• Dimensions:

155mm (L) x 150mm (W) x 200mm (H)



PSHEAT600





FLASHING LIGHTS

- 1 2FT to 6FT LED Clear Lens Light Bar
- 12 Strobe Lights



CAMERA MONITOR SYSTEM

- 2 5", 7", 9" Dashboard Monitor
- 4 Nearside Blind Spot Camera
- 7 Reverse Camera



WARNING ALARM

- 3 Audible Left Turn Alarm
- 9 Reverse Alarm
- 11 Handbrake Alarm



BLIND SPOT DETECTION

- 6 4 Sensor Side Detection Kit
- 5 Blind Spot Stickers - A4 Landscape / Portrait
- 8 Blind Spot Stickers - A4 Landscape / Portrait
- 10 Pedestrian Detection Camera

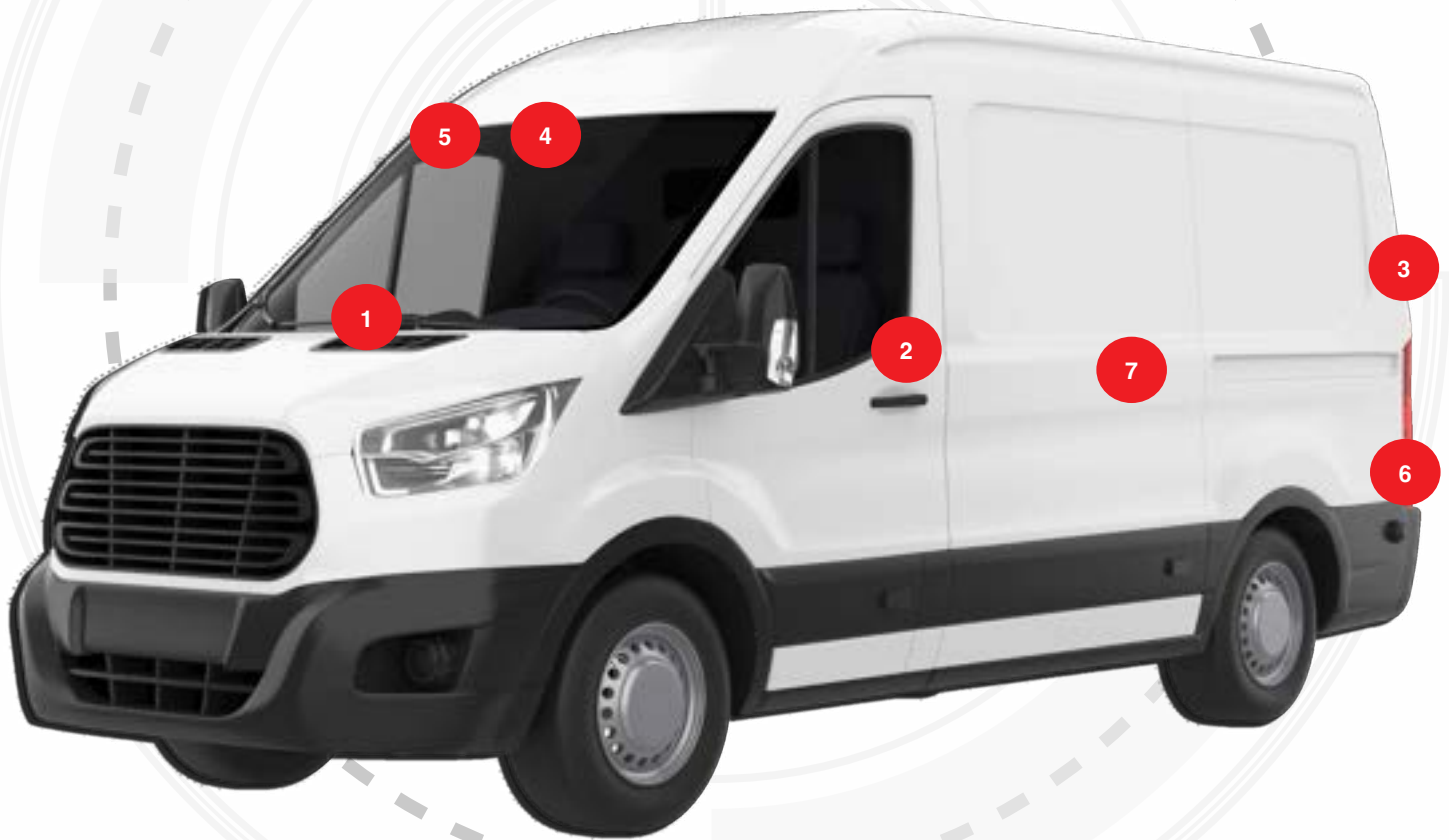


CAMERA MONITOR SYSTEM

- 1 5", 7", 9" Dashboard Monitor
- 2 Nearside Blind Spot Camera
- 3 Brake Light Camera

IROADUK DASH CAMERA

- 4 IROADUK Dash Camera
- 5 4G Dash Camera



POWER MANAGEMENT

- 7 3000W Pure Sine Wave Power Inverter 24V

BLIND SPOT DETECTION

- 6 4 Sensor Side Detection Kit

CAMERA MONITOR SYSTEM

- 2 5", 7", 9" Dashboard Monitor
- 4 Nearside Blind Spot Camera
- 7 Reverse Camera

FLASHING LIGHTS

- 1 2FT to 6FT LED Clear Lens Light Bar
- 12 Strobe Lights



WARNING ALARM

- 3 Audible Left Turn Alarm
- 9 Reverse Alarm
- 11 Handbrake Alarm

BLIND SPOT DETECTION

- 6 4 Sensor Side Detection Kit
- 5 Blind Spot Stickers - A4 Landscape / Portrait
- 8 Blind Spot Stickers - A4 Landscape / Portrait
- 10 Pedestrian Detection Camera

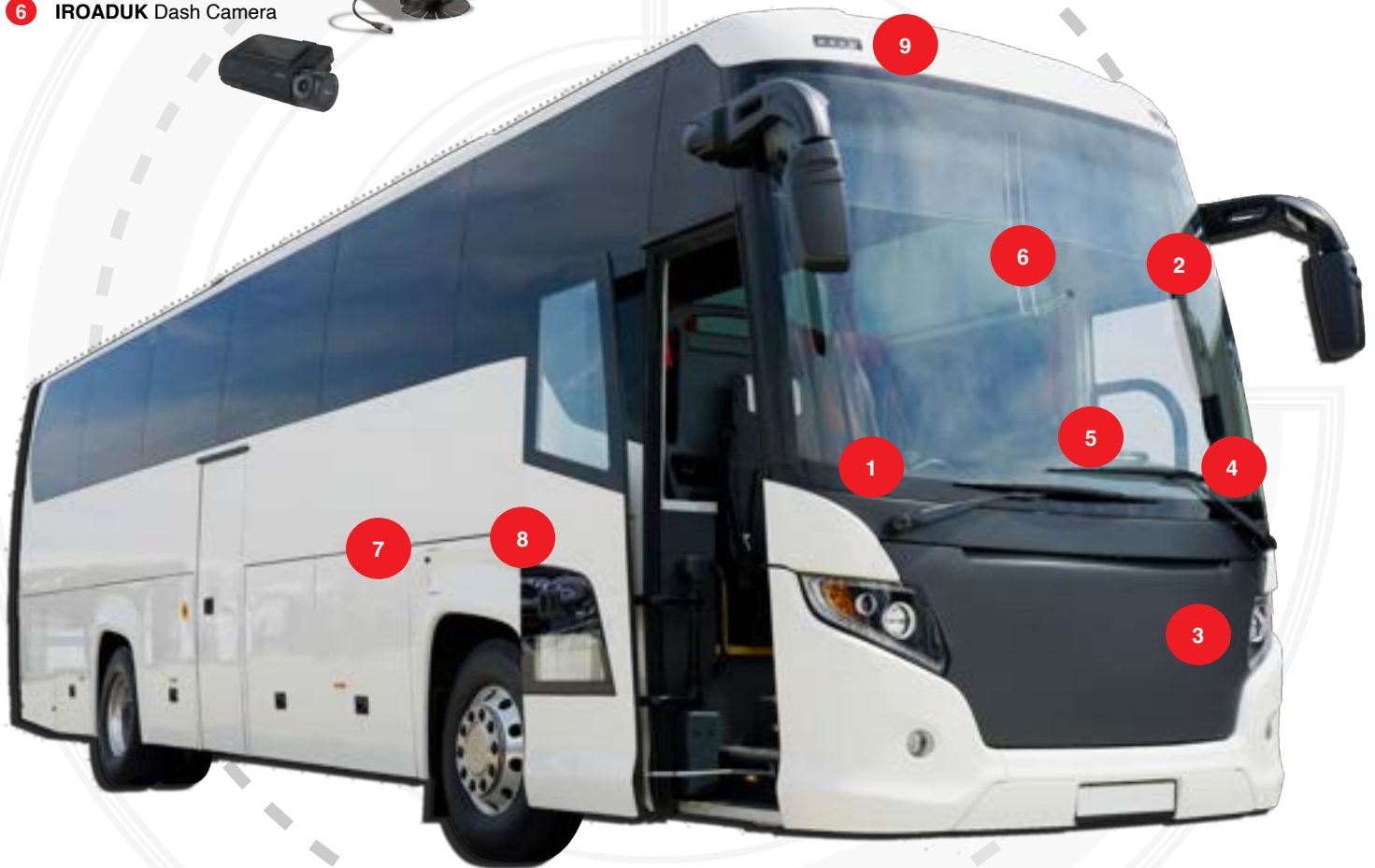
CAMERA MONITOR SYSTEM

- 2 Internal Dome Camera
- 3 Front Camera
- 4 4G Dash Camera
- 5 5", 7", 9" Dashboard Monitor
- 6 IROADUK Dash Camera



RECORDING

- 1 8 Channel MDVR



POWER MANAGEMENT

- 7 3000W Pure Sine Wave Power Inverter 24V



WARNING ALARM

- 8 Audible Alarm



TELEMATICS

- 9 GPS Telematics devices



ON DEMAND APP


- 10 Vehicle Check App






AFTERSALES & WARRANTIES

When operating a fleet of any size, we understand that you're bound to encounter issues from time to time. That's why Parksafe Group are able to provide manufacturer warranties on our most popular products and solutions.

ONE YEAR:

Products Contents:	Tab Colour Code
Parksafe On Demand - DVR Accessories	
Parksafe On Demand - Telematics Trackers & Accessories	
Memory SSD, HDD & SD cards	
Electric Vehicle Products & Accessories	

TWO YEARS:

Products Contents:	Tab Colour Code
Audible Alarms	
360 Birds Eye View Camera System	
Camera's - Commercial & Universal Cameras	
Monitors - Dashboard & Mirror Monitors	
Camera & Monitor Kits, Camera Interfaces & Accessories	
IROADUK Dash Cameras & Accessories	
Power Inverters & Battery Chargers	


THREE YEARS:

Products Contents:	Tab Colour Code
Parksafe On Demand - DVR's	
Sensor Detection Kits	
Parking Sensor Kits & Accessories	
Vehicle Lighting - Interior, Warning, Work Lights & Light Bars	
Camera's - Brake Light Cameras	

In order to return goods, we kindly request that you email: technical@parksafegroup.com to request an RMA form. This is required to be completed fully and included in the package to be returned. Goods being returned to Parksafe Group without the correct documentation may be refused and returned or be delayed in their processing.

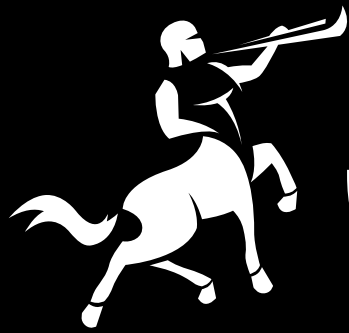


 PARKSAFEGROUP.COM

 01773 746 591

 SALES@PARKSAFEGROUP.COM

Our Warranties are subject to our Terms and Conditions, to view these please visit: www.parksafeautomotive.com/terms-conditions/. **Please note:** At the time of publishing all images and specifications in this catalogue were correct. We have the right to change information at any time without notification so please contact Parksafe Group to ensure the information is still current prior to purchase. Time of publish: September 2023.



albert
Jagger

HEAD OFFICE

Centaur Works,
Green Lane,
Walsall,
West Midlands,
WS2 8HG
United Kingdom

TEL: +44 (0) 1922 471000
EMAIL: sales@albertjagger.co.uk

